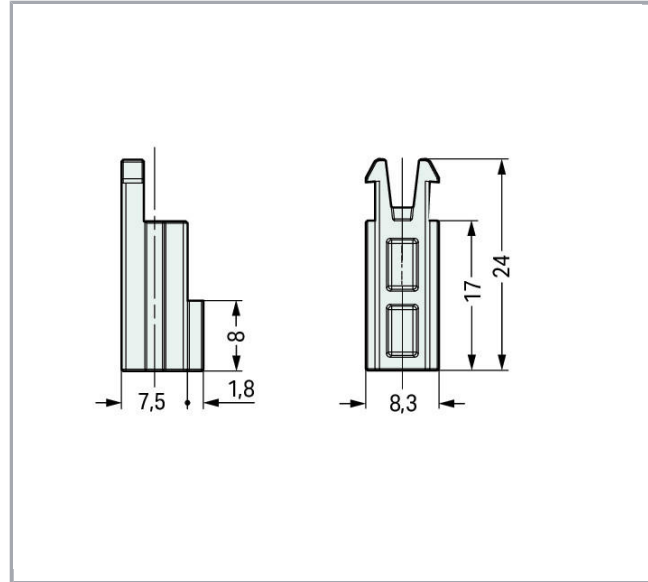
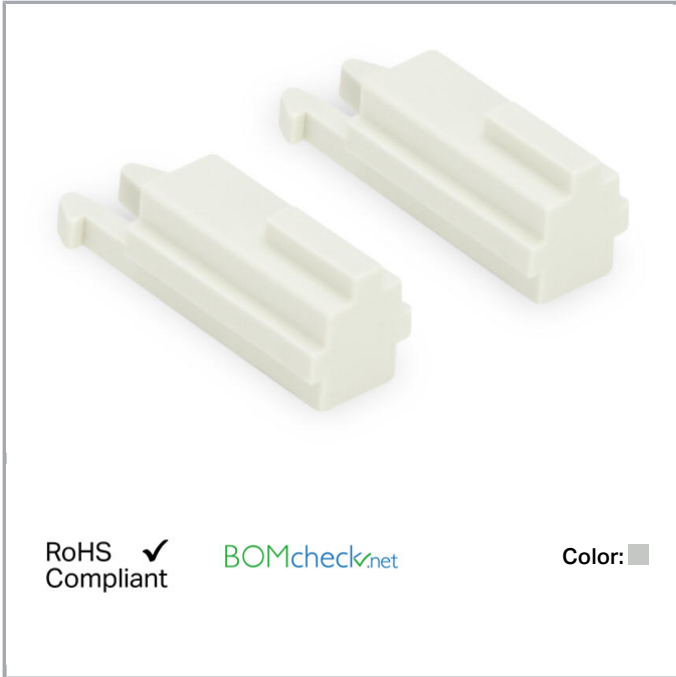


Data sheet | Item number: 831-321

Lockout pin; 2 parts; light gray

www.wago.com/831-321



Data

Electrical data

Ratings per IEC/EN 60664-1

Legend (ratings)

(III / 2) ≙ Overvoltage category III / Pollution degree 2

Approvals per UL 1059

Approvals per

UL 1059

Connection data

Number of connection types

1

Geometrical Data

Width

8.3 mm / 0.327 inch

Height

9.3 mm / 0.366 inch

Subject to changes. Please also observe the further product documentation!

WAGO Kontakttechnik GmbH & Co. KG
Hansastr. 27
32423 Minden
Phone: +49571 887-0 | Fax: +49571 887-169
Email: info.de@wago.com | Web: www.wago.com

Do you have any questions about our products?
We are always happy to take your call at +49 (571) 887-44222.



Depth	24 mm / 0.945 inch
-------	--------------------

Mechanical data

Mounting type	Snap-in
Type of mounting	Feed-through mounting

Material Data

Color	light gray
Weight	0.8 g

Commercial data

Packaging type	BOX
Country of origin	DE
GTIN	4055143564939
Customs Tariff No.	39269097900

Counterpart

Downloads

Documentation

Additional Information

Technical explanations	Apr 3, 2019	pdf 3.6 MB	Download
------------------------	-------------	---------------	----------

CAD/CAE-Data

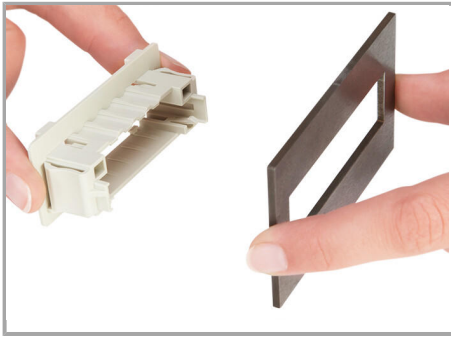
CAD data

2D/3D Models 831-321	URL	Download
----------------------	-----	----------

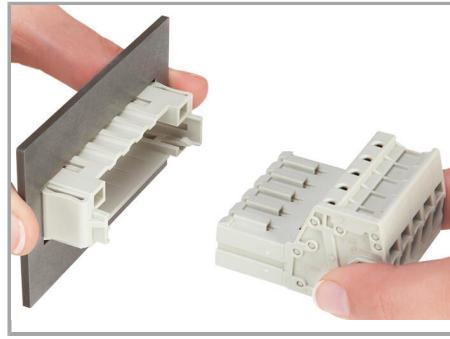
Installation Notes

Assembly

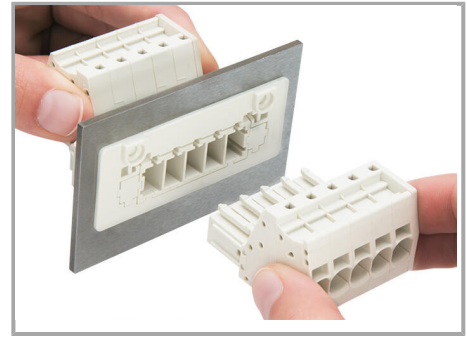
Subject to changes. Please also observe the further product documentation!



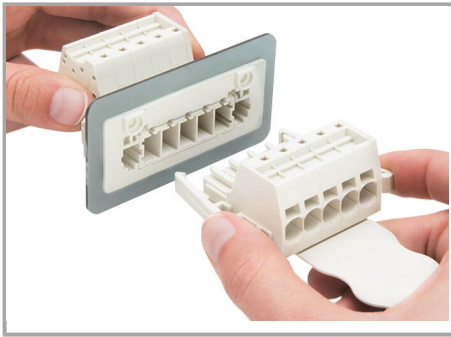
Insert the snap-in frame into the cutout.



Insert the male connector into the snap-in frame.



Inserting a female connector with 1 out lateral locking levers -lockout pins are inserted on both sides of the snap-in frame.



Inserting a female connector equipped with lateral locking levers.

Subject to changes. Please also observe the further product documentation!