

Data sheet | Item number: 772-264/060-000

Supply module; 5 x 2.5 mm² + 2 x 1.5 mm²; 5-pole; Cod. B; with strain relief housing; 4,00 mm²; gray

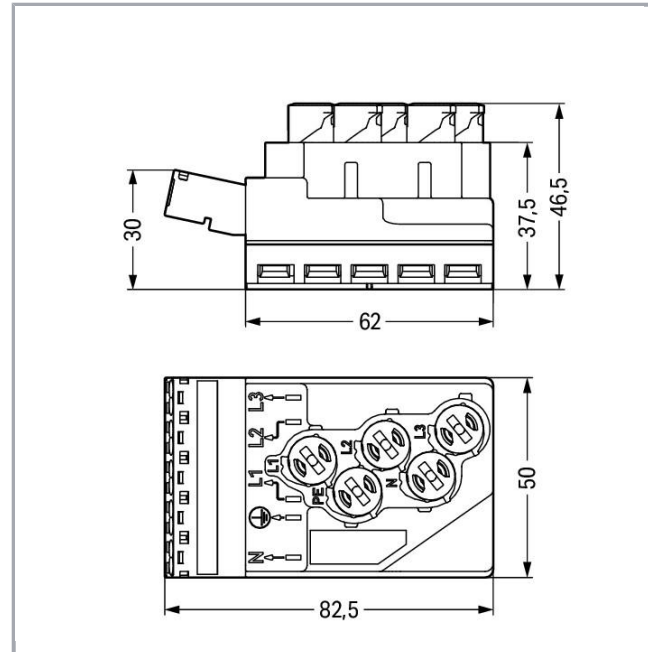
www.wago.com/772-264/060-000



RoHS
Compliant ✓

BOMcheck.net

Color: ■



Item description

- Suitable for bus and power lines or for bus and power combined in one cable
- Easy installation without line interruption due to convenient insulation displacement technology (IDC)
- WINSTA® IDC Supply and Tap-Off Modules allow connection at any location of the flat cable – one rotation per pole is all that is required

Note on mismatching protection:

All WINSTA® components are 100% protected against mismatching when:

- a.) plugging different numbers of poles
- b.) plugging while rotated 180
- c.) plugging while laterally staggered
- d.) plugging one pole

Subject to changes. Please also observe the further product documentation!

WAGO Kontakttechnik GmbH & Co. KG
Hansastr. 27
32423 Minden
Phone: +49571 887-0 | Fax: +49571 887-169
Email: info.de@wago.com | Web: www.wago.com

Do you have any questions about our products?
We are always happy to take your call at +49 (571) 887-44222.



Data

Electrical data

Note on Contact Resistance	approx. 1 mΩ of contact resistance approx. 0.25 mΩ contact transition plug/socket
----------------------------	---

Ratings per IEC/EN 60664-1

Ratings per	IEC/EN 60664-1
Rated voltage (III / 3)	400 V
Rated impulse voltage (III / 3)	6 kV
Rated current	25 A
Legend (ratings)	(III / 3) ≙ Overvoltage category III / Pollution degree 3

Connection data

Connection technology	Push-in CAGE CLAMP®
Actuation type	Operating tool Push-in
Nominal cross section	4 mm ²
Solid conductor	0,5 ... 4 mm ² / 20 ... 12 AWG
Solid conductor, push-in termination	1,5 ... 4 mm ² / 16 ... 12 AWG
Stranded conductor	0,5 ... 2,5 mm ² / 20 ... 14 AWG
Fine-stranded conductor	0,5 ... 4 mm ² / 20 ... 12 AWG
Fine-stranded conductor with ferrule with plastic collar	0,25 ... 1,5 mm ² / 20 ... 16 AWG
Fine-stranded conductor with ferrule without plastic collar	0,25 ... 2,5 mm ² / 20 ... 14 AWG
Fine-stranded conductor with ferrule, push-in termination, from	1,5 mm ² / 16 AWG
Strip length	9 mm / 0.35 inch
No. of poles	5
Connection technology 2	IDC
Total number of connection points	10
Total number of potentials	5

Geometrical Data

Width	50 mm / 1.969 inch
Height	46,5 mm / 1.831 inch
Depth	82,5 mm / 3.248 inch

Subject to changes. Please also observe the further product documentation!

WAGO Kontakttechnik GmbH & Co. KG
 Hansastr. 27
 32423 Minden
 Phone: +49571 887-0 | Fax: +49571 887-169
 Email: info.de@wago.com | Web: www.wago.com

Do you have any questions about our products?
 We are always happy to take your call at +49 (571) 887-44222.



Mechanical data

Mating force of a plug-in connection	approx. 30 ... 70 N (depending on pole number)
Retention force of a plug-in connection	When locked: > 80 N
Unmating force of a plug-in connection	when unlocked: approx. 15 ... 20 N
Number of mating cycles	200, without resistive load 100, with resistive load $I_N = 25$ A, tested (4 mm ² /AWG 12)
Marking	N L1 L2 L3
Protection class	IP20
Note on protection class	Only when mated (these compact connectors are not designed for use in open, easily accessible areas).
Potential marking	N L1 L2 L3
Suitable	for flat cable 5 x 2.5 mm ² , 5 x 4 mm ² , 5 x 2.5 mm ² + 2 x 1.5 mm ²

Plug connection

Mismating protection	Yes
Locking of plug-in connection	locking lever

Material Data

Color	gray
Insulating material	Polyamide 66 (PA 66)
Contact material	Copper or copper alloy (surface-treated)
Fire load	2.221 MJ
Weight	95 g

Environmental Requirements

Processing temperature	-5 ... +40 °C
Continuous operating temperature	-35 ... +85 °C
Note on Continuous Service Temperature	PVC cable for temperatures ≤ 70 °C (including halogen-free) PVC flat cable for temperatures -15 °C to ≤ 70 °C (including halogen-free) Insulating parts for temperatures ≤ 105 °C

Commercial data

Packaging type	BOX
Country of origin	DE
GTIN	4050821585770
Customs Tariff No.	85366990990

Subject to changes. Please also observe the further product documentation!


WAGO Kontakttechnik GmbH & Co. KG
 Hansastr. 27
 32423 Minden
 Phone: +49571 887-0 | Fax: +49571 887-169
 Email: info.de@wago.com | Web: www.wago.com

Do you have any questions about our products?
 We are always happy to take your call at +49 (571) 887-44222.

Counterpart

Compatible products

assembling

	Item no.: 772-260 Mounting plate; for power supply and tap-off modules; Plastic; black	www.wago.com/772-260
---	--	--

tools



Item no.: 210-635 Operating tool; Blade: 6.5 x 1.2 mm	www.wago.com/210-635
---	--



Item no.: 210-636 Operating tool; Blade: 6.5 x 1.2 mm; with a partially insulated shaft	www.wago.com/210-636
---	--

Item no.: 210-720 Operating tool; Blade: 3.5 x 0.5 mm; with a partially insulated shaft	www.wago.com/210-720
---	--

wiring and connectors



Item no.: 897-251 pre-assembled flat cable; Eca; 5G 2.5 mm ² ; PVC; 3L + N + PE; 0.6/1 kV; 2,50 mm ² ; acid green	www.wago.com/897-251
---	--



Item no.: 897-252 pre-assembled flat cable; B2ca; 5G 2.5 mm ² ; halogen-free; 3L + N + PE; 0.6/1 kV; 2,50 mm ² ; acid green	www.wago.com/897-252
---	--



Item no.: 897-261 Flat cable; 5G 2.5 mm ² + 2 x 1.5 mm ² ; PVC; 3L + N + PE + 2 buses; 0.6/1 kV; 2,50 mm ² ; violet	www.wago.com/897-261
--	--



Item no.: 897-262 Flat cable; 5G 2.5 mm ² + 2 x 1.5 mm ² ; halogen-free; 3L + N + PE + 2 buses; 0.6/1 kV; 2,50 mm ² ; violet	www.wago.com/897-262
---	--



Item no.: 897-453 Flat cable; 5G 4 mm ² ; halogen-free; 3L + N + PE; 0.6/1 kV; 4,00 mm ² ; black	www.wago.com/897-453
--	--

Downloads

CAD/CAE-Data

CAE data

WSCAD Universe 772-264/060-000	URL	Download

Installation Notes

Conductor termination

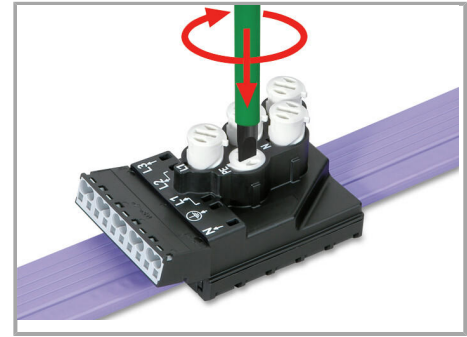
Subject to changes. Please also observe the further product documentation!



Insert flat cable into base (observe coding!).

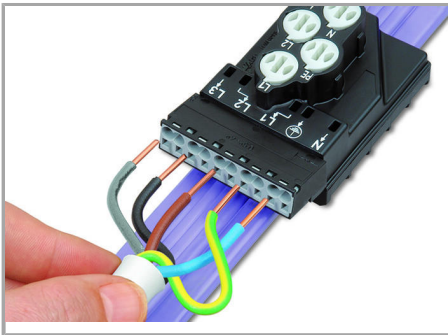


Mount IDC module flush with the base.



Screw down contact elements until element stops.

Should the IDC module jam during mounting, turn the upper part by 180° and remount it.



Connecting an installation cable to the supply module:



Secure supply cable via strain relief housing.

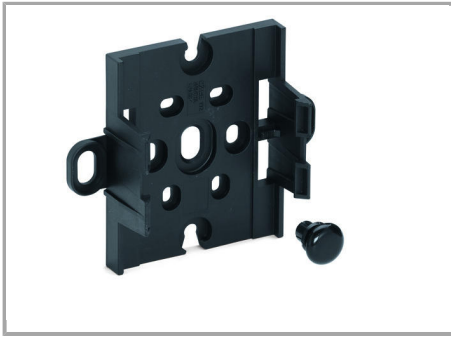


Tighten strain relief screw using a screwdriver.

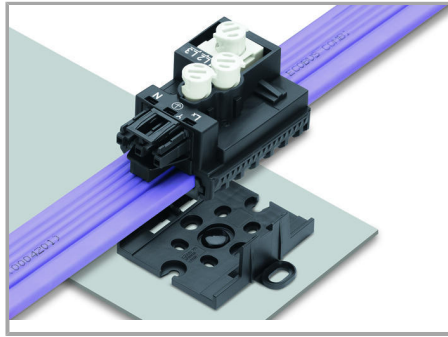
Simply push stripped, solid conductors into unit. Open clamp via screwdriver to insert stripped, fine-stranded conductors.

Installation

Subject to changes. Please also observe the further product documentation!



The mounting plate can be centrally mounted, or attached via outboard attachment points using 770-601 Mounting Pins.



Snapping a supply or tap-off module onto a mounting plate.

Safety



After removing the module, the contact holes in the flat cable must be sealed using insulating tape.

Product family

WINSTA® IDC

[Show all products from the family](#)

Subject to changes. Please also observe the further product documentation!