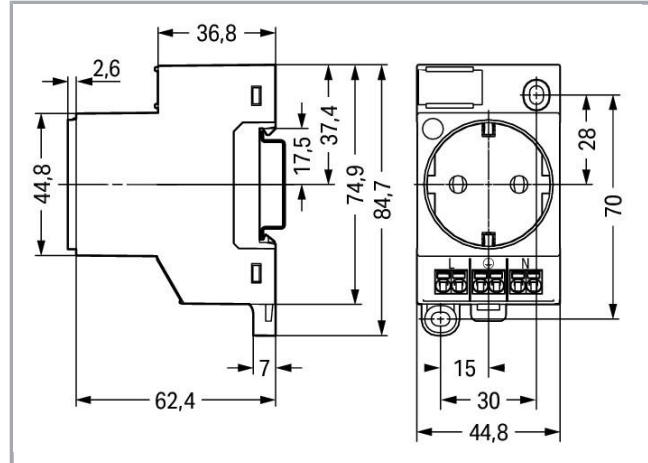


Data sheet | Item number: 709-581

Switchgear cabinet outlet; for DIN-rail and screw mounting; for plug, type F, CEE 7/4 (Schuko); common in DE, NL, AT; with LED status indicator; with Push-in Cage Clamp double connection; light gray



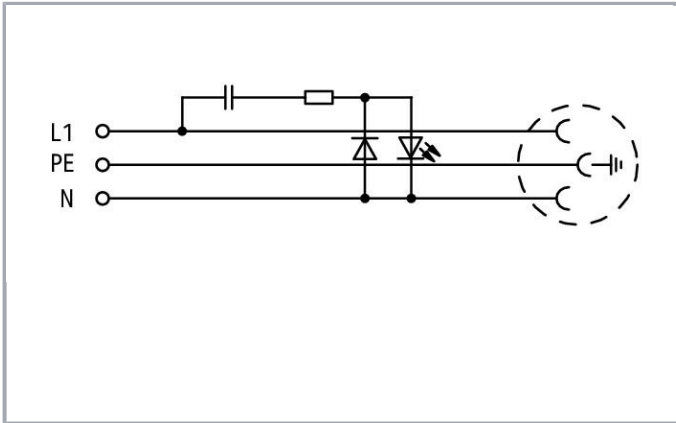
www.wago.com/709-581



Subject to changes. Please also observe the further product documentation!

WAGO Kontakttechnik GmbH & Co. KG
Hansastr. 27
32423 Minden
Phone: +49571 887-0 | Fax: +49571 887-169
Email: info.de@wago.com | Web: www.wago.com

Do you have any questions about our products?
We are always happy to take your call at +49 (571) 887-44222.



Item description

Safety information 1:

Installation must be performed by a qualified electrician.

Safety information 2:

During the insulation resistance test, the active conductors must be connected.

The integrated status indicator in the control cabinet outlet must be protected against transient overvoltages.

Overvoltage protection in low-voltage systems must be observed.

Data

Electrical data

Voltage type (1)	AC
------------------	----

Ratings per IEC/EN 60664-1

Ratings per	DIN VDE 0620-1
Rated voltage (III / 3)	250 V
Rated impulse voltage (III / 3)	2 kV
Rated current	16 A

Connection data

Connection type (1)	L, PE, N
Connection technology	Push-in CAGE CLAMP®
Actuation type	Push-in
Actuation direction (1)	Operation parallel to conductor entry
Connectable conductor materials	Copper
Nominal cross section	2,5 mm ²
Solid conductor	0,2 ... 2,5 mm ² / 24 ... 14 AWG

Subject to changes. Please also observe the further product documentation!



Stranded conductor	0,2 ... 2,5 mm ² / 24 ... 14 AWG
Fine-stranded conductor	0,2 ... 2,5 mm ² / 24 ... 14 AWG
Strip length	9 ... 10 mm / 0.35 ... 0.39 inch
No. of poles	3
Number of connection types	3
Number of test slots	2

Geometrical Data

Width	45 mm / 1.772 inch
Height	65 mm / 2.559 inch
Height from the surface	65 mm / 2.559 inch
Height from upper-edge of DIN-35 rail	59,8 mm / 2.354 inch
Depth	84,7 mm / 3.335 inch

Mechanical data

Type of mounting	DIN-35 rail
Protection class	IP20
Potential marking	L N

Material Data

Color	light gray
Material group	I
Insulating material	Polyamide 66 (PA 66)
Flammability class per UL94	V0
Clamping spring material	Chrome nickel spring steel (CrNi)
Contact material	Copper alloy
Contact plating	Sn
Weight	81.6 g

Environmental Requirements

Continuous operating temperature	-35 ... +85 °C
----------------------------------	----------------

Commercial data

Packaging type	BOX
Country of origin	BG
GTIN	4055143721295


Subject to changes. Please also observe the further product documentation!

Customs Tariff No.

85366990990

Approvals / Certificates

Country specific Approvals

Logo	Approval	Additional Approval Text	Certificate name
	VDE VDE Prüf- und Zertifizierungsinstitut	-	40047680 (IEC 60884-1)

Counterpart

Downloads

CAD/CAE-Data

CAD data

2D/3D Models 709-581	URL	Download

CAE data

EPLAN Data Portal 709-581	URL	Download

WSCAD Universe 709-581	URL	Download

Installation Notes



Subject to changes. Please also observe the further product documentation!

WAGO Kontakttechnik GmbH & Co. KG
 Hansastr. 27
 32423 Minden
 Phone: +49571 887-0 | Fax: +49571 887-169
 Email: info.de@wago.com | Web: www.wago.com

Do you have any questions about our products?
 We are always happy to take your call at +49 (571) 887-44222.