

Data sheet | Item number: 284-346

Step-down cover plate; 1 mm thick; for 4-conductor 279-831, 280-833 and 281-652 terminal blocks; orange

www.wago.com/284-346



Data

Geometrical Data

| | |
|--------|----------------------|
| Width | 1 mm / 0.039 inch |
| Height | 26.5 mm / 1.043 inch |
| Depth | 81 mm / 3.189 inch |

Material Data

| | |
|-----------|----------|
| Color | orange |
| Fire load | 0.058 MJ |
| Weight | 1.9 g |

Commercial data

| | |
|--------------------|----------------------------------|
| Product Group | 1 (Rail Mounted Terminal Blocks) |
| Packaging type | BOX |
| Country of origin | CN |
| GTIN | 4017332337342 |
| Customs Tariff No. | 85389099990 |

Counterpart

Subject to changes. Please also observe the further product documentation!

WAGO Kontakttechnik GmbH & Co. KG
Hansastr. 27
32423 Minden
Phone: +49571 887-0 | Fax: +49571 887-169
Email: info.de@wago.com | Web: www.wago.com

Do you have any questions about our products?
We are always happy to take your call at +49 (571) 887-44222.

Downloads

Documentation

Additional Information

Technical explanations

Apr 3, 2019

pdf
2.1 MB

[Download](#)

CAD/CAE-Data

CAD data

2D/3D Models 284-346

[URL](#)

[Download](#)

CAE data

EPLAN Data Portal 284-346

[URL](#)

[Download](#)

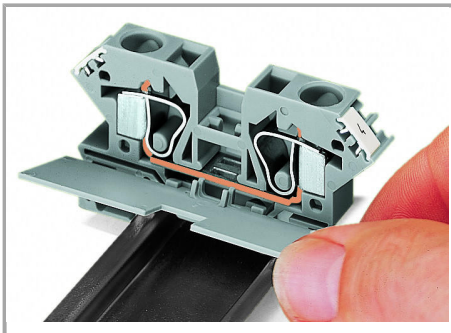
WSCAD Universe 284-346

[URL](#)

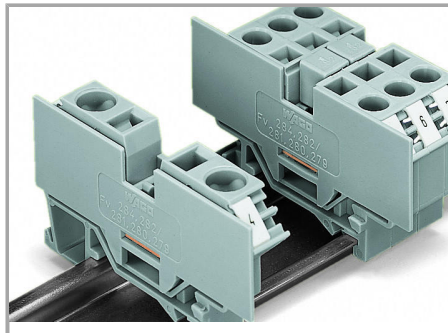
[Download](#)

Installation Notes

Assembly



Snapping cover plate onto open side of terminal block.



A cover plate must also be snapped onto the other side of the larger terminal block.

Subject to changes. Please also observe the further product documentation!