

## Data sheet | Item number: 281-483

Comb-style jumper bar; insulated; 3-way; IN = IN terminal block; gray

[www.wago.com/281-483](http://www.wago.com/281-483)



### Data

#### Geometrical Data

Width	18 mm / 0.709 inch
Depth	5 mm / 0.197 inch

Subject to changes. Please also observe the further product documentation!

WAGO Kontakttechnik GmbH & Co. KG  
Hansastr. 27  
32423 Minden  
Phone: +49571 887-0 | Fax: +49571 887-169  
Email: [info.de@wago.com](mailto:info.de@wago.com) | Web: [www.wago.com](http://www.wago.com)

Do you have any questions about our products?  
We are always happy to take your call at +49 (571) 887-44222.



## Material Data

Color	gray
Fire load	0.014 MJ
Weight	2.5 g

## Commercial data

Packaging type	BOX
Country of origin	DE
GTIN	4044918524254
Customs Tariff No.	85366990990

## Counterpart

## Compatible products

### tools

Item no.: 280-433	<a href="http://www.wago.com/280-433">www.wago.com/280-433</a>
Operating tool; made of insulating material; 3-way	

## Downloads

### Documentation

#### Additional Information

Technical explanations	Apr 3, 2019	pdf 2.1 MB	Download
------------------------	-------------	---------------	----------

## CAD/CAE-Data

### CAD data

2D/3D Models 281-483	URL	Download
----------------------	-----	----------

### CAE data

WSCAD Universe 281-483	URL	Download
------------------------	-----	----------

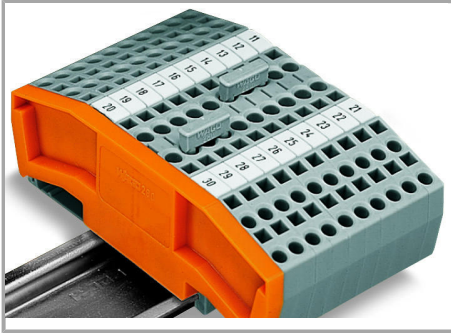
## Installation Notes

Subject to changes. Please also observe the further product documentation!

WAGO Kontakttechnik GmbH & Co. KG  
Hansastr. 27  
32423 Minden  
Phone: +49571 887-0 | Fax: +49571 887-169  
Email: [info.de@wago.com](mailto:info.de@wago.com) | Web: [www.wago.com](http://www.wago.com)

Do you have any questions about our products?  
We are always happy to take your call at +49 (571) 887-44222.

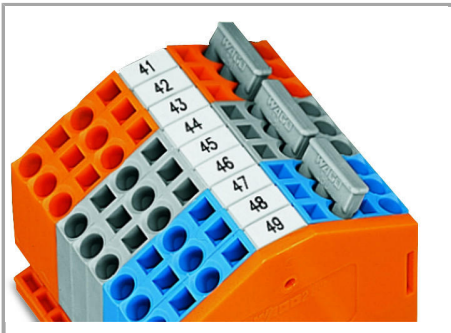
**Jumpered**



Commoning with comb-style jumper bar.

Push comb-style jumper bar down until fully inserted.

**Jumpered**

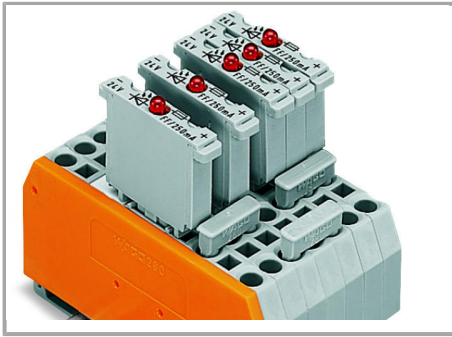


4-conductor through terminal blocks, angled type –

formation of groups with 3-way, comb-style jumper bars

**Jumpered**

Subject to changes. Please also observe the further product documentation!

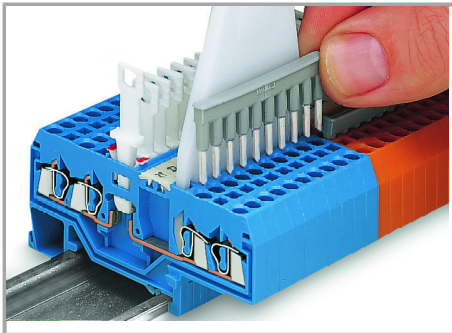


Carrier terminal blocks with component plugs,

alternate comb-style jumper bars,

3-way, comb-style jumper bar

#### Jumpered



Commoning front-entry disconnect terminal blocks via comb-style jumper bar using a 10-pole operating tool.

Subject to changes. Please also observe the further product documentation!