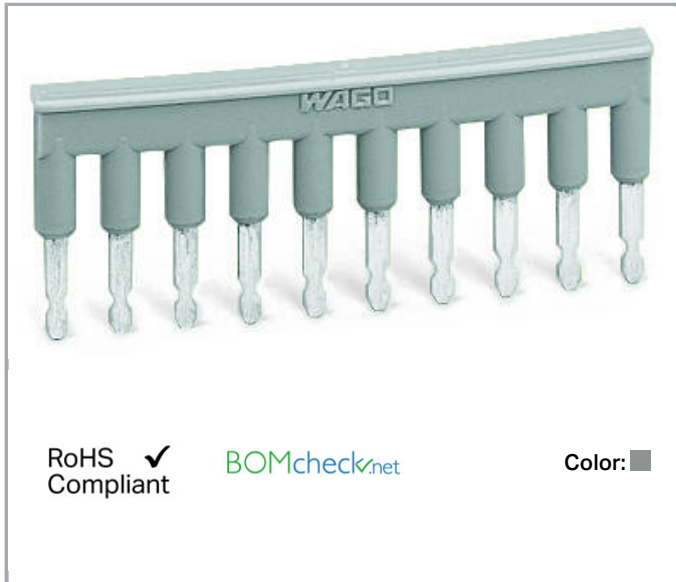


Data sheet | Item number: 279-490

Comb-style jumper bar; insulated; 10-way; IN = IN terminal block; gray

www.wago.com/279-490



Data

Geometrical Data

Width	40 mm / 1.575 inch
Depth	3.89 mm / 0.153 inch

Material Data

Color	gray
Fire load	0.022 MJ
Weight	3.6 g

Commercial data

Packaging type	BOX
Country of origin	DE
GTIN	4044918610506
Customs Tariff No.	85366990990

Counterpart

Subject to changes. Please also observe the further product documentation!

WAGO Kontakttechnik GmbH & Co. KG
Hansastr. 27
32423 Minden
Phone: +49571 887-0 | Fax: +49571 887-169
Email: info.de@wago.com | Web: www.wago.com

Do you have any questions about our products?
We are always happy to take your call at +49 (571) 887-44222.



Compatible products

tools



Item no.: 279-440

Operating tool; made of insulating material; 10-way

www.wago.com/279-440

Downloads

Documentation

Additional Information

Technical explanations	Apr 3, 2019	pdf 2.1 MB	Download
------------------------	-------------	---------------	----------

CAD/CAE-Data

CAD data

2D/3D Models 279-490	URL	Download
----------------------	-----	----------

CAE data

WSCAD Universe 279-490	URL	Download
------------------------	-----	----------

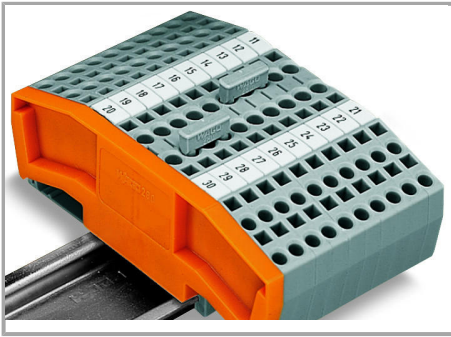
Installation Notes

Jumpered

Subject to changes. Please also observe the further product documentation!

WAGO Kontakttechnik GmbH & Co. KG
Hansastr. 27
32423 Minden
Phone: +49571 887-0 | Fax: +49571 887-169
Email: info.de@wago.com | Web: www.wago.com

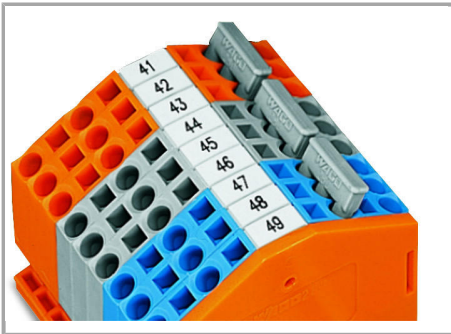
Do you have any questions about our products?
We are always happy to take your call at +49 (571) 887-44222.



Commoning with comb-style jumper bar.

Push comb-style jumper bar down until fully inserted.

Jumpered

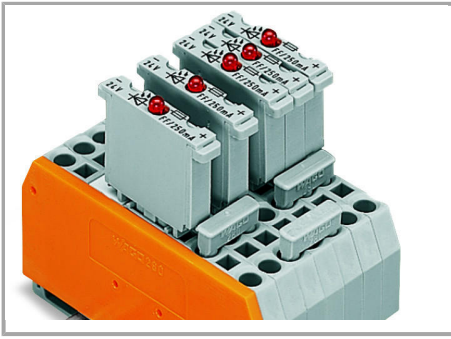


4-conductor through terminal blocks, angled type –

formation of groups with 3-way, comb-style jumper bars

Jumpered

Subject to changes. Please also observe the further product documentation!

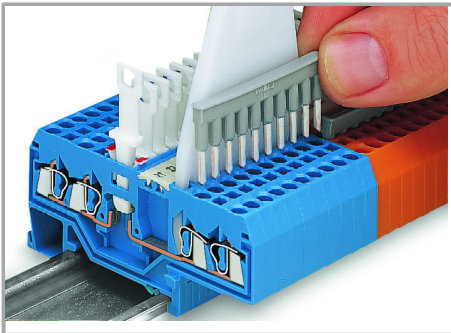


Carrier terminal blocks with component plugs,

alternate comb-style jumper bars,

3-way, comb-style jumper bar

Jumpered



Commoning front-entry disconnect terminal blocks via comb-style jumper bar using a 10-pole operating tool.

Subject to changes. Please also observe the further product documentation!