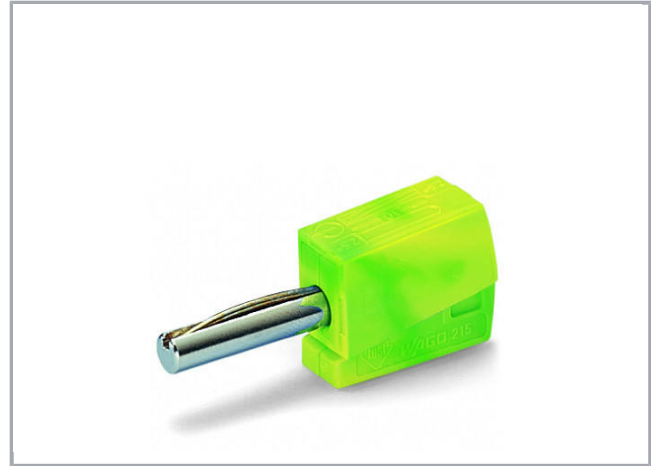


Data sheet | Item number: 215-911

Banana plug; for socket 4 mm Ø; 2,50 mm²; green-yellow

www.wago.com/215-911



RoHS 
Compliant

[BOMcheck.net](https://www.bomcheck.net)

Color: 

Data

Technical Data

Main product function	Testing accessories
Total number of potentials	1

Electrical data

Rated current	20 A
Test voltage	42 V

Connection data

Connection technology	CAGE CLAMP®
Strip length	9 ... 11 mm / 0.35 ... 0.43 inch
Total number of connection points	1

Subject to changes. Please also observe the further product documentation!

WAGO Kontakttechnik GmbH & Co. KG
Hansastr. 27
32423 Minden
Phone: +49571 887-0 | Fax: +49571 887-169
Email: info.de@wago.com | Web: www.wago.com

Do you have any questions about our products?
We are always happy to take your call at +49 (571) 887-44222.



Solid conductor	0,08 ... 2,5 mm ² / 28 ... 14 AWG
Fine-stranded conductor	0,08 ... 2,5 mm ² / 28 ... 14 AWG

Geometrical Data

Width	8 mm / 0.315 inch
Height	15 mm / 0.591 inch
Depth	40 mm / 1.575 inch

Material Data

Color	green-yellow
Weight	3.9 g

Commercial data

Product Group	2 (Terminal Block Accessories)
Packaging type	BOX
Country of origin	DE
GTIN	4045454293567
Customs Tariff No.	85366990990

Counterpart

Downloads

CAD/CAE-Data

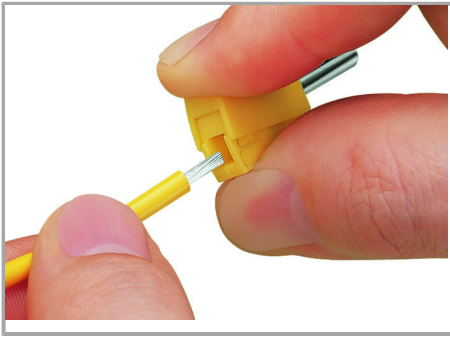
CAE data

EPLAN Data Portal 215-911	URL	Download
WSCAD Universe 215-911	URL	Download

Installation Notes

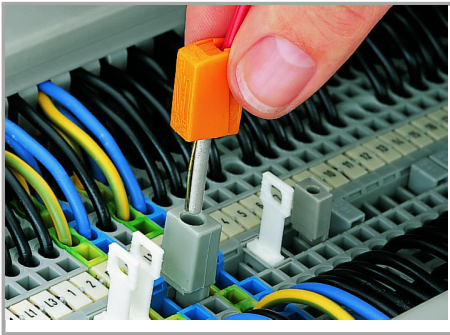
Inserting a conductor

Subject to changes. Please also observe the further product documentation!



Conductor termination: Press button fully, insert stripped conductor into square entry and release.

Testing



Testing with a banana plug

(picture shows 209-170 Test Plug Adapter).

Subject to changes. Please also observe the further product documentation!