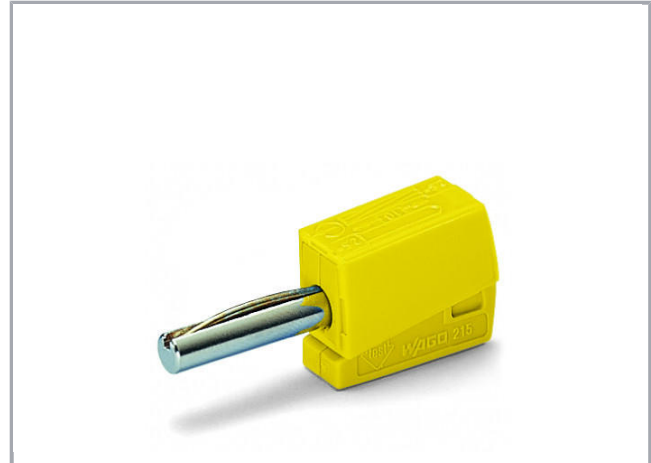


## Data sheet | Item number: 215-511

Banana plug; for socket 4 mm Ø; 2,50 mm<sup>2</sup>; yellow

[www.wago.com/215-511](http://www.wago.com/215-511)



RoHS  Compliant

[BOMcheck.net](https://www.bomcheck.net)

Color: ■

### Data

#### Technical Data

Main product function	Testing accessories
Total number of potentials	1

#### Electrical data

Rated current	20 A
Test voltage	42 V

#### Connection data

Connection technology	CAGE CLAMP®
Strip length	9 ... 11 mm / 0.35 ... 0.43 inch
Total number of connection points	1

Subject to changes. Please also observe the further product documentation!

WAGO Kontakttechnik GmbH & Co. KG  
Hansastr. 27  
32423 Minden  
Phone: +49571 887-0 | Fax: +49571 887-169  
Email: [info.de@wago.com](mailto:info.de@wago.com) | Web: [www.wago.com](http://www.wago.com)

Do you have any questions about our products?  
We are always happy to take your call at +49 (571) 887-44222.



Solid conductor	0,08 ... 2,5 mm <sup>2</sup> / 28 ... 14 AWG
Fine-stranded conductor	0,08 ... 2,5 mm <sup>2</sup> / 28 ... 14 AWG

### Geometrical Data

Width	8 mm / 0.315 inch
Height	15 mm / 0.591 inch
Depth	40 mm / 1.575 inch

### Material Data

Color	yellow
Weight	3.9 g

### Commercial data

Product Group	2 (Terminal Block Accessories)
Packaging type	BOX
Country of origin	DE
GTIN	4045454293512
Customs Tariff No.	85366990990

### Counterpart

### Downloads

#### CAD/CAE-Data

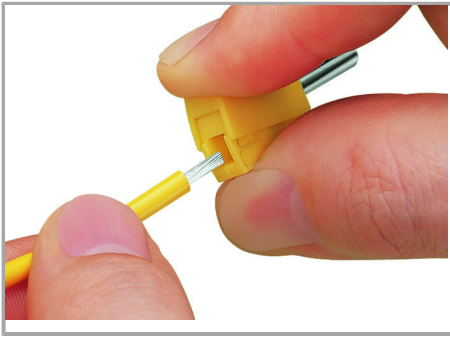
#### CAE data

<a href="#">EPLAN Data Portal 215-511</a>	<a href="#">URL</a>	<a href="#">Download</a>
<a href="#">WSCAD Universe 215-511</a>	<a href="#">URL</a>	<a href="#">Download</a>

### Installation Notes

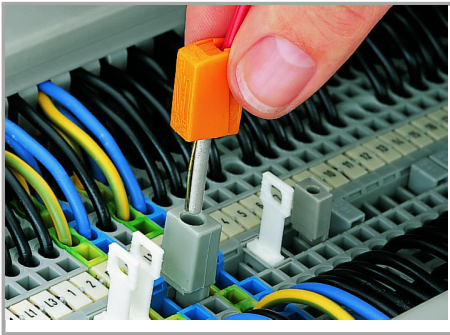
#### Inserting a conductor

Subject to changes. Please also observe the further product documentation!



Conductor termination: Press button fully, insert stripped conductor into square entry and release.

#### Testing



Testing with a banana plug

(picture shows 209-170 Test Plug Adapter).

Subject to changes. Please also observe the further product documentation!