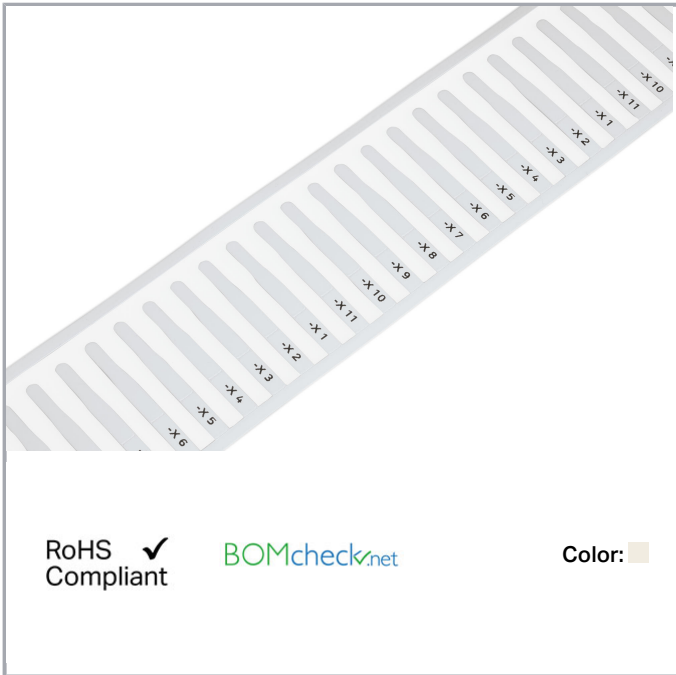


Data sheet | Item number: 211-811

Marker card; for Smart Printer; for use in nozzles; Length: 12 mm; white

www.wago.com/211-811



Data

Technical Data

Marking	plain
Marking	plain
Units per delivery form	2,500 markers/reel
Marking device	Smart Printer (Thermal Transfer Printer)

Geometrical Data

Depth	0,26 mm
Marking surface	4 x 12 mm

Mechanical data

Mounting type	Insertion
Smear resistance	smear resistant in combination with ink ribbon 258-5005

Subject to changes. Please also observe the further product documentation!

WAGO Kontakttechnik GmbH & Co. KG
Hansastr. 27
32423 Minden
Phone: +49571 887-0 | Fax: +49571 887-169
Email: info.de@wago.com | Web: www.wago.com

Do you have any questions about our products?
We are always happy to take your call at +49 (571) 887-44222.



Material Data

Color	white
Material	PET
Halogen-free	Yes
Weight	221 g

Environmental Requirements

Surrounding air (storage) temperature	10 ... 22 °C
Surrounding air (operating) temperature	-20 ... 80 °C
Relative humidity	40 ... 50 %

Commercial data

Product Group	2 (Terminal Block Accessories)
Packaging type	BOX
Country of origin	DE
GTIN	4050821674979
Customs Tariff No.	39269097900

Counterpart

Compatible products

Marking accessories

Item no.: 211-812 Nozzles; Length: 12 mm; For the use of 211-811; halogen-free; Cable outer diameter: 1.4 ... 5.0 mm	www.wago.com/211-812
Item no.: 211-813 Nozzles; Length: 12 mm; For the use of 211-811; halogen-free; Cable outer diameter: 5.0 ... 11.0 mm	www.wago.com/211-813
Item no.: 258-5000 Thermal transfer printer; Smart Printer; for complete control cabinet marking; 300 dpi	www.wago.com/258-5000

Downloads

Documentation

Additional Information

211-821, Information on handling print material	V002.08.2017	pdf 1.6 MB	Download
---	--------------	---------------	----------

Subject to changes. Please also observe the further product documentation!

WAGO Kontakttechnik GmbH & Co. KG
Hansastr. 27
32423 Minden
Phone: +49571 887-0 | Fax: +49571 887-169
Email: info.de@wago.com | Web: www.wago.com

Do you have any questions about our products?
We are always happy to take your call at +49 (571) 887-44222.

Installation Notes

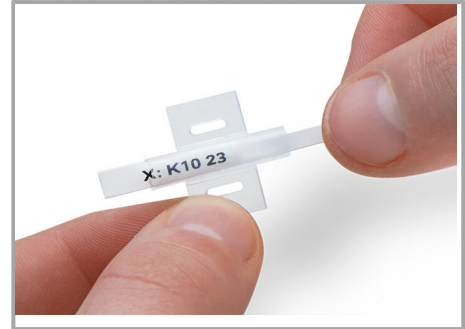
Marking



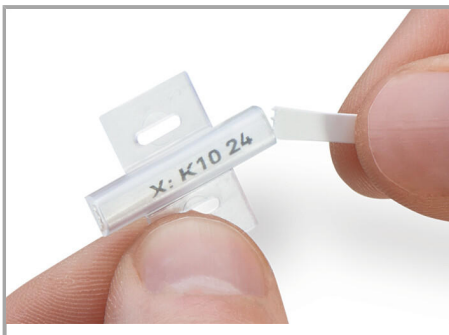
Remove the printed marker from the reel.



Slide the marker into the marking sleeve receptacle. Exchanging the marker is also possible after the conductor has been terminated.



Slide the marker through the marker slot up to the end of the sleeve.



Then remove the rest of the card by twisting it off.

Subject to changes. Please also observe the further product documentation!