

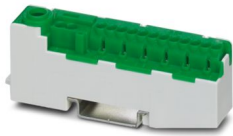
PTU 16/14X2,5 GN - Potential collective terminal



3214015

<https://www.phoenixcontact.com/us/products/3214015>

Please be informed that the data shown in this PDF document is generated from our online catalog. Please find the complete data in the user documentation. Our general terms of use for downloads are valid.



Potential collective terminal, nom. voltage: 1000 V, nominal current: 25 A, number of connections: 15, connection method: Push-in connection, First level connection, interior, Rated cross section: 2.5 mm², cross section: 1 mm² - 2.5 mm², Screw connection, 1st level connection left, Rated cross section: 16 mm², cross section: 1.5 mm² - 25 mm², mounting type: NS 35/7,5, NS 35/15, color: green

Your advantages

- The terminal block base is ideal for use in building installation and machine building applications
- In addition to the testing option in the double function shaft, all terminal blocks provide an additional test pick-off
- The Push-in connection terminal blocks are characterized by the system features of the CLIPLINE complete system and by easy and tool-free wiring of conductors with ferrules or solid conductors
- The compact design and front connection enable wiring in a confined space

Commercial data

Item number	3214015
Packing unit	10 pc
Minimum order quantity	10 pc
Sales key	BE29
Product key	BE2ZWX
Catalog page	Page 123 (C-3-2015)
GTIN	4046356664226
Weight per piece (including packing)	41.02 g
Weight per piece (excluding packing)	41.02 g
Customs tariff number	85369010
Country of origin	DE

PTU 16/14X2,5 GN - Potential collective terminal



3214015

<https://www.phoenixcontact.com/us/products/3214015>

Technical data

Product properties

Product type	Potential distributor
Number of connections	15
Number of rows	1
Potentials	1

Insulation characteristics

Overvoltage category	III
Degree of pollution	2

Electrical properties

Rated surge voltage	8 kV
Maximum power dissipation for nominal condition	2.43 W

Connection data

Type of additional hybrid connection	UT 2,5
Number of connections per level	15

First level connection, interior

Internal cylindrical gage	A3
Connection in acc. with standard	VDE 0609, Part 1/EN 60999-1
Conductor cross section rigid	1 mm ² ... 2.5 mm ²
Cross section AWG	18 ... 14 (converted acc. to IEC)
Conductor cross section flexible	1 mm ² ... 2.5 mm ²
Conductor cross-section flexible (ferrule without plastic sleeve)	0.75 mm ² ... 1.5 mm ²
Flexible conductor cross section (ferrule with plastic sleeve)	0.75 mm ² ... 1.5 mm ²
Nominal current	25 A (The sum of the individual currents may not exceed the max. value of 80 A)
Maximum load current	25 A (The sum of the individual currents may not exceed the max. value of 80 A)
Nominal voltage	1000 V
Nominal cross section	2.5 mm ²

1st level connection left

Screw thread	M5
Tightening torque	2 ... 3 Nm
Stripping length	12 mm
Internal cylindrical gage	A7
Connection in acc. with standard	VDE 0609, Part 1/EN 60999-1
Conductor cross section rigid	1.5 mm ² ... 25 mm ²
Cross section AWG	16 ... 4 (converted acc. to IEC)
Conductor cross section flexible	1 mm ² ... 16 mm ²
Conductor cross section, flexible [AWG]	18 ... 6 (converted acc. to IEC)

PTU 16/14X2,5 GN - Potential collective terminal



3214015

<https://www.phoenixcontact.com/us/products/3214015>

Conductor cross-section flexible (ferrule without plastic sleeve)	1 mm ² ... 16 mm ²
Flexible conductor cross section (ferrule with plastic sleeve)	1 mm ² ... 16 mm ²
2 conductors with same cross section, solid	1.5 mm ² ... 10 mm ²
2 conductors with same cross section, flexible	1.5 mm ² ... 6 mm ²
2 conductors with same cross section, flexible, with ferrule without plastic sleeve	1.5 mm ² ... 6 mm ²
2 conductors with the same cross section, flexible, with TWIN ferrule with plastic sleeve	1.5 mm ² ... 6 mm ²
Nominal current	80 A (with 16 mm ² conductor cross section)
Maximum load current	80 A (with 25 mm ² conductor cross section)
Nominal voltage	1000 V
Nominal cross section	16 mm ²

Dimensions

Width	17.5 mm
Height	89.5 mm
Depth on NS 35/7,5	36 mm
Depth on NS 35/15	43.5 mm

Material specifications

Color	green
Flammability rating according to UL 94	V0
Insulating material group	I
Insulating material	PA

Mechanical properties

Mechanical data

Open side panel	No
-----------------	----

Environmental and real-life conditions

Ambient conditions

Ambient temperature (storage/transport)	-25 °C ... 60 °C (for a short time, not exceeding 24 h, -60 °C to +70 °C)
Ambient temperature (assembly)	-5 °C ... 70 °C
Ambient temperature (actuation)	-5 °C ... 70 °C ()
Permissible humidity (storage/transport)	30 % ... 70 %

Standards and regulations

Connection in acc. with standard	VDE 0609, Part 1/EN 60999-1
	VDE 0609, Part 1/EN 60999-1

Mounting

Mounting type	NS 35/7,5
	NS 35/15

PTU 16/14X2,5 GN - Potential collective terminal



3214015

<https://www.phoenixcontact.com/us/products/3214015>

Classifications

ECLASS

ECLASS-11.0	27141120
ECLASS-13.0	27250119

ETIM

ETIM 9.0	EC000897
----------	----------

UNSPSC

UNSPSC 21.0	39121400
-------------	----------

PTU 16/14X2,5 GN - Potential collective terminal



3214015

<https://www.phoenixcontact.com/us/products/3214015>

Environmental product compliance

China RoHS	Environmentally friendly use period: unlimited = EFUP-e No hazardous substances above threshold values
------------	---

Phoenix Contact 2024 © - all rights reserved
<https://www.phoenixcontact.com>

Phoenix Contact USA
586 Fulling Mill Road
Middletown, PA 17057, United States
(+717) 944-1300
info@phoenixcon.com