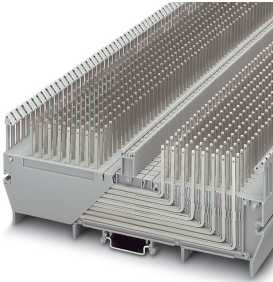


Marshalling panel - RV 8-TP(2,4X0,8)L - 3191013

Please be informed that the data shown in this PDF Document is generated from our Online Catalog. Please find the complete data in the user's documentation. Our General Terms of Use for Downloads are valid (<http://phoenixcontact.com/download>)



Marshalling panel, nom. voltage: 250 V, nominal current: 5 A, cross section: 0.22 mm² - 0.56 mm², AWG: 20 - 24, connection method: TERMI-POINT[®], number of positions: 1, number of connections: 16, width: 7.6 mm, length: 202 mm, color: gray, mounting: NS 35/7,5, NS 35/15

Your advantages

- ✓ The external housing ridges act as a cable duct side panel, such that good cable routing is ensured and standard cable duct covers can be used
- ✓ The red-white marking masks with alternating negative/positive 1 - 8 or a - h labeling clearly distinguish the rows of pins and make the process of connecting and finding specific connections much easier
- ✓ There are two housing grooves between the pin panel and labeling rib into which the potential busbars can be inserted
- ✓ The RV 8 element has eight 2.4 x 0.8 mm TERMI-POINT[®](TP) pins for the incoming and outgoing conductors on both sides of the raised labeling rib



Key Commercial Data

Packing unit	1 pc
GTIN	 4 017918 093426
GTIN	4017918093426
Weight per Piece (excluding packing)	68.610 g
Custom tariff number	85369010
Country of origin	Poland

Technical data

General

Number of levels	1
Number of connections	16
Color	gray
Insulating material	PA
Flammability rating according to UL 94	V0

Marshalling panel - RV 8-TP(2,4X0,8)L - 3191013

Technical data

General

Rated surge voltage	4 kV
Degree of pollution	3
Overvoltage category	III
Insulating material group	I
Nominal current I_N	5 A
Max. load current	5 A
Nominal voltage U_N	250 V
Open side panel	No
Number of positions	1

Dimensions

Width	7.6 mm
Length	202 mm
Height NS 35/7,5	81.5 mm
Height NS 35/15	89 mm

Connection data

Conductor cross section solid min.	0.22 mm ²
Conductor cross section solid max.	0.56 mm ²
Conductor cross section flexible min.	0.22 mm ²
Conductor cross section flexible max.	0.56 mm ²
Conductor cross section AWG min.	24
Conductor cross section AWG max.	20
Conductor cross section flexible, with ferrule with plastic sleeve min.	0.25 mm ²
Conductor cross section flexible, with ferrule with plastic sleeve max.	0.5 mm ²
Connection method	TERMI-POINT®
TERMI-POINT pin dimensions	2.4 x 0.8 mm
Position of the TERMI-POINT pin	vertical

Ambient conditions

Operating temperature	-60 °C ... 85 °C
Ambient temperature (storage/transport)	-25 °C ... 55 °C (for a short time, not exceeding 24 h, -60 °C to +70 °C)
Permissible humidity (storage/transport)	30 % ... 70 %
Ambient temperature (assembly)	-5 °C ... 70 °C
Ambient temperature (actuation)	-5 °C ... 70 °C

Standards and Regulations

Flammability rating according to UL 94	V0
--	----

Environmental Product Compliance

Marshalling panel - RV 8-TP(2,4X0,8)L - 3191013

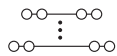
Technical data

Environmental Product Compliance

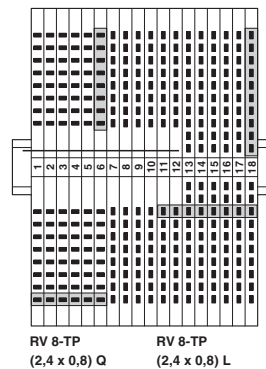
China RoHS	Environmentally friendly use period: unlimited = EFUP-e
	No hazardous substances above threshold values

Drawings

Circuit diagram



Functional drawing



Classifications

eCl@ss

eCl@ss 10.0.1	27141120
eCl@ss 11.0	27141120
eCl@ss 4.0	27141100
eCl@ss 4.1	27141100
eCl@ss 5.0	27141100
eCl@ss 5.1	27141100
eCl@ss 6.0	27141100
eCl@ss 7.0	27141120
eCl@ss 9.0	27141120

ETIM

ETIM 2.0	EC000897
ETIM 3.0	EC000897
ETIM 4.0	EC000897
ETIM 6.0	EC000897
ETIM 7.0	EC000897

UNSPSC

UNSPSC 6.01	30211811
-------------	----------

Marshalling panel - RV 8-TP(2,4X0,8)L - 3191013

Classifications

UNSPSC

UNSPSC 7.0901	39121410
UNSPSC 11	39121410
UNSPSC 12.01	39121410
UNSPSC 13.2	39121410
UNSPSC 18.0	39121410
UNSPSC 19.0	39121410
UNSPSC 20.0	39121410
UNSPSC 21.0	39121410

Approvals

Approvals

Approvals

EAC

Ex Approvals

Approval details

EAC		RU C- DE.BL08.B.00541
-----	---	--------------------------
