

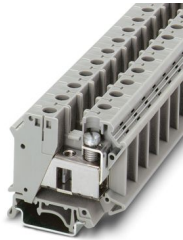
UTI 35 - Installation terminal block



3074088

<https://www.phoenixcontact.com/us/products/3074088>

Please be informed that the data shown in this PDF document is generated from our online catalog. Please find the complete data in the user documentation. Our general terms of use for downloads are valid.



Installation terminal block, nom. voltage: 800 V, nominal current: 125 A, Screw connection, Rated cross section: 35 mm², cross section: 0.75 mm² - 35 mm², mounting type: NS 35/7,5, NS 35/15, color: gray

Your advantages

- The installation terminal block features a particularly low-profile design and is suitable for wiring in flat installation distributors
- The asymmetrical arrangement of the terminal blocks on the DIN rail enables the neutral busbar to be routed past the terminal blocks

Commercial data

Item number	3074088
Packing unit	50 pc
Minimum order quantity	50 pc
Sales key	BE01
Product key	BE1151
Catalog page	Page 187 (C-1-2019)
GTIN	4046356347266
Weight per piece (including packing)	46.103 g
Weight per piece (excluding packing)	44.26 g
Customs tariff number	85369010
Country of origin	CN

UTI 35 - Installation terminal block



3074088

<https://www.phoenixcontact.com/us/products/3074088>

Technical data

Product properties

Product type	Installation terminal block
Number of connections	2
Number of rows	1
Potentials	1

Insulation characteristics

Overvoltage category	III
Degree of pollution	3

Electrical properties

Rated surge voltage	8 kV
Maximum power dissipation for nominal condition	4.06 W

Connection data

Number of connections per level	2
Nominal cross section	35 mm ²

Level 1 above 1 below 1

Screw thread	M6
Tightening torque	3.2 ... 3.7 Nm
Stripping length	16 mm
Connection in acc. with standard	IEC 60947-7-1
Conductor cross section rigid	0.75 mm ² ... 35 mm ²
Cross section AWG	18 ... 2 (converted acc. to IEC)
Conductor cross section flexible	0.75 mm ² ... 35 mm ²
Conductor cross section, flexible [AWG]	18 ... 2 (converted acc. to IEC)
Conductor cross-section flexible (ferrule without plastic sleeve)	0.75 mm ² ... 35 mm ²
Flexible conductor cross section (ferrule with plastic sleeve)	0.75 mm ² ... 35 mm ²
Cross-section with insertion bridge, rigid	35 mm ²
Cross-section with insertion bridge, flexible	35 mm ²
2 conductors with same cross section, solid	0.75 mm ² ... 10 mm ²
2 conductors with same cross section, flexible	0.75 mm ² ... 10 mm ²
2 conductors with same cross section, flexible, with ferrule without plastic sleeve	0.75 mm ² ... 10 mm ²
2 conductors with the same cross section, flexible, with TWIN ferrule with plastic sleeve	0.75 mm ² ... 6 mm ²
Nominal current	125 A
Maximum load current	125 A (with 35 mm ² conductor cross section)
Nominal voltage	800 V
Nominal cross section	35 mm ²

Dimensions

UTI 35 - Installation terminal block



3074088

<https://www.phoenixcontact.com/us/products/3074088>

Width	15.2 mm
Height	55 mm
Depth on NS 32	56 mm
Depth on NS 35/7,5	51 mm

Material specifications

Color	gray
Flammability rating according to UL 94	V2
Insulating material group	I
Insulating material	PA
Temperature index of insulation material (DIN EN 60216-1 (VDE 0304-21))	115 °C
Relative insulation material temperature index (Elec., UL 746 B)	125 °C

Electrical tests

Surge voltage test

Test voltage setpoint	9.8 kV
Result	Test passed

Temperature-rise test

Requirement temperature-rise test	Increase in temperature ≤ 45 K
Result	Test passed
Short-time withstand current 35 mm ²	4.2 kA
Result	Test passed

Power-frequency withstand voltage

Test voltage setpoint	3.5 kV
Result	Test passed

Mechanical properties

Mechanical data

Open side panel	No
-----------------	----

Mechanical tests

Mechanical strength

Result	Test passed
--------	-------------

Attachment on the carrier

DIN rail/fixing support	NS 32/NS 35
Test force setpoint	10 N
Result	Test passed

Test for conductor damage and slackening

Rotation speed	10 rpm
Revolutions	135

UTI 35 - Installation terminal block



3074088

<https://www.phoenixcontact.com/us/products/3074088>

Conductor cross section/weight	0.75 mm ² / 0.4 kg
	35 mm ² / 6.8 kg
Result	Test passed

Environmental and real-life conditions

Needle-flame test

Time of exposure	30 s
Result	Test passed

Ambient conditions

Ambient temperature (operation)	-60 °C ... 110 °C (Operating temperature range incl. self-heating; for max. short-term operating temperature, see RTI Elec.)
Ambient temperature (storage/transport)	-25 °C ... 60 °C (for a short time, not exceeding 24 h, -60 °C to +70 °C)
Ambient temperature (assembly)	-5 °C ... 70 °C
Permissible humidity (operation)	20 % ... 90 %
Permissible humidity (storage/transport)	30 % ... 70 %

Standards and regulations

Connection in acc. with standard	IEC 60947-7-1
----------------------------------	---------------

Mounting

Mounting type	NS 35/7,5
	NS 35/15

UTI 35 - Installation terminal block



3074088

<https://www.phoenixcontact.com/us/products/3074088>

Classifications

ECLASS

ECLASS-11.0	27141125
ECLASS-12.0	27141125
ECLASS-13.0	27250110

ETIM

ETIM 9.0	EC001329
----------	----------

UNSPSC

UNSPSC 21.0	39121400
-------------	----------

UTI 35 - Installation terminal block



3074088

<https://www.phoenixcontact.com/us/products/3074088>

Environmental product compliance

China RoHS	Environmentally friendly use period: unlimited = EFUP-e
	No hazardous substances above threshold values

Phoenix Contact 2024 © - all rights reserved
<https://www.phoenixcontact.com>

Phoenix Contact USA
586 Fulling Mill Road
Middletown, PA 17057, United States
(+717) 944-1300
info@phoenixcon.com