

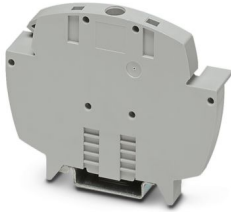
E-UTWE 6 - End bracket

3069055

<https://www.phoenixcontact.com/us/products/3069055>

Please be informed that the data shown in this PDF document is generated from our online catalog. Please find the complete data in the user documentation. Our general terms of use for downloads are valid.

End bracket, material: PA, color: gray



Your advantages

- DIN-rail mountable on NS 35

Commercial data

Item number	3069055
Packing unit	10 pc
Minimum order quantity	10 pc
Product key	BE6111
Catalog page	Page 616 (C-1-2019)
GTIN	4046356871891
Weight per piece (including packing)	23.69 g
Weight per piece (excluding packing)	23.69 g
Country of origin	PL

E-UTWE 6 - End bracket



3069055

<https://www.phoenixcontact.com/us/products/3069055>

Technical data

Product properties

Product type	End bracket
--------------	-------------

Dimensions

Width	8.2 mm
Height	80.8 mm
Depth	64 mm
Depth on NS 35/7,5	64.5 mm
Depth on NS 35/15	72 mm
Length	80.8 mm

Material specifications

Color	gray
Material	PA
Flammability rating according to UL 94	V0
Static insulating material application in cold	-60 °C
Temperature index of insulation material (DIN EN 60216-1 (VDE 0304-21))	125 °C
Relative insulation material temperature index (Elec., UL 746 B)	130 °C
Fire protection for rail vehicles (DIN EN 45545-2) R22	HL 1 - HL 3
Fire protection for rail vehicles (DIN EN 45545-2) R23	HL 1 - HL 3
Fire protection for rail vehicles (DIN EN 45545-2) R24	HL 1 - HL 3
Fire protection for rail vehicles (DIN EN 45545-2) R26	HL 1 - HL 3
Calorimetric heat release NFPA 130 (ASTM E 1354)	27,5 MJ/kg
Surface flammability NFPA 130 (ASTM E 162)	passed
Specific optical density of smoke NFPA 130 (ASTM E 662)	passed
Smoke gas toxicity NFPA 130 (SMP 800C)	passed

Environmental and real-life conditions

Ambient conditions

Ambient temperature (operation)	-60 °C ... 105 °C (max. short-term operating temperature RTI Elec.)
Ambient temperature (storage/transport)	-25 °C ... 60 °C (for a short time, not exceeding 24 h, -60 °C to +70 °C)
Ambient temperature (assembly)	-5 °C ... 70 °C
Ambient temperature (actuation)	-5 °C ... 70 °C
Permissible humidity (storage/transport)	30 % ... 70 %

Mounting

Mounting type	NS 35/7,5
	NS 35/15

E-UTWE 6 - End bracket



3069055

<https://www.phoenixcontact.com/us/products/3069055>

Classifications

ECLASS

ECLASS-11.0	27141135
ECLASS-12.0	27141135
ECLASS-13.0	27250302

ETIM

ETIM 9.0	EC001041
----------	----------

UNSPSC

UNSPSC 21.0	39121400
-------------	----------

E-UTWE 6 - End bracket

3069055

<https://www.phoenixcontact.com/us/products/3069055>



Environmental product compliance

China RoHS	Environmentally friendly use period: unlimited = EFUP-e
	No hazardous substances above threshold values

Phoenix Contact 2024 © - all rights reserved
<https://www.phoenixcontact.com>

Phoenix Contact USA
586 Fulling Mill Road
Middletown, PA 17057, United States
(+717) 944-1300
info@phoenixcon.com