

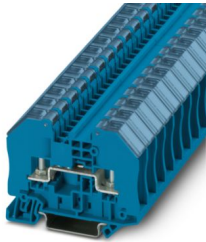
# RTO 3-TC BU - Feed-through terminal block



3049835

<https://www.phoenixcontact.com/us/products/3049835>

Please be informed that the data shown in this PDF document is generated from our online catalog. Please find the complete data in the user documentation. Our general terms of use for downloads are valid.



Feed-through terminal block with bolt connection technology and transparent safety contact hood, cross section: 0.1 - 2.5 mm<sup>2</sup>, AWG: 26 - 14, width 12.3 mm, color: blue

## Your advantages

- Four bridge shafts per terminal block
- Terminal point always freely accessible

## Commercial data

Item number	3049835
Packing unit	50 pc
Minimum order quantity	50 pc
Sales key	BE43
Product key	BE4312
Catalog page	Page 379 (C-1-2019)
GTIN	4046356425131
Weight per piece (including packing)	20.89 g
Weight per piece (excluding packing)	20.89 g
Customs tariff number	85369010
Country of origin	CN

# RTO 3-TC BU - Feed-through terminal block



3049835

<https://www.phoenixcontact.com/us/products/3049835>

## Technical data

### Notes

General	Note: the BE-RT... path extension is to be used for non-insulated cable lugs (see accessories).
---------	---

### Product properties

Product type	Bolt connection terminal block
Number of connections	2
Number of rows	1
Potentials	1

### Insulation characteristics

Overvoltage category	III
Degree of pollution	3

### Electrical properties

Rated surge voltage	8 kV
Maximum power dissipation for nominal condition	0.77 W

### Connection data

Number of connections per level	2
Nominal cross section	2.5 mm <sup>2</sup>

#### 1 level

Stripping length	The stripping length depends on the specification provided by the cable lug manufacturer.
Connection in acc. with standard	IEC 60947-7-1
Nominal current	24 A
Maximum load current	24 A (with a 2.5 mm <sup>2</sup> conductor cross section)
Nominal voltage	1000 V
Nominal cross section	2.5 mm <sup>2</sup>

#### Cable lug connection DIN 46234:1980-03

Connection in acc. with standard	DIN 46234:1980-03
Cross section	0.5 mm <sup>2</sup> ... 2.5 mm <sup>2</sup>
Cross section range AWG	20 ... 14 (converted acc. to IEC)
Hole diameter	3.2 mm
Width	6 mm
Bolt diameter	3 mm
Screw thread	M3
Tightening torque	0.6 ... 0.8 Nm
Connection in acc. with standard	DIN 46237:1970-07
Cross section	1 mm <sup>2</sup> ... 2.5 mm <sup>2</sup>
Cross section range AWG	18 ... 14 (converted acc. to IEC)

# RTO 3-TC BU - Feed-through terminal block



3049835

<https://www.phoenixcontact.com/us/products/3049835>

Hole diameter	3.2 mm
Width	6 mm
Bolt diameter	3 mm
Screw thread	M3
Tightening torque	0.6 ... 0.8 Nm
Identification color of ring cable lugs : red	1 mm <sup>2</sup>
Identification color of ring cable lugs : blue	2.5 mm <sup>2</sup>

## Dimensions

Width	12.3 mm
End cover width	2.2 mm
Height	66 mm
Depth on NS 35/7,5	51 mm
Depth on NS 35/15	58.5 mm

## Material specifications

Color	blue
Flammability rating according to UL 94	V0
Insulating material group	I
Insulating material	PA

## Electrical tests

### Surge voltage test

Test voltage setpoint	9.8 kV
Result	Test passed

### Temperature-rise test

Requirement temperature-rise test	Increase in temperature $\leq$ 45 K
Result	Test passed
Short-time withstand current 2.5 mm <sup>2</sup>	0.3 kA
Result	Test passed

### Power-frequency withstand voltage

Test voltage setpoint	2.2 kV
Result	Test passed

## Mechanical properties

### Mechanical data

Open side panel	Yes
-----------------	-----

## Mechanical tests

### Mechanical strength

Result	Test passed
--------	-------------

# RTO 3-TC BU - Feed-through terminal block



3049835

<https://www.phoenixcontact.com/us/products/3049835>

## Attachment on the carrier

DIN rail/fixing support	NS 35
Test force setpoint	1 N
Result	Test passed

## Environmental and real-life conditions

### Needle-flame test

Time of exposure	30 s
Result	Test passed

### Ambient conditions

Ambient temperature (operation)	-60 °C ... 110 °C (Operating temperature range incl. self-heating; for max. short-term operating temperature, see RTI Elec.)
Ambient temperature (storage/transport)	-25 °C ... 60 °C (for a short time, no longer than 24 h, -60°C to +70°C)
Ambient temperature (assembly)	-5 °C ... 70 °C
Ambient temperature (actuation)	-5 °C ... 70 °C
Permissible humidity (operation)	20 % ... 90 %
Permissible humidity (storage/transport)	30 % ... 70 %

## Standards and regulations

Connection in acc. with standard	IEC 60947-7-1
----------------------------------	---------------

## Mounting

Mounting type	NS 35/7,5
	NS 35/15

# RTO 3-TC BU - Feed-through terminal block



3049835

<https://www.phoenixcontact.com/us/products/3049835>

## Classifications

### ECLASS

ECLASS-11.0	27141120
ECLASS-13.0	27250101

### ETIM

ETIM 9.0	EC000897
----------	----------

### UNSPSC

UNSPSC 21.0	39121400
-------------	----------

# RTO 3-TC BU - Feed-through terminal block



3049835

<https://www.phoenixcontact.com/us/products/3049835>

## Environmental product compliance

China RoHS	Environmentally friendly use period: unlimited = EFUP-e
	No hazardous substances above threshold values

Phoenix Contact 2024 © - all rights reserved  
<https://www.phoenixcontact.com>

Phoenix Contact USA  
586 Fulling Mill Road  
Middletown, PA 17057, United States  
(+717) 944-1300  
[info@phoenixcon.com](mailto:info@phoenixcon.com)