

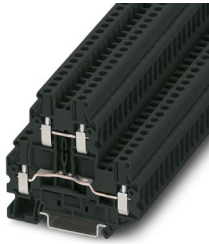
UTT 2,5 BK - Double-level terminal block



3044637

<https://www.phoenixcontact.com/us/products/3044637>

Please be informed that the data shown in this PDF document is generated from our online catalog. Please find the complete data in the user documentation. Our general terms of use for downloads are valid.



Double-level terminal block, nom. voltage: 500 V, nominal current: 24 A, connection method: Screw connection, Rated cross section: 2.5 mm², cross section: 0.14 mm² - 4 mm², mounting type: NS 35/7,5, NS 35/15, color: black

Your advantages

- Since there are two function shafts per level, all potential distribution tasks can be implemented quickly
- As an option, the levels can be connected using the FBS-PV UT vertical bridge
- For a clear overview, each terminal point supports large-surface labeling
- For example, two separate potentials can be routed side by side with the help of bridging between non-adjacent terminal blocks

Commercial data

| | |
|--------------------------------------|---------------|
| Item number | 3044637 |
| Packing unit | 50 pc |
| Minimum order quantity | 50 pc |
| Sales key | BE01 |
| Product key | BE1114 |
| GTIN | 4046356694230 |
| Weight per piece (including packing) | 15.802 g |
| Weight per piece (excluding packing) | 15.77 g |
| Customs tariff number | 85369010 |
| Country of origin | DE |

UTT 2,5 BK - Double-level terminal block



3044637

<https://www.phoenixcontact.com/us/products/3044637>

Technical data

Product properties

| | |
|-----------------------|----------------------------|
| Product type | Multi-level terminal block |
| Number of connections | 4 |
| Number of rows | 2 |
| Potentials | 2 |

Insulation characteristics

| | |
|----------------------|-----|
| Overvoltage category | III |
| Degree of pollution | 3 |

Electrical properties

| | |
|---|--------|
| Rated surge voltage | 6 kV |
| Maximum power dissipation for nominal condition | 0.77 W |

Connection data

| | |
|---------------------------------|---------------------|
| Number of connections per level | 2 |
| Nominal cross section | 2.5 mm ² |

Level 1+2

| | |
|---|--|
| Screw thread | M3 |
| Tightening torque | 0.5 ... 0.6 Nm |
| Stripping length | 9 mm |
| Internal cylindrical gage | A3 |
| Connection in acc. with standard | IEC 60947-7-1 |
| Conductor cross section rigid | 0.14 mm ² ... 4 mm ² |
| Cross section AWG | 26 ... 12 (converted acc. to IEC) |
| Conductor cross section flexible | 0.14 mm ² ... 4 mm ² |
| Conductor cross section, flexible [AWG] | 26 ... 12 (converted acc. to IEC) |
| Conductor cross-section flexible (ferrule without plastic sleeve) | 0.14 mm ² ... 2.5 mm ² |
| Flexible conductor cross section (ferrule with plastic sleeve) | 0.14 mm ² ... 2.5 mm ² |
| 2 conductors with same cross section, solid | 0.14 mm ² ... 1.5 mm ² |
| 2 conductors with same cross section, flexible | 0.14 mm ² ... 1.5 mm ² |
| 2 conductors with same cross section, flexible, with ferrule without plastic sleeve | 0.14 mm ² ... 1.5 mm ² |
| 2 conductors with the same cross section, flexible, with TWIN ferrule with plastic sleeve | 0.5 mm ² ... 1.5 mm ² |
| Nominal current | 24 A |
| Maximum load current | 28 A (in case of a 4 mm ² conductor cross section, the maximum load current must not be exceeded by the total current of all connected conductors.) |
| Nominal voltage | 500 V |
| Nominal cross section | 2.5 mm ² |

Ex data

UTT 2,5 BK - Double-level terminal block



3044637

<https://www.phoenixcontact.com/us/products/3044637>

Rated data (ATEX/IECEX)

| | |
|--|--------------------------------------|
| Identification | ⊕ II 2 GD Ex eb IIC Gb |
| Operating temperature range | -60 °C ... 110 °C |
| Ex-certified accessories | 3047293 D-UTT 2,5/4 |
| | 3047303 DP-UTT 2,5/4 |
| | 3047316 ATP-UTT 2,5/4 |
| | 1205053 SZS 0,6X3,5 |
| | 3022276 CLIPFIX 35-5 |
| | 3022218 CLIPFIX 35 |
| List of bridges | Plug-in bridge / FBS 2-5 / 3030161 |
| | Plug-in bridge / FBS 3-5 / 3030174 |
| | Plug-in bridge / FBS 4-5 / 3030187 |
| | Plug-in bridge / FBS 5-5 / 3030190 |
| | Plug-in bridge / FBS 10-5 / 3030213 |
| | Plug-in bridge / FBS 20-5 / 3030226 |
| Bridge data | 20 A / 2.5 mm ² |
| Ex temperature increase | 40 K (22.5 A / 2.5 mm ²) |
| Rated voltage | 352 V |
| for bridging with bridge | 352 V |
| - At bridging between non-adjacent terminal blocks | 352 V |
| - At bridging between non-adjacent terminal blocks via PE terminal block | 275 V |
| - At cut-to-length bridging with cover | 220 V |
| - At cut-to-length bridging with partition plate | 176 V |
| Rated insulation voltage | 320 V |
| output | (Permanent) |

Ex level General

| | |
|----------------------|------|
| Rated current | 20 A |
| Maximum load current | 24 A |

Ex connection data General

| | |
|---|--|
| Torque range | 0.5 Nm ... 0.6 Nm |
| Nominal cross section | 2.5 mm ² |
| Rated cross section AWG | 14 |
| Connection capacity rigid | 0.14 mm ² ... 4 mm ² |
| Connection capacity AWG | 26 ... 12 |
| Connection capacity flexible | 0.14 mm ² ... 2.5 mm ² |
| Connection capacity AWG | 26 ... 14 |
| 2 conductors with same cross section, solid | 0.14 mm ² ... 1.5 mm ² |
| 2 conductors with the same cross-section AWG rigid | 26 ... 16 |
| 2 conductors with same cross section, stranded | 0.14 mm ² ... 1.5 mm ² |
| 2 conductors with the same cross-section AWG flexible | 26 ... 16 |
| output | (Permanent) |

UTT 2,5 BK - Double-level terminal block



3044637

<https://www.phoenixcontact.com/us/products/3044637>

Ex level Level 1

| | |
|--------------------|-------------|
| Contact resistance | 0.6 mΩ |
| output | (Permanent) |

Ex level Level 2

| | |
|--------------------|--------|
| Contact resistance | 0.4 mΩ |
|--------------------|--------|

Dimensions

| | |
|--------------------|---------|
| Width | 5.2 mm |
| End cover width | 2.2 mm |
| Height | 69.9 mm |
| Depth | 64.4 mm |
| Depth on NS 35/7,5 | 65 mm |
| Depth on NS 35/15 | 72.5 mm |

Material specifications

| | |
|---|-------------|
| Color | black |
| Flammability rating according to UL 94 | V0 |
| Insulating material group | I |
| Insulating material | PA |
| Static insulating material application in cold | -60 °C |
| Temperature index of insulation material (DIN EN 60216-1 (VDE 0304-21)) | 125 °C |
| Relative insulation material temperature index (Elec., UL 746 B) | 130 °C |
| Fire protection for rail vehicles (DIN EN 45545-2) R22 | HL 1 - HL 3 |
| Fire protection for rail vehicles (DIN EN 45545-2) R23 | HL 1 - HL 3 |
| Fire protection for rail vehicles (DIN EN 45545-2) R24 | HL 1 - HL 3 |
| Fire protection for rail vehicles (DIN EN 45545-2) R26 | HL 1 - HL 3 |
| Calorimetric heat release NFPA 130 (ASTM E 1354) | 27,5 MJ/kg |
| Surface flammability NFPA 130 (ASTM E 162) | passed |
| Specific optical density of smoke NFPA 130 (ASTM E 662) | passed |
| Smoke gas toxicity NFPA 130 (SMP 800C) | passed |

Mechanical properties

Mechanical data

| | |
|-----------------|-----|
| Open side panel | Yes |
|-----------------|-----|

Environmental and real-life conditions

Ambient conditions

| | |
|---|--|
| Ambient temperature (operation) | -60 °C ... 110 °C (Operating temperature range incl. self-heating; for max. short-term operating temperature, see RTI Elec.) |
| Ambient temperature (storage/transport) | -25 °C ... 60 °C (for a short time, no longer than 24 h, -60°C to +70°C) |
| Ambient temperature (assembly) | -5 °C ... 70 °C |

UTT 2,5 BK - Double-level terminal block



3044637

<https://www.phoenixcontact.com/us/products/3044637>

| | |
|--|-----------------|
| Ambient temperature (actuation) | -5 °C ... 70 °C |
| Permissible humidity (operation) | 20 % ... 90 % |
| Permissible humidity (storage/transport) | 30 % ... 70 % |

Standards and regulations

| | |
|----------------------------------|---------------|
| Connection in acc. with standard | IEC 60947-7-1 |
|----------------------------------|---------------|

Mounting

| | |
|---------------|-----------|
| Mounting type | NS 35/7,5 |
| | NS 35/15 |

UTTB 2,5 BK - Double-level terminal block



3044637

<https://www.phoenixcontact.com/us/products/3044637>

Classifications

ECLASS

| | |
|-------------|----------|
| ECLASS-11.0 | 27141120 |
| ECLASS-13.0 | 27250102 |

ETIM

| | |
|----------|----------|
| ETIM 9.0 | EC000897 |
|----------|----------|

UNSPSC

| | |
|-------------|----------|
| UNSPSC 21.0 | 39121400 |
|-------------|----------|

UTTB 2,5 BK - Double-level terminal block



3044637

<https://www.phoenixcontact.com/us/products/3044637>

Environmental product compliance

| | |
|------------|--|
| REACH SVHC | Lead 7439-92-1 |
| China RoHS | Environmentally Friendly Use Period = 50 years |
| | For information on hazardous substances, refer to the manufacturer's declaration available under "Downloads" |

Phoenix Contact 2024 © - all rights reserved

<https://www.phoenixcontact.com>

Phoenix Contact USA
586 Fulling Mill Road
Middletown, PA 17057, United States
(+717) 944-1300
info@phoenixcon.com