

Reversing load relay - ELR W1/ 6-24DC - 2982090


Please be informed that the data shown in this PDF Document is generated from our Online Catalog. Please find the complete data in the user's documentation. Our General Terms of Use for Downloads are valid (<http://phoenixcontact.com/download>)



Electronic reversing load relay, for controlling DC motors, with LED display and protective circuit, output: 10 - 30 V DC/6 A with a switch-over time of 80 ms



Key Commercial Data

| | |
|--------------------------------------|---|
| Packing unit | 1 pc |
| GTIN |  4 017918 943936 |
| GTIN | 4017918943936 |
| Weight per Piece (excluding packing) | 117.700 g |
| Custom tariff number | 85371098 |
| Country of origin | Germany |

Technical data

Note

| | |
|-------------------------|---|
| Utilization restriction | EMC: class A product, see manufacturer's declaration in the download area |
|-------------------------|---|

Dimensions

| | |
|--------|----------|
| Width | 12.5 mm |
| | 12.5 mm |
| Height | 99 mm |
| | 99 mm |
| Depth | 114.5 mm |
| | 114.5 mm |

Ambient conditions

Reversing load relay - ELR W1/ 6-24DC - 2982090

Technical data

Ambient conditions

| | |
|---|------------------|
| Ambient temperature (operation) | -20 °C ... 60 °C |
| Ambient temperature (storage/transport) | -20 °C ... 80 °C |
| Degree of protection | IP20 |

Input data

| | |
|--|--|
| Input name | Device supply |
| Nominal supply voltage | 24 V DC \pm 20 % |
| Rated control circuit supply voltage U_s | 24 V DC |
| Control supply voltage range | 10 V DC ... 30 V DC |
| Rated control supply current I_s | 7 mA |
| Protective circuit | Surge protection |
| Operating voltage display | Green LED |
| Input name | Control input right/left |
| Nominal input voltage U_N | 24 V DC |
| Input voltage range in reference to U_N | 0.8 ... 1.2 |
| Input voltage range | 19.2 V DC ... 28.8 V DC |
| Typical input current at U_N | 3 mA |
| Rated actuating voltage U_c | 24 V DC |
| Triggering voltage range | 19.2 V DC ... 28.8 V DC |
| Rated actuating current I_c | 3 mA |
| Protective circuit | Reverse polarity protection |
| | Surge protection |
| Surge voltage protection | > 33 V DC |
| Typical response time | 200 μ s |
| Status display | LED yellow, forward running (R), LED yellow, reverse running (L) |
| Current consumption | 3 mA |
| Switchover time R_L/L_L (turn-on time) | 80 ms |

Output data load output

| | |
|-------------------------------|-----------------------------|
| Output name | DC output |
| Rated operating voltage U_e | 24 V DC |
| Operating voltage range | 10 V DC ... 30 V DC |
| Type of protection | Reverse polarity protection |
| | Surge protection |

General

| | |
|-----------------------|--|
| Mounting position | vertical (horizontal DIN rail, motor output below) |
| Assembly instructions | alignable, for spacing see derating |

Reversing load relay - ELR W1/ 6-24DC - 2982090

Technical data

General

| | |
|----------------|-----------------------|
| Operating mode | 100% operating factor |
|----------------|-----------------------|

Connection data

| | |
|----------------------------------|---|
| Connection name | Control circuits |
| Connection method | Screw connection |
| Stripping length | 8 mm |
| Screw thread | M3 |
| Conductor cross section solid | 0.14 mm ² ... 2.5 mm ² |
| Conductor cross section flexible | 0.14 mm ² ... 2.5 mm ² |
| Conductor cross section AWG | 26 ... 14 |
| Torque | 0.5 Nm ... 0.6 Nm |
| | 5 lb _f -in. ... 7 lb _f -in. |

Connection data 2

| | |
|----------------------------------|---|
| Connection name | Load circuit |
| Connection method | Screw connection |
| Stripping length | 8 mm |
| Screw thread | M3 |
| Conductor cross section solid | 0.14 mm ² ... 2.5 mm ² |
| Conductor cross section flexible | 0.14 mm ² ... 2.5 mm ² |
| Conductor cross section AWG | 26 ... 14 |
| Torque | 0.5 Nm ... 0.6 Nm |
| | 5 lb _f -in. ... 7 lb _f -in. |

Standards and Regulations

| | |
|-----------------------|--|
| Designation | Air clearances and creepage distances between the power circuits |
| Standards/regulations | EN 50178 |
| Insulation | Basic insulation |
| Pollution degree | 2 |
| Overvoltage category | III |

Conformance/approvals

| | |
|-------------|--------------|
| Designation | UL approval |
| Certificate | NLDX.E228652 |

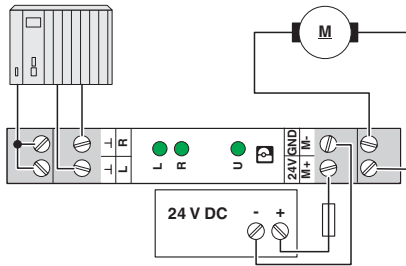
Environmental Product Compliance

| | |
|------------|---|
| REACH SVHC | Lead 7439-92-1 |
| China RoHS | Environmentally Friendly Use Period = 50 years |
| | For details about hazardous substances go to tab "Downloads", Category "Manufacturer's declaration" |

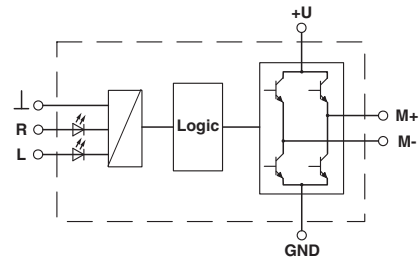
Reversing load relay - ELR W1/ 6-24DC - 2982090

Drawings

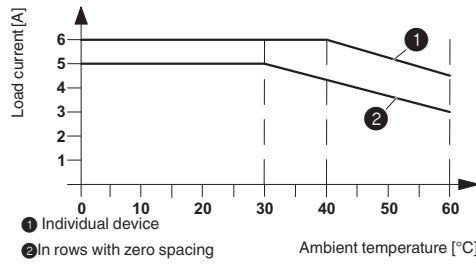
Connection diagram



Block diagram



Diagram



Classifications

eCl@ss

| | |
|---------------|----------|
| eCl@ss 10.0.1 | 27371014 |
| eCl@ss 11.0 | 27371014 |
| eCl@ss 4.0 | 27371100 |
| eCl@ss 4.1 | 27371100 |
| eCl@ss 5.0 | 27371600 |
| eCl@ss 5.1 | 27371600 |
| eCl@ss 6.0 | 27371000 |
| eCl@ss 7.0 | 27371014 |
| eCl@ss 9.0 | 27371014 |

ETIM

| | |
|----------|----------|
| ETIM 4.0 | EC002055 |
| ETIM 6.0 | EC002055 |
| ETIM 7.0 | EC002055 |

UNSPSC

| | |
|-------------|----------|
| UNSPSC 6.01 | 30211915 |
|-------------|----------|

Reversing load relay - ELR W1/ 6-24DC - 2982090

Classifications

UNSPSC

| | |
|---------------|----------|
| UNSPSC 7.0901 | 39121514 |
| UNSPSC 11 | 39121514 |
| UNSPSC 12.01 | 39121514 |
| UNSPSC 13.2 | 39121514 |
| UNSPSC 18.0 | 39122333 |
| UNSPSC 19.0 | 39122333 |
| UNSPSC 20.0 | 39122333 |
| UNSPSC 21.0 | 39122333 |

Approvals

Approvals

Approvals

UL Listed / cUL Listed / EAC / cULus Listed

Ex Approvals

Approval details

| | | | |
|-----------|--|---|---------------|
| UL Listed | | http://database.ul.com/cgi-bin/XYV/template/LISEXT/1FRAME/index.htm | FILE E 228652 |
|-----------|--|---|---------------|

| | | | |
|------------|--|---|---------------|
| cUL Listed | | http://database.ul.com/cgi-bin/XYV/template/LISEXT/1FRAME/index.htm | FILE E 228652 |
|------------|--|---|---------------|

| | | |
|-----|--|-----------------|
| EAC | | TR_TS_D_00573_c |
|-----|--|-----------------|

| | |
|--------------|--|
| cULus Listed | |
|--------------|--|

