

# TC-2KS50-DI32-2EX-PR-CS - Module carrier



2904676

<https://www.phoenixcontact.com/us/products/2904676>

Please be informed that the data shown in this PDF document is generated from our online catalog. Please find the complete data in the user documentation. Our general terms of use for downloads are valid.



Termination Carrier for redundantly connecting 16 two-channel MACX Analog Ex i NAMUR signal conditioners to digital input cards of the Yokogawa Centum VP controller, via two KS50 connectors, 50-pos. Suitable for Yokogawa ADV151 and ADV161 cards.

## Your advantages

- Mechanically decoupled, passive PCB
- Redundant system connection, 50-pos. (KS/AKB-compatible)
- Simple or redundant supply (decoupled from diode, protected against polarity reversal) and monitoring function implemented via separate DIN rail module
- Robust aluminum profile with integrated DIN rail
- Side parts with integrated end clamps
- Cable sets for signal connection are supplied as standard and do not have to be ordered separately

## Commercial data

Item number	2904676
Packing unit	1 pc
Minimum order quantity	1 pc
Note	Made to order (non-returnable)
Product key	CK271C
Catalog page	Page 525 (C-5-2017)
GTIN	4046356882262
Weight per piece (including packing)	1,800 g
Weight per piece (excluding packing)	1,800 g
Country of origin	DE

# TC-2KS50-DI32-2EX-PR-CS - Module carrier



2904676

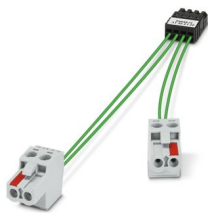
<https://www.phoenixcontact.com/us/products/2904676>

## Set consists of

### TC-C-MAX2-SC-31322122 - Cable set

2904674

<https://www.phoenixcontact.com/us/products/2904674>



Cable set for signal transmission on the Termination Carrier for two-channel modules or modules with double output from the MACX Analog Ex series. Connection of terminal points 3.1 and 3.2 as well as 2.1 and 2.2 (signal transmission) to the signal PCB.

---

### TC-C-PTB3-SC-SET1 - Cable set

2905216

<https://www.phoenixcontact.com/us/products/2905216>



Cable set for TC-MACX-MCR-PTB power and fault signaling module (Item No. 2904673), for use on the Termination Carrier for signal conditioners from the MACX Analog Ex series.

# TC-2KS50-DI32-2EX-PR-CS - Module carrier



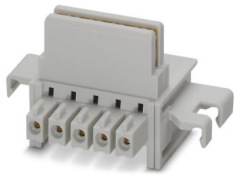
2904676

<https://www.phoenixcontact.com/us/products/2904676>

## ME 17,5 TBUS 1,5/ 5-ST-3,81 GY - DIN rail bus connectors

1090049

<https://www.phoenixcontact.com/us/products/1090049>



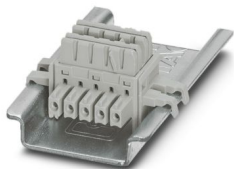
DIN rail connector, color: gray, nominal current: 8 A (parallel contacts), rated voltage (III/2): 125 V, number of positions: 5, pitch: 3.81 mm, mounting: DIN rail mounting, locking: without, mounting: without, type of packaging: packed in cardboard, Item with gold-plated contacts, bus connectors for connecting with electronics housings, 5 parallel contacts

---

## ME 6,2 TBUS-2 1,5/5-ST-3,81 GY - DIN rail bus connectors

2695439

<https://www.phoenixcontact.com/us/products/2695439>



DIN rail connector (TBUS), 5-pos., for bridging the supply voltage, can be snapped onto NS 35/... DIN rail in accordance with EN 60715

# TC-2KS50-DI32-2EX-PR-CS - Module carrier



2904676

<https://www.phoenixcontact.com/us/products/2904676>

## Technical data

### Notes

General	For proper use, the specifications of the installation directive (see Downloads) must be observed. For applications or use with third-party products, the specifications, and the safety and warning instructions of the respective third-party manufacturer must also be met.
---------	--

### Product properties

Product type	Module carrier
Insulation characteristics	
Insulation	Basic insulation
Insulation characteristics: Air clearances and creepage distances	
Insulation	Basic insulation

### Electrical properties

Max. permissible current	1 A (Signal/channel)
Nominal voltage $U_N$	< 30 V DC (Per signal/channel)
Air clearances and creepage distances	
Rated insulation voltage	50 V
Rated surge voltage	0.5 kV
Supported controller YOKOGAWA CENTUM VP	
Suitable I/O card	ADV151
	ADV161

### Supply

Designation	Power module
Note	Supply and error message via 2904673 TC-MACX-MCR-PTB
Fuse	2x 2.5 A on PCB, slow-blow (replaceable)
Input voltage	24 V DC
Input voltage range	19.2 V DC ... 30 V DC
Input current	≤ 2 A
Redundant supply	yes, decoupled from diodes
Polarization and surge protection	Yes
Output name	Switching output
Contact switching type	1 N/C contact (alarm = open)
Maximum switching voltage	50 V DC (0.3 A)
	30 V DC (2 A)
	33 V AC (2 A)

### Connection data

#### Power supply

# TC-2KS50-DI32-2EX-PR-CS - Module carrier



2904676

<https://www.phoenixcontact.com/us/products/2904676>

Connection method	Screw connection
Stripping length	7 mm
Number of connections	1
Number of positions	6
Conductor cross section rigid	0.14 mm² ... 2.5 mm²
Conductor cross section flexible	0.14 mm² ... 2.5 mm²
Conductor cross section AWG	24 ... 12

## Controller level

Connection method	Yokogawa KS-compatible
Number of connections	2
Number of positions	50

## Signaling

Status display	1 x red LED (error) 2x green LEDs (PWR1 and PWR2)
----------------	--

## Dimensions

Width	242 mm
Height	170 mm
Depth	159.5 mm

## Material specifications

Flammability rating according to UL 94	V0
--	----

## Environmental and real-life conditions

### Ambient conditions

Degree of protection	IP00
Ambient temperature (operation)	-20 °C ... 60 °C (Please observe module specifications)
Ambient temperature (storage/transport)	-40 °C ... 80 °C
Altitude	≤ 2000 m
Permissible humidity (operation)	5 % ... 95 % (non-condensing)
Shock	15g, according to IEC 60068-2-27
Vibration (operation)	2g, according to IEC 60068-2-6

## Approvals

### UL, USA/Canada

Identification	UL 61010 Listed Class I, Div. 2, Groups A, B, C, D T4 Class I, Zone 2, Group IIC
----------------	--

## Standards and regulations

### Air clearances and creepage distances

Standards/regulations	DIN EN 50178
-----------------------	--------------

# TC-2KS50-DI32-2EX-PR-CS - Module carrier



2904676

<https://www.phoenixcontact.com/us/products/2904676>

## Mounting

Mounting type	DIN rail mounting
Assembly instructions	No end clamp
Mounting position	vertical, horizontal

# TC-2KS50-DI32-2EX-PR-CS - Module carrier



2904676

<https://www.phoenixcontact.com/us/products/2904676>

## Classifications

### ECLASS

ECLASS-11.0	27141152
ECLASS-13.0	27141152
ECLASS-12.0	27141152

### ETIM

ETIM 9.0	EC002780
----------	----------

### UNSPSC

UNSPSC 21.0	39121400
-------------	----------

# TC-2KS50-DI32-2EX-PR-CS - Module carrier



2904676  
<https://www.phoenixcontact.com/us/products/2904676>

## Environmental product compliance

REACH SVHC	Lead 7439-92-1
China RoHS	Environmentally Friendly Use Period = 50 years
	For information on hazardous substances, refer to the manufacturer's declaration available under "Downloads"

Phoenix Contact 2024 © - all rights reserved  
<https://www.phoenixcontact.com>

Phoenix Contact USA  
586 Fulling Mill Road  
Middletown, PA 17057, United States  
(+717) 944-1300  
[info@phoenixcon.com](mailto:info@phoenixcon.com)