

RIF-0-RPT-12DC/ 1 - Relay Module



2903362

<https://www.phoenixcontact.com/us/products/2903362>

Please be informed that the data shown in this PDF document is generated from our online catalog. Please find the complete data in the user documentation. Our general terms of use for downloads are valid.



Preamsembled relay module with Push-in connection, consisting of: relay base with ejector and power contact relay. Contact switching type: 1 N/O contact. Input voltage: 12 V DC

Product description

The pluggable electromechanical and solid-state relays in the RIFLINE complete product range and the base are recognized and approved in accordance with UL 508. The relevant approvals can be called up at the individual components in question.

Commercial data

| | |
|--------------------------------------|---------------------|
| Item number | 2903362 |
| Packing unit | 10 pc |
| Minimum order quantity | 10 pc |
| Sales key | C465 |
| Product key | CK6528 |
| Catalog page | Page 319 (C-5-2019) |
| GTIN | 4046356731959 |
| Weight per piece (including packing) | 24.68 g |
| Weight per piece (excluding packing) | 24.68 g |
| Customs tariff number | 85364110 |
| Country of origin | CZ |

RIF-0-RPT-12DC/ 1 - Relay Module



2903362

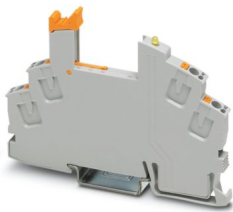
<https://www.phoenixcontact.com/us/products/2903362>

Set consists of

RIF-0-BPT/1 - Relay base

2901873

<https://www.phoenixcontact.com/us/products/2901873>

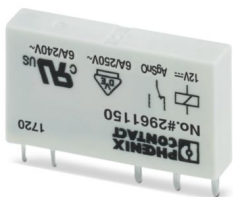


RIF-0... relay base, for miniature power relay with 1 N/O contact or solid-state relays of the same design, push-in connection, for mounting on NS 35/7,5

REL-MR- 12DC/21 - Single relay

2961150

<https://www.phoenixcontact.com/us/products/2961150>



Plug-in miniature power relay, with power contact, 1 changeover contact, input voltage 12 V DC

RIF-0-RPT-12DC/ 1 - Relay Module



2903362

<https://www.phoenixcontact.com/us/products/2903362>

Technical data

Product properties

| | |
|-------------------------|--------------------------------|
| Product type | Relay Module |
| Product family | RIFLINE complete |
| Application | Universal |
| Operating mode | 100% operating factor |
| Mechanical service life | approx. 2×10^7 cycles |

Insulation characteristics

| | |
|------------|----------------|
| Insulation | safe isolation |
|------------|----------------|

Insulation characteristics

| | |
|----------------------|----------------|
| Insulation | safe isolation |
| Overvoltage category | III |
| Pollution degree | 2 |

Electrical properties

| | |
|---|--|
| Service life electrical | see diagram |
| Maximum power dissipation for nominal condition | 0.19 W |
| Test voltage (Winding/contact) | 4 kV _{rms} (50 Hz, 1 min., winding/contact) |
| Rated insulation voltage | 250 V AC |
| Rated surge voltage | 6 kV |

Input data

Coil side

| | |
|---|------------------------------|
| Nominal input voltage U_N | 12 V DC |
| Input voltage range | 9.6 V DC ... 18 V DC (20 °C) |
| Input voltage range in reference to U_N | see diagram |
| Drive and function | monostable |
| Drive (polarity) | polarized |
| Typical input current at U_N | 16 mA |
| Typical response time | 5 ms |
| Typical release time | 8 ms |
| Coil voltage | 12 V DC |
| Protective circuit | Freewheeling diode |
| Operating voltage display | Yellow LED |

Output data

Switching

| | |
|------------------------|----------------|
| Contact switching type | 1 N/O contact |
| Type of switch contact | Single contact |
| Contact material | AgSnO |

RIF-0-RPT-12DC/ 1 - Relay Module



2903362

<https://www.phoenixcontact.com/us/products/2903362>

| | |
|--|---------------------------------|
| Maximum switching voltage | 250 V AC/DC |
| Minimum switching voltage | 5 V (100 mA) |
| Limiting continuous current | 6 A |
| Maximum inrush current | 10 A (4 s) |
| Min. switching current | 10 mA (12 V) |
| Interrupting rating (ohmic load) max. | 140 W (24 V DC) |
| | 20 W (48 V DC) |
| | 18 W (60 V DC) |
| | 23 W (110 V DC) |
| | 40 W (220 V DC) |
| | 1500 VA (250 V AC) |
| Utilization category CB Scheme (IEC 60947-5-1) | AC15, 3 A/250 V (N/O contact) |
| | AC15, 1 A/250 V (N/C contact) |
| | DC13, 1.5 A/24 V (N/O contact) |
| | DC13, 0.2 A/110 V (N/O contact) |
| | DC13, 0.1 A/220 V (N/O contact) |

Connection data

| | |
|----------------------------------|--|
| Connection method | Push-in connection |
| Stripping length | 8 mm |
| Conductor cross section rigid | 0.14 mm ² ... 1.5 mm ² |
| Conductor cross section flexible | 0.14 mm ² ... 1.5 mm ² |
| | 0.14 mm ² ... 1.5 mm ² (Ferrule with plastic sleeve) |
| Conductor cross section AWG | 24 ... 16 |

Dimensions

| | |
|--------|--------|
| Width | 6.2 mm |
| Height | 93 mm |
| Depth | 66 mm |

Material specifications

| | |
|--|-----------------|
| Color | gray (RAL 7042) |
| Flammability rating according to UL 94 | V2 (Housing) |

Environmental and real-life conditions

Ambient conditions

| | |
|---|-------------------|
| Degree of protection (Relay base) | IP20 (Relay base) |
| Degree of protection (Relay) | RT III (Relay) |
| Ambient temperature (operation) | -40 °C ... 60 °C |
| Ambient temperature (storage/transport) | -40 °C ... 85 °C |

Approvals

Corrosive gas test

| | |
|----------------|----------------------------|
| Identification | ISA-S71.04. G3 Harsh Group |
|----------------|----------------------------|

RIF-0-RPT-12DC/ 1 - Relay Module



2903362

<https://www.phoenixcontact.com/us/products/2903362>

| | |
|--|---------------|
| | EN 60068-2-60 |
|--|---------------|

Standards and regulations

| | |
|-----------------------|---------------|
| Standards/regulations | IEC 60947-5-1 |
|-----------------------|---------------|

Mounting

| | |
|-----------------------|---------------------------|
| Mounting type | DIN rail mounting |
| Assembly instructions | in rows with zero spacing |
| Mounting position | any |

RIF-0-RPT-12DC/ 1 - Relay Module



2903362

<https://www.phoenixcontact.com/us/products/2903362>

Classifications

ECLASS

| | |
|-------------|----------|
| ECLASS-11.0 | 27371601 |
| ECLASS-12.0 | 27371601 |
| ECLASS-13.0 | 27371601 |

ETIM

| | |
|----------|----------|
| ETIM 9.0 | EC001437 |
|----------|----------|

UNSPSC

| | |
|-------------|----------|
| UNSPSC 21.0 | 39122300 |
|-------------|----------|

RIF-0-RPT-12DC/ 1 - Relay Module



2903362

<https://www.phoenixcontact.com/us/products/2903362>

Environmental product compliance

| | |
|------------|--|
| REACH SVHC | Lead 7439-92-1 |
| China RoHS | Environmentally Friendly Use Period = 50 years |
| | For information on hazardous substances, refer to the manufacturer's declaration available under "Downloads" |

Phoenix Contact 2024 © - all rights reserved
<https://www.phoenixcontact.com>

Phoenix Contact USA
586 Fulling Mill Road
Middletown, PA 17057, United States
(+717) 944-1300
info@phoenixcon.com