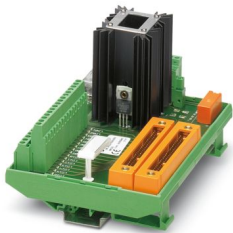


Please be informed that the data shown in this PDF document is generated from our online catalog. Please find the complete data in the user documentation. Our general terms of use for downloads are valid.



16-channel digital output module with screw connection and redundant voltage supply. Suitable for Yokogawa SDV 541 card.

Commercial data

Item number	2900175
Packing unit	1 pc
Minimum order quantity	1 pc
Note	Made to order (non-returnable)
Sales key	C421
Product key	CK21A4
Catalog page	Page 523 (C-5-2017)
GTIN	4046356484039
Weight per piece (including packing)	593.6 g
Weight per piece (excluding packing)	570 g
Customs tariff number	85369010
Country of origin	DE

UM-2KS50/16DO/RS/MKDS - Output module



2900175

<https://www.phoenixcontact.com/us/products/2900175>

Technical data

Product properties

Product type	Interface module
Number of positions	50
No. of channels	16

Insulation characteristics

Insulation	Functional insulation
------------	-----------------------

Insulation characteristics: Air clearances and creepage distances

Insulation	Functional insulation
Overvoltage category	II
Pollution degree	2

Electrical properties

Nominal voltage U_N	24 V DC $\pm 5\%$
Max. current carrying capacity per branch	100 mA
Max. total current of voltage supply	6.3 AT (F150, F151) plug-in fuse (5x20, 6.3 A), DIN 41662

Air clearances and creepage distances

Rated insulation voltage	50 V
Rated surge voltage	0.5 kV (1.2/50 μ s)

Supported controller YOKOGAWA ProSafe-RS

Suitable I/O card	SDV541
-------------------	--------

Connection data

Field level

Connection method	Screw connection
Number of positions	32
Conductor cross section rigid	0.2 mm ² ... 2.5 mm ²
Conductor cross section flexible	0.2 mm ² ... 1.5 mm ²
Conductor cross section AWG	24 ... 14

Controller level

Connection method	Yokogawa KS-compatible
Number of connections	2
Number of positions	50
Tightening torque	0.5 Nm

Supply

Connection method	pluggable
Number of connections	1
Number of positions	6

UM-2KS50/16DO/RS/MKDS - Output module



2900175

<https://www.phoenixcontact.com/us/products/2900175>

Signaling

Status display	Green LED (supply), yellow LED (channel)
Status display present	Yes

Dimensions

Item dimensions

Width	161.6 mm
Height	111.8 mm
Depth	93.05 mm

Material specifications

Color	green (RAL 6021)
-------	------------------

Environmental and real-life conditions

Ambient conditions

Degree of protection	IP00
Degree of protection (Installation location)	≥ IP54 (Installation location)
Ambient temperature (operation)	-20 °C ... 70 °C
Altitude	< 2000 m

Standards and regulations

Air clearances and creepage distances

Standards/regulations	DIN EN 50178
-----------------------	--------------

Mounting

Mounting type	DIN rail mounting
Mounting position	any

Notes

General	Voltage monitoring on the module does not work in combination with upstream HESILED fuse terminal blocks with integrated LED display.
General	For proper use, the specifications of the installation directive (see Downloads) must be observed. For applications or use with third-party products, the specifications, and the safety and warning instructions of the respective third-party manufacturer must also be met.

UM-2KS50/16DO/RS/MKDS - Output module



2900175

<https://www.phoenixcontact.com/us/products/2900175>

Classifications

ECLASS

ECLASS-11.0	27141152
ECLASS-12.0	27141152
ECLASS-13.0	27141152

ETIM

ETIM 9.0	EC002780
----------	----------

UNSPSC

UNSPSC 21.0	39121400
-------------	----------

UM-2KS50/16DO/RS/MKDS - Output module



2900175

<https://www.phoenixcontact.com/us/products/2900175>

Environmental product compliance

REACH SVHC	Lead 7439-92-1
China RoHS	Environmentally Friendly Use Period = 50 years
	For information on hazardous substances, refer to the manufacturer's declaration available under "Downloads"

Phoenix Contact 2024 © - all rights reserved
<https://www.phoenixcontact.com>

Phoenix Contact USA
586 Fulling Mill Road
Middletown, PA 17057, United States
(+717) 944-1300
info@phoenixcon.com