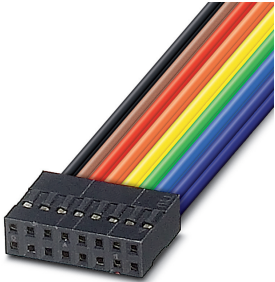


Power plug - BL2-2,54/16-ST - 2896335


Please be informed that the data shown in this PDF Document is generated from our Online Catalog. Please find the complete data in the user's documentation. Our General Terms of Use for Downloads are valid (<http://phoenixcontact.com/download>)



Power connector for DIN rail bus connector with 16 free cable ends with a cross section of 0.25 mm², 500 mm long, female contacts



Key Commercial Data

Packing unit	1 pc
Minimum order quantity	50 pc
GTIN	 4 046356 098410
GTIN	4046356098410
Weight per Piece (excluding packing)	36.690 g
Custom tariff number	85369010
Country of origin	Taiwan

Technical data

General

Housing type	DIN rail housing for use in distribution boards in accordance with DIN 43880
Housing material	Polyamide
Color (RAL)	black

Technical data

Connection in acc. with standard	CUL
Nominal voltage U_N	60 V
Nominal current I_N	2 A
Indicator1	CUL1

Power plug - BL2-2,54/16-ST - 2896335

Technical data

Technical data

Number of positions	16
---------------------	----

Standards and Regulations

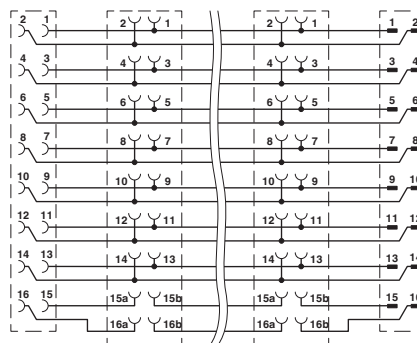
Connection in acc. with standard	CUL
----------------------------------	-----

Environmental Product Compliance

China RoHS	Environmentally friendly use period: unlimited = EFUP-e
	No hazardous substances above threshold values

Drawings

Circuit diagram



Classifications

eCl@ss

eCl@ss 10.0.1	27440309
eCl@ss 4.0	27260700
eCl@ss 4.1	27260700
eCl@ss 5.0	27260700
eCl@ss 5.1	27260700
eCl@ss 6.0	27260700
eCl@ss 7.0	27440309
eCl@ss 9.0	27440309

ETIM

ETIM 3.0	EC001121
ETIM 4.0	EC002638
ETIM 6.0	EC002638
ETIM 7.0	EC002638

Power plug - BL2-2,54/16-ST - 2896335

Classifications

UNSPSC

UNSPSC 6.01	30211810
UNSPSC 7.0901	39121409
UNSPSC 11	39121409
UNSPSC 12.01	39121409
UNSPSC 13.2	39121409
UNSPSC 18.0	39121409
UNSPSC 19.0	39121409
UNSPSC 20.0	39121409
UNSPSC 21.0	39121409