

CB 1/10-1/10 UT-BE - Base element

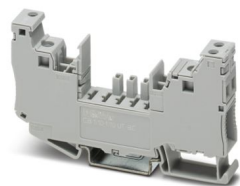


2801305

<https://www.phoenixcontact.com/us/products/2801305>

Please be informed that the data shown in this PDF document is generated from our online catalog. Please find the complete data in the user documentation. Our general terms of use for downloads are valid.

Base element with screw connection technology for CB... device circuit breakers



Your advantages

- Fast installation with reduced wiring work with bridging options
- Can be extended at any time with the modular design
- Reliable installation with screw connection technology
- Clear assignment of protective plug with coding options

Commercial data

Item number	2801305
Packing unit	10 pc
Minimum order quantity	10 pc
Sales key	CL04
Product key	CLA193
Catalog page	Page 396 (C-4-2019)
GTIN	4046356769198
Weight per piece (including packing)	44.47 g
Weight per piece (excluding packing)	39.42 g
Customs tariff number	85366990
Country of origin	ID

CB 1/10-1/10 UT-BE - Base element



2801305

<https://www.phoenixcontact.com/us/products/2801305>

Technical data

Product properties

Type	Base element, DIN rail mounting
Product type	Base element
Product family	CB BE

Electrical properties

Nominal voltage U_N	277 V
-----------------------	-------

General

Rated voltage	277 V (AC)
	80 V (DC)
Rated insulation voltage U_i	277 V AC
Rated current I_N	16 A
Rated surge voltage	2.5 kV
Insertion/withdrawal cycles	100

Indicator/remote signaling

Connection name	Remote indication circuit
Switching function	Changeover contact

Connection data

Connection method	Screw connection
-------------------	------------------

Connection 1

Connection method	Screw connection
Tightening torque	1.2 Nm
Stripping length	10 mm
Conductor cross section flexible min.	0.5 mm ²
Conductor cross section flexible max.	16 mm ²
Conductor cross section, rigid min.	0.5 mm ²
Conductor cross section, rigid max.	16 mm ²

Connection 2

Connection method	Screw connection
Tightening torque	1.2 Nm
Stripping length	10 mm
Conductor cross section flexible min.	0.5 mm ²
Conductor cross section flexible max.	16 mm ²
Conductor cross section, rigid min.	0.5 mm ²
Conductor cross section, rigid max.	16 mm ²

Remote indication circuit

Connection method	Screw connection
Tightening torque	0.5 Nm

CB 1/10-1/10 UT-BE - Base element

2801305

<https://www.phoenixcontact.com/us/products/2801305>



Stripping length	9 mm
Conductor cross section flexible	0.14 mm² ... 4 mm²
Conductor cross section rigid	0.14 mm² ... 4 mm²
Conductor cross section AWG	26 ... 16
Conductor cross section, flexible, with ferrule, with plastic sleeve	0.14 mm² ... 2.5 mm²

Dimensions

Dimensional drawing	
Width	12.3 mm
Height	90.8 mm
Depth	70 mm

Material specifications

Color	gray (RAL 7042)
	black (RAL 9005)
Flammability rating according to UL 94	V0

Mechanical properties

Mechanical data	
Open side panel	No

Environmental and real-life conditions

Ambient conditions	
Degree of protection	IP30 (Actuation area)
Ambient temperature (operation)	-30 °C ... 60 °C

Standards and regulations

Standards/specifications	UL 1059
--------------------------	---------

Mounting

Mounting type	DIN rail: 35 mm
---------------	-----------------

CB 1/10-1/10 UT-BE - Base element



2801305

<https://www.phoenixcontact.com/us/products/2801305>

Classifications

ECLASS

ECLASS-11.0	27140401
ECLASS-12.0	27140401
ECLASS-13.0	27140401

ETIM

ETIM 9.0	EC003538
----------	----------

UNSPSC

UNSPSC 21.0	39121400
-------------	----------

CB 1/10-1/10 UT-BE - Base element



2801305

<https://www.phoenixcontact.com/us/products/2801305>

Environmental product compliance

China RoHS	Environmentally friendly use period: unlimited = EFUP-e
	No hazardous substances above threshold values

Phoenix Contact 2024 © - all rights reserved
<https://www.phoenixcontact.com>

Phoenix Contact USA
586 Fulling Mill Road
Middletown, PA 17057, United States
(+717) 944-1300
info@phoenixcon.com