

Bus coupler - FLM BK PB M12 DI 8 M12-EF - 2773377

Please be informed that the data shown in this PDF Document is generated from our Online Catalog. Please find the complete data in the user's documentation. Our General Terms of Use for Downloads are valid (<http://phoenixcontact.com/download>)



The PROFIBUS bus coupler opens a local bus for up to 16 standard or PCP devices. Additional functions: I&M functions, 8 digital inputs, channel-specific diagnostics, dynamic configuration, short-circuit/overload protection, M12 fast connection technology.

Product Description


Fieldline modular bus coupler for PROFIBUS with four digital inputs

Your advantages

- ✓ PROFIBUS
- ✓ 8 inputs, 24 V DC
- ✓ M12 connection technology with SPEEDCON fast locking system



Key Commercial Data

| | |
|--------------------------------------|---|
| Packing unit | 1 pc |
| GTIN |  4 046356 583879 |
| GTIN | 4046356583879 |
| Weight per Piece (excluding packing) | 340.000 g |
| Custom tariff number | 85176200 |
| Country of origin | China |

Technical data

Note

| | |
|-------------------------|---|
| Utilization restriction | EMC: class A product, see manufacturer's declaration in the download area |
|-------------------------|---|

Dimensions

| | |
|-------|-------|
| Width | 70 mm |
|-------|-------|

Bus coupler - FLM BK PB M12 DI 8 M12-EF - 2773377

Technical data

Dimensions

| | |
|--------------------|--------|
| Height | 178 mm |
| Depth | 50 mm |
| Drill hole spacing | 168 mm |

Ambient conditions

| | |
|--|---|
| Ambient temperature (operation) | -25 °C ... 60 °C |
| Ambient temperature (storage/transport) | -25 °C ... 85 °C |
| Permissible humidity (storage/transport) | 95 % |
| Air pressure (operation) | 80 kPa ... 106 kPa (up to 2000 m above sea level) |
| Air pressure (storage/transport) | 70 kPa ... 106 kPa (up to 3000 m above sea level) |
| Degree of protection | IP65/IP67 |

General

| | |
|---------------|---|
| Mounting type | Wall mounting |
| Color | anthracite |
| Net weight | 280 g |
| Mounting type | Wall mounting, optionally on mounting plate |

Interfaces

| | |
|------------------------------|------------------------|
| Designation | PROFIBUS DP |
| Connection method | M12 connector, B-coded |
| Designation connection point | Copper cable |
| Transmission speed | 9.6 kbps ... 12 Mbps |
| Address area assignment | 1 ... 126, adjustable |
| Number of positions | 5 |

Local bus gateway

| | |
|----------------------------------|------------------------------------|
| Designation | Local bus gateway |
| Connection method | M12 connector, B-coded |
| Transmission speed | 500 kbaud/2 Mbaud, can be selected |
| Max. number of local bus devices | 16 |
| Max. length of local bus | 20 m |

Power supply for module electronics

| | |
|----------------------|--|
| Connection method | M12 connector |
| Designation | U_L |
| Supply voltage | 24 V DC |
| Supply voltage range | 18 V DC ... 30 V DC (including ripple) |

Fieldline potentials

| | |
|----------------------|---------|
| Voltage supply U_L | 24 V DC |
|----------------------|---------|

Bus coupler - FLM BK PB M12 DI 8 M12-EF - 2773377

Technical data

Fieldline potentials

| | |
|--------------------------------|--|
| Power supply at U_L | max. 4 A |
| Current consumption from U_L | max. 100 mA (At 2 Mbaud) |
| | typ. 75 mA (At 2 Mbaud) |
| | max. 100 mA (At 500 kBaud) |
| | typ. 75 mA (At 500 kBaud) |
| Voltage supply U_S | 24 V DC |
| Power supply at U_S | max. 4 A |
| Current consumption from U_S | typ. 15 mA (plus power supply for sensors) |
| | max. 600 mA |

Digital inputs

| | |
|--------------------------------|-----------------------------|
| Input name | Digital inputs |
| Description of the input | IEC 61131-2 type 1 |
| Connection method | M12 connector |
| Connection technology | 2-, 3-, 4-conductor |
| Number of inputs | 8 (double-occupancy) |
| Protective circuit | Reverse polarity protection |
| Nominal input voltage U_{IN} | 24 V DC |
| Filter time | 3 ms |
| Input voltage | 24 V DC |
| Input voltage range "0" signal | -30 V DC ... 5 V DC |
| Input voltage range "1" signal | 13 V DC ... 30 V DC |

Electrical isolation

| | |
|--------------|-----------------|
| Test section | To I/O 500 V AC |
|--------------|-----------------|

Standards and Regulations

| | |
|----------------------------------|---------------------------------------|
| Connection in acc. with standard | CUL |
| Protection class | III (IEC 61140, EN 61140, VDE 0140-1) |

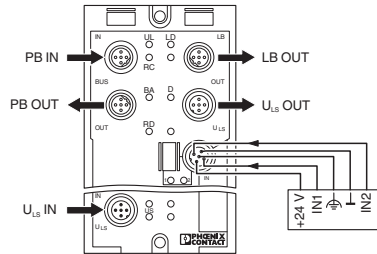
Environmental Product Compliance

| | |
|------------|---|
| REACH SVHC | Lead 7439-92-1 |
| China RoHS | Environmentally friendly use period: unlimited = EFUP-e |
| | No hazardous substances above threshold values |

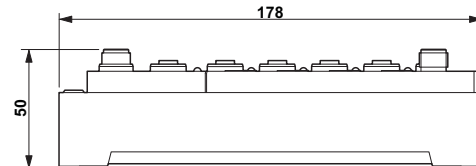
Drawings

Bus coupler - FLM BK PB M12 DI 8 M12-EF - 2773377

Connection diagram



Dimensional drawing



Classifications

eCl@ss

| | |
|---------------|----------|
| eCl@ss 10.0.1 | 27242608 |
| eCl@ss 11.0 | 27242608 |
| eCl@ss 4.0 | 27240400 |
| eCl@ss 4.1 | 27240400 |
| eCl@ss 5.0 | 27242200 |
| eCl@ss 5.1 | 27242600 |
| eCl@ss 6.0 | 27242600 |
| eCl@ss 7.0 | 27242608 |
| eCl@ss 9.0 | 27242608 |

ETIM

| | |
|----------|----------|
| ETIM 2.0 | EC001434 |
| ETIM 3.0 | EC001599 |
| ETIM 4.0 | EC001599 |
| ETIM 6.0 | EC001604 |
| ETIM 7.0 | EC001604 |

UNSPSC

| | |
|---------------|----------|
| UNSPSC 6.01 | 43172015 |
| UNSPSC 7.0901 | 43201404 |
| UNSPSC 11 | 43172015 |
| UNSPSC 12.01 | 43201404 |
| UNSPSC 13.2 | 32151602 |
| UNSPSC 18.0 | 32151602 |
| UNSPSC 19.0 | 32151602 |
| UNSPSC 20.0 | 32151602 |

Bus coupler - FLM BK PB M12 DI 8 M12-EF - 2773377

Classifications

UNSPSC

| | |
|-------------|----------|
| UNSPSC 21.0 | 32151602 |
|-------------|----------|

Approvals

Approvals

Approvals

UL Recognized / cUL Recognized / cULus Recognized


Ex Approvals

UL Recognized / cUL Recognized / cULus Recognized

Approval details

| | | | |
|---------------|---|---|---------------|
| UL Recognized |  | http://database.ul.com/cgi-bin/XYV/template/LISEXT/1FRAME/index.htm | FILE E 140324 |
|---------------|---|---|---------------|

| | | | |
|----------------|---|---|---------------|
| cUL Recognized |  | http://database.ul.com/cgi-bin/XYV/template/LISEXT/1FRAME/index.htm | FILE E 140324 |
|----------------|---|---|---------------|

| | | | |
|------------------|---|--|--|
| cULus Recognized |  | | |
|------------------|---|--|--|
