

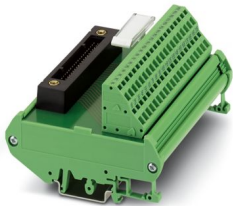
FLKM-KS40/YCS/ZFKDS - Passive module



2314723

<https://www.phoenixcontact.com/us/products/2314723>

Please be informed that the data shown in this PDF document is generated from our online catalog. Please find the complete data in the user documentation. Our general terms of use for downloads are valid.



Universal interface module with 1:1 connection between 40-pos. system connection and spring-cage terminal block connection.

Commercial data

Item number	2314723
Packing unit	1 pc
Minimum order quantity	1 pc
Note	Made to order (non-returnable)
Product key	CK21A4
GTIN	4046356155007
Weight per piece (including packing)	211.2 g
Weight per piece (excluding packing)	211.2 g
Country of origin	DE

FLKM-KS40/YCS/ZFKDS - Passive module



2314723

<https://www.phoenixcontact.com/us/products/2314723>

Technical data

Product properties

Product type	Interface module
No. of channels	8
	16
Operating mode	100% operating factor

Insulation characteristics

Insulation	Functional insulation
------------	-----------------------

Insulation characteristics: Air clearances and creepage distances

Insulation	Functional insulation
Overvoltage category	II
Pollution degree	2

Electrical properties

Operating voltage (AC)	≤ 30 V AC
Operating voltage (DC)	≤ 30 V DC
Current (per branch)	≤ 1 A

Air clearances and creepage distances

Rated insulation voltage	50 V
Rated surge voltage	0.5 kV (1.2/50 μ s)

Supported controller YOKOGAWA CS3000 CentumVP

Suitable I/O card	AAB841
	AAI135
	AAI141
	AAI143
	AAI543
	AAI835
	AAI841
	AAR181
	AAT141
	AAV141
	AAV142
	AAV542
	AAP135

Supported controller YOKOGAWA STARDOM

Suitable I/O card	NFAI141
	NFAI43
	NFAI543
	NFAI135

FLKM-KS40/YCS/ZFKDS - Passive module



2314723

<https://www.phoenixcontact.com/us/products/2314723>

	NFAP135
	NFAV141
	NFAV142
	NFAV542
	NFAB841
	NFAI841
	NFAI835

Connection data

Connection 1 (control level)

Connection method	Yokogawa KS-compatible
Number of connections	1
Number of positions	40
Tightening torque	0.5 Nm
Pitch	2.54 mm

Connection 2 (field level)

Connection method	Spring-cage connection
Number of positions	40
Conductor cross section rigid	0.2 mm² ... 2.5 mm²
Conductor cross section flexible	0.2 mm² ... 1.5 mm²
Conductor cross section AWG	24 ... 14

Signaling

Status display present	No
------------------------	----

Dimensions

Item dimensions

Width	112 mm
Height	89.6 mm
Depth	59.7 mm

Environmental and real-life conditions

Ambient conditions

Degree of protection (Module)	IP00
Degree of protection (Installation location)	≤ IP54
Ambient temperature (operation)	-20 °C ... 50 °C
Ambient temperature (storage/transport)	-20 °C ... 70 °C
Altitude	≤ 2000 m

Approvals

UKCA

Certificate	UKCA-compliant
-------------	----------------

FLKM-KS40/YCS/ZFKDS - Passive module



2314723

<https://www.phoenixcontact.com/us/products/2314723>

Standards and regulations

Air clearances and creepage distances

Standards/regulations	EN IEC 60664-1
-----------------------	----------------

Mounting

Mounting type	DIN rail mounting
Mounting position	any

Notes

General	For proper use, the specifications of the installation directive (see Downloads) must be observed. For applications or use with third-party products, the specifications, and the safety and warning instructions of the respective third-party manufacturer must also be met.
---------	--

FLKM-KS40/YCS/ZFKDS - Passive module



2314723

<https://www.phoenixcontact.com/us/products/2314723>

Classifications

ECLASS

ECLASS-11.0	27141152
ECLASS-12.0	27141152
ECLASS-13.0	27141152

ETIM

ETIM 9.0	EC002780
----------	----------

UNSPSC

UNSPSC 21.0	39121400
-------------	----------

FLKM-KS40/YCS/ZFKDS - Passive module



2314723

<https://www.phoenixcontact.com/us/products/2314723>

Environmental product compliance

China RoHS	Environmentally friendly use period: unlimited = EFUP-e
	No hazardous substances above threshold values

Phoenix Contact 2024 © - all rights reserved
<https://www.phoenixcontact.com>

Phoenix Contact USA
586 Fulling Mill Road
Middletown, PA 17057, United States
(+717) 944-1300
info@phoenixcon.com