

ME 17,5 TBUS ADAPTER KMGY - DIN rail bus connectors

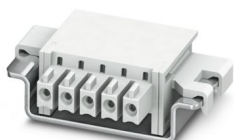


2201757

<https://www.phoenixcontact.com/us/products/2201757>

Please be informed that the data shown in this PDF document is generated from our online catalog. Please find the complete data in the user documentation. Our general terms of use for downloads are valid.

DIN rail bus adapter for ME and ME-MAX, design width: 17.5 mm, 5 parallel positions, color: light gray (similar to RAL 7035)



Your advantages

- Space-saving DIN rail mounting

Commercial data

Item number	2201757
Packing unit	50 pc
Minimum order quantity	50 pc
Sales key	AC08
Product key	ACHACA
Catalog page	Page 39 (NTK-2014)
GTIN	4046356909037
Weight per piece (including packing)	3.636 g
Weight per piece (excluding packing)	3.636 g
Customs tariff number	85366990
Country of origin	DE

ME 17,5 TBUS ADAPTER KMGY - DIN rail bus connectors



2201757

<https://www.phoenixcontact.com/us/products/2201757>

Technical data

Product properties

Product type	DIN rail connector
Number of positions	5
Pitch	3.81 mm

Dimensions

Width	17.5 mm
Pitch	3.81 mm

Material specifications

Color	light grey
Flammability rating according to UL 94	V0
Insulating material	PA
Housing material	Polyamide

ME 17,5 TBUS ADAPTER KMGY - DIN rail bus connectors



2201757

<https://www.phoenixcontact.com/us/products/2201757>

Classifications

ECLASS

ECLASS-11.0	27460201
ECLASS-12.0	27460201
ECLASS-13.0	27460201

ETIM

ETIM 9.0	EC002637
----------	----------

UNSPSC

UNSPSC 21.0	39121400
-------------	----------

ME 17,5 TBUS ADAPTER KMGY - DIN rail bus connectors



2201757

<https://www.phoenixcontact.com/us/products/2201757>

Environmental product compliance

China RoHS	Environmentally friendly use period: unlimited = EFUP-e
	No hazardous substances above threshold values

Phoenix Contact 2024 © - all rights reserved
<https://www.phoenixcontact.com>

Phoenix Contact USA
586 Fulling Mill Road
Middletown, PA 17057, United States
(+717) 944-1300
info@phoenixcon.com