

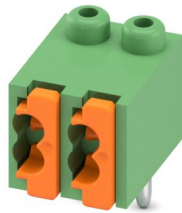
FK-MPT 0,5/ 2-3,5-H - PCB terminal block



1928767

<https://www.phoenixcontact.com/us/products/1928767>

Please be informed that the data shown in this PDF document is generated from our online catalog. Please find the complete data in the user documentation. Our general terms of use for downloads are valid.



PCB terminal block, nominal current: 4 A, rated voltage (III/2): 250 V, nominal cross section: 0.5 mm², number of potentials: 2, number of rows: 1, number of positions per row: 2, product range: FK-MPT 0,5/...-H, pitch: 3.5 mm, connection method: Push-in spring connection, mounting: Wave soldering, conductor/PCB connection direction: 0 °, color: green, Pin layout: Linear pinning, Solder pin [P]: 4 mm, number of solder pins per potential: 1, type of packaging: packed in cardboard

Your advantages

- Time saving push-in connection, tools not required
- Defined contact force ensures that contact remains stable over the long term
- Intuitive operation due to color-coded actuating push button
- Potentials can be easily looped through – ideal for BUS applications
- Small component size for applications where space is at a premium

Commercial data

| | |
|--------------------------------------|---------------------|
| Item number | 1928767 |
| Packing unit | 50 pc |
| Minimum order quantity | 50 pc |
| Sales key | AA11 |
| Product key | AAKBCA |
| Catalog page | Page 403 (C-1-2013) |
| GTIN | 4017918591212 |
| Weight per piece (including packing) | 1.036 g |
| Weight per piece (excluding packing) | 0.656 g |
| Customs tariff number | 85369010 |
| Country of origin | IN |

FK-MPT 0,5/ 2-3,5-H - PCB terminal block



1928767

<https://www.phoenixcontact.com/us/products/1928767>

Technical data

Product properties

| | |
|---------------------------|--------------------------------|
| Type | PC termination block |
| Product line | COMBICON Terminals XS |
| Product type | Printed circuit board terminal |
| Product family | FK-MPT 0,5/...-H |
| Number of positions | 2 |
| Pitch | 3.5 mm |
| Number of connections | 4 |
| Number of rows | 1 |
| Number of potentials | 2 |
| Pin layout | Linear pinning |
| Solder pins per potential | 1 |

Electrical properties

| | |
|-----------------------------|--------|
| Nominal current I_N | 4 A |
| Nominal voltage U_N | 250 V |
| Degree of pollution | 3 |
| Rated voltage (III/3) | 160 V |
| Rated surge voltage (III/3) | 2.5 kV |
| Rated voltage (III/2) | 250 V |
| Rated surge voltage (III/2) | 2.5 kV |
| Rated voltage (II/2) | 250 V |
| Rated surge voltage (II/2) | 2.5 kV |

Connection data

Conductor connection

| | |
|-------------------------------|--|
| Connection method | Push-in spring connection |
| Conductor cross section rigid | 0.12 mm ² ... 0.5 mm ² |
| Conductor cross section AWG | 26 ... 20 |
| Stripping length | 6.5 mm |

Mounting

| | |
|---------------|----------------|
| Mounting type | Wave soldering |
| Pin layout | Linear pinning |

Material specifications

Material data - contact

| | |
|-------------------------|--|
| Note | WEEE/RoHS-compliant, free of whiskers according to IEC 60068-2-82/JEDEC JESD 201 |
| Contact material | Steel/copper |
| Surface characteristics | Tin-plated |

FK-MPT 0,5/ 2-3,5-H - PCB terminal block

1928767

<https://www.phoenixcontact.com/us/products/1928767>

| | |
|---|---------------------------------|
| Metal surface terminal point (top layer) | Tin (5 - 7 μm Sn) |
| Metal surface terminal point (middle layer) | Copper (2 - 3 μm Cu) |
| Metal surface soldering area (top layer) | Tin (5 - 7 μm Sn) |
| Metal surface soldering area (middle layer) | Copper (2 - 3 μm Cu) |

Material data - housing

| | |
|--|--------------|
| Color (Housing) | green (6021) |
| Insulating material | PBT |
| Insulating material group | IIIa |
| CTI according to IEC 60112 | 225 |
| Flammability rating according to UL 94 | V0 |

Material data – actuating element

| | |
|---------------------------|---------------|
| Color (Actuating element) | orange (2003) |
|---------------------------|---------------|

Dimensions

| | |
|-----------------------|---|
| Dimensional drawing |  |
| Pitch | 3.5 mm |
| Width [w] | 7.5 mm |
| Height [h] | 12.5 mm |
| Length [l] | 9.5 mm |
| Installed height | 8.5 mm |
| Solder pin length [P] | 4 mm |
| Pin dimensions | 1 mm |

PCB design

| | |
|---------------|--------|
| Pin spacing | 3.5 mm |
| Hole diameter | 1.2 mm |

Electrical tests

Air clearances and creepage distances |

| | |
|----------------------------------|--------|
| Insulating material group | IIIa |
| Rated insulation voltage (III/3) | 160 V |
| Rated surge voltage (III/3) | 2.5 kV |
| Rated insulation voltage (III/2) | 250 V |
| Rated surge voltage (III/2) | 2.5 kV |
| Rated insulation voltage (II/2) | 250 V |
| Rated surge voltage (II/2) | 2.5 kV |

Environmental and real-life conditions

FK-MPT 0,5/ 2-3,5-H - PCB terminal block



1928767

<https://www.phoenixcontact.com/us/products/1928767>

Ambient conditions

| | |
|---|---|
| Ambient temperature (operation) | -40 °C ... 100 °C (Depending on the current carrying capacity/derating curve) |
| Ambient temperature (storage/transport) | -40 °C ... 70 °C |
| Relative humidity (storage/transport) | 30 % ... 70 % |
| Ambient temperature (assembly) | -5 °C ... 100 °C |

Packaging specifications

| | |
|-------------------|---------------------|
| Type of packaging | packed in cardboard |
|-------------------|---------------------|

FK-MPT 0,5/ 2-3,5-H - PCB terminal block



1928767

<https://www.phoenixcontact.com/us/products/1928767>

Classifications

ECLASS

| | |
|-------------|----------|
| ECLASS-11.0 | 27460101 |
| ECLASS-12.0 | 27460101 |
| ECLASS-13.0 | 27460101 |

ETIM

| | |
|----------|----------|
| ETIM 9.0 | EC002643 |
|----------|----------|

UNSPSC

| | |
|-------------|----------|
| UNSPSC 21.0 | 39121400 |
|-------------|----------|

FK-MPT 0,5/ 2-3,5-H - PCB terminal block



1928767

<https://www.phoenixcontact.com/us/products/1928767>

Environmental product compliance

| | |
|------------|---|
| China RoHS | Environmentally friendly use period: unlimited = EFUP-e |
| | No hazardous substances above threshold values |

Phoenix Contact 2024 © - all rights reserved
<https://www.phoenixcontact.com>

Phoenix Contact USA
586 Fulling Mill Road
Middletown, PA 17057, United States
(+717) 944-1300
info@phoenixcon.com