

# HC-KA-FE - Foot element

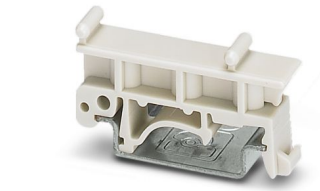
1775240

<https://www.phoenixcontact.com/us/products/1775240>



Please be informed that the data shown in this PDF document is generated from our online catalog. Please find the complete data in the user documentation. Our general terms of use for downloads are valid.

Foot element, for mounting on DIN rail NS 32, DIN rail NS 35/7.5 or DIN rail NS 35/15, can be inserted between basic and side element



## Commercial data

Item number	1775240
Packing unit	10 pc
Minimum order quantity	10 pc
Sales key	BF61
Product key	BF7ADZ
Catalog page	Page 537 (C-2-2019)
GTIN	4017918037970
Weight per piece (including packing)	3.73 g
Weight per piece (excluding packing)	3.668 g
Customs tariff number	85389099
Country of origin	DE

# HC-KA-FE - Foot element

1775240

<https://www.phoenixcontact.com/us/products/1775240>



## Technical data

### Notes

General	At least two foot elements are necessary per adapter.
---------	---

### Product properties

Product type	Mounting material
--------------	-------------------

### Dimensions

Width	10 mm
Height	22.85 mm
Depth	42.45 mm

### Material specifications

Material	PA 6.6
----------	--------

# HC-KA-FE - Foot element



1775240  
<https://www.phoenixcontact.com/us/products/1775240>

## Classifications

### ECLASS

ECLASS-11.0	27440192
ECLASS-12.0	27440192
ECLASS-13.0	27440192

### ETIM

ETIM 9.0	EC002943
----------	----------

### UNSPSC

UNSPSC 21.0	39121400
-------------	----------

# HC-KA-FE - Foot element



1775240  
<https://www.phoenixcontact.com/us/products/1775240>

## Environmental product compliance

China RoHS	Environmentally friendly use period: unlimited = EFUP-e
	No hazardous substances above threshold values

Phoenix Contact 2024 © - all rights reserved  
<https://www.phoenixcontact.com>

Phoenix Contact USA  
586 Fulling Mill Road  
Middletown, PA 17057, United States  
(+717) 944-1300  
[info@phoenixcon.com](mailto:info@phoenixcon.com)