

HCC 4-MC - Plug

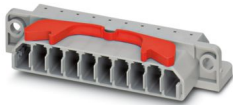


1660669

<https://www.phoenixcontact.com/us/products/1660669>

Please be informed that the data shown in this PDF document is generated from our online catalog. Please find the complete data in the user documentation. Our general terms of use for downloads are valid.

Plug, nom. voltage: 400 V, nominal current: 13.5 A, number of connections: 10, connection method: Crimp connection, Rated cross section: 1.5 mm², cross section: 0.2 mm² - 4 mm², mounting type: direct screw connection, color: gray



Your advantages

- Sturdy strain relief for plug and socket
- Touch proof, even when unplugged

Commercial data

| | |
|--------------------------------------|--------------------------------|
| Item number | 1660669 |
| Packing unit | 50 pc |
| Minimum order quantity | 50 pc |
| Note | Made to order (non-returnable) |
| Sales key | BE19 |
| Product key | BE1ZWX |
| Catalog page | Page 439 (C-3-2013) |
| GTIN | 4017918022266 |
| Weight per piece (including packing) | 15.2 g |
| Weight per piece (excluding packing) | 15.2 g |
| Customs tariff number | 85366990 |
| Country of origin | PL |

HCC 4-MC - Plug

1660669

<https://www.phoenixcontact.com/us/products/1660669>



Technical data

Product properties

| | |
|-----------------------|-----------------------------|
| Product type | High current terminal block |
| Number of connections | 10 |
| Number of rows | 1 |

Insulation characteristics

| | |
|----------------------|-----|
| Overvoltage category | III |
| Degree of pollution | 3 |

Electrical properties

| | |
|---|--------|
| Rated surge voltage | 6 kV |
| Maximum power dissipation for nominal condition | 0.77 W |

Connection data

| | |
|---|--|
| Number of connections per level | 10 |
| Nominal cross section | 2.5 mm ² |
| Connection in acc. with standard | IEC 61984 |
| Conductor cross section rigid | 0.2 mm ² ... 4 mm ² |
| Cross section AWG | 24 ... 12 (converted acc. to IEC) |
| Conductor cross section flexible | 0.2 mm ² ... 4 mm ² |
| Conductor cross section, flexible [AWG] | 24 ... 12 (converted acc. to IEC) |
| Conductor cross-section flexible (ferrule without plastic sleeve) | 0.25 mm ² ... 4 mm ² |
| Flexible conductor cross section (ferrule with plastic sleeve) | 0.25 mm ² ... 4 mm ² |
| 2 conductors with same cross section, solid | 0.2 mm ² ... 2.5 mm ² |
| 2 conductors with same cross section, flexible | 0.2 mm ² ... 2.5 mm ² |
| 2 conductors with same cross section, flexible, with ferrule without plastic sleeve | 0.25 mm ² ... 1.5 mm ² |
| 2 conductors with the same cross section, flexible, with TWIN ferrule with plastic sleeve | 0.5 mm ² ... 2.5 mm ² |
| Nominal current | 13.5 A |
| Maximum load current | 13.5 A (with STG-MTN 0,5-1,0 contact) 20 A (with STG-MTN 1,5-2,5 contact) |
| Nominal voltage | 400 V |
| Nominal cross section | 1.5 mm ² |

Dimensions

| | |
|--------------------|---------|
| Width | 92 mm |
| Height | 34.6 mm |
| Depth | 17 mm |
| Drill hole spacing | 83 mm |

Material specifications

| | |
|-------|------|
| Color | gray |
|-------|------|

HCC 4-MC - Plug



1660669

<https://www.phoenixcontact.com/us/products/1660669>

| | |
|--|----|
| Flammability rating according to UL 94 | V2 |
| Insulating material group | I |
| Insulating material | PA |

Mechanical properties

Mechanical data

| | |
|-----------------|----|
| Open side panel | No |
|-----------------|----|

Technical data

| | |
|--------------------|-------|
| Drill hole spacing | 83 mm |
|--------------------|-------|

Environmental and real-life conditions

Ambient conditions

| | |
|--|---|
| Ambient temperature (storage/transport) | -25 °C ... 60 °C (for a short time, not exceeding 24 h, -60 °C to +70 °C) |
| Ambient temperature (assembly) | -5 °C ... 70 °C |
| Ambient temperature (actuation) | -5 °C ... 70 °C |
| Permissible humidity (storage/transport) | 30 % ... 70 % |

Standards and regulations

| | |
|----------------------------------|-----------|
| Connection in acc. with standard | IEC 61984 |
|----------------------------------|-----------|

Mounting

| | |
|---------------|-------------------------|
| Mounting type | direct screw connection |
|---------------|-------------------------|

HCC 4-MC - Plug

1660669

<https://www.phoenixcontact.com/us/products/1660669>



Classifications

ECLASS

| | |
|-------------|----------|
| ECLASS-11.0 | 27141151 |
| ECLASS-12.0 | 27141151 |
| ECLASS-13.0 | 27250306 |

ETIM

| | |
|----------|----------|
| ETIM 9.0 | EC002021 |
|----------|----------|

UNSPSC

| | |
|-------------|----------|
| UNSPSC 21.0 | 39121400 |
|-------------|----------|

HCC 4-MC - Plug

1660669

<https://www.phoenixcontact.com/us/products/1660669>



Environmental product compliance

| | |
|------------|---|
| China RoHS | Environmentally friendly use period: unlimited = EFUP-e No hazardous substances above threshold values |
|------------|---|

Phoenix Contact 2024 © - all rights reserved
<https://www.phoenixcontact.com>

Phoenix Contact USA
586 Fulling Mill Road
Middletown, PA 17057, United States
(+717) 944-1300
info@phoenixcon.com