

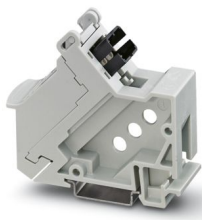
VS-PP-F-SCRJ - DIN rail adapter

1658121

<https://www.phoenixcontact.com/us/products/1658121>



Please be informed that the data shown in this PDF document is generated from our online catalog. Please find the complete data in the user documentation. Our general terms of use for downloads are valid.



Patch panel, SC-RJ, DIN rail mounting, IP20, 1 slot, socket/socket, can be used for glass, multi-mode, PCF, and polymer fibers

Product description

Freenet system

Your advantages

- Compact design

Commercial data

Item number	1658121
Packing unit	1 pc
Minimum order quantity	1 pc
Sales key	AB15
Product key	ABNGAB
Catalog page	Page 375 (C-2-2019)
GTIN	4046356149167
Weight per piece (including packing)	48.3 g
Weight per piece (excluding packing)	48.3 g
Customs tariff number	85367000
Country of origin	CH

VS-PP-F-SCRJ - DIN rail adapter

1658121

<https://www.phoenixcontact.com/us/products/1658121>



Technical data

Product properties

Type	SCRJ
Product type	Patch panel
Number of positions	2
Connection profile	SCRJ in accordance with DIN EN 50377-6-1
Number of slots	1
Housing type	DIN rail adapter

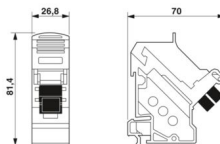
Electrical properties

Transmission medium	FO
---------------------	----

Connection data

Connection method	Coupling
-------------------	----------

Dimensions

Dimensional drawing	
Width	26.8 mm
Height	71 mm
Length	81.4 mm

Mechanical characteristics

Ferrule diameter	2.50 mm
------------------	---------

Material specifications

Color	gray
Flammability rating according to UL 94	V0
Ferrule material	Zirconia ceramics
Material, protective cover	PC
Housing material	PC-GF

Cable/line

External cable diameter ()	4.5 mm ... 9 mm
-----------------------------	-----------------

FO cable

Fiber type	GOF, PCF, POF
------------	---------------

Mechanical properties

Mechanical data

VS-PP-F-SCRJ - DIN rail adapter



1658121

<https://www.phoenixcontact.com/us/products/1658121>

Insertion/withdrawal cycles	≥ 500
-----------------------------	-------

Environmental and real-life conditions

Ambient conditions

Degree of protection	IP20
	IP20
Ambient temperature (operation)	-10 °C ... 60 °C
Ambient temperature (storage/transport)	-40 °C ... 70 °C

Mounting

Mounting type	DIN rail mounting
---------------	-------------------

VS-PP-F-SCRJ - DIN rail adapter



1658121

<https://www.phoenixcontact.com/us/products/1658121>

Classifications

ECLASS

ECLASS-11.0	19170112
ECLASS-12.0	19170112
ECLASS-13.0	19170112

ETIM

ETIM 9.0	EC002697
----------	----------

UNSPSC

UNSPSC 21.0	43223300
-------------	----------

VS-PP-F-SCRJ - DIN rail adapter



1658121
<https://www.phoenixcontact.com/us/products/1658121>

Environmental product compliance

China RoHS	Environmentally friendly use period: unlimited = EFUP-e
	No hazardous substances above threshold values

Phoenix Contact 2024 © - all rights reserved
<https://www.phoenixcontact.com>

Phoenix Contact USA
586 Fulling Mill Road
Middletown, PA 17057, United States
(+717) 944-1300
info@phoenixcon.com