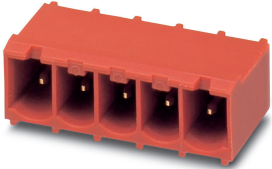



Female insert - VS-MSTBAH 2,5/ 5-GB-5,08-RD-B - 1609549

Please be informed that the data shown in this PDF Document is generated from our Online Catalog. Please find the complete data in the user's documentation. Our General Terms of Use for Downloads are valid (<http://phoenixcontact.com/download>)

MSTB contact insert, for PCB assembly, 400 V, 5-pos., with angled solder pins, RAL 3000 (red), for panel mounting frame VS-PPC-F2-MSTB-...-1R-P



Key Commercial Data

Packing unit	1 pc
Minimum order quantity	50 pc
GTIN	 4 046356 175890
GTIN	4046356175890
Weight per Piece (excluding packing)	2.600 g
Custom tariff number	85366990
Country of origin	Germany

Technical data

Dimensions

Type	Male
Width	13.1 mm
Height	14.7 mm
Length	27.4 mm

Ambient conditions

Ambient temperature (operation)	-40 °C ... 70 °C
---------------------------------	------------------

General data

Rated voltage	48 V
Number of positions	5

Female insert - VS-MSTBAH 2,5/ 5-GB-5,08-RD-B - 1609549

Technical data

General data

Alternative short product description	Contact insert for PCB mounting
Rated voltage (III/3)	400 V
Connection method	Printed circuit connection
Insertion/withdrawal cycles	≥ 100
Contact material	Copper alloy
Contact carrier material	PBT
Contact surface material	Gold over nickel
Rated current	16 A

Standards and Regulations

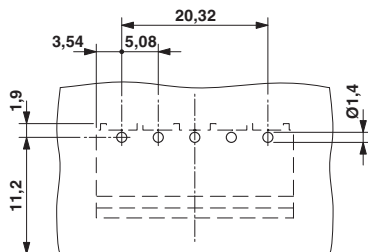
Connection in acc. with standard	CUL
Flammability rating according to UL 94	V0

Environmental Product Compliance

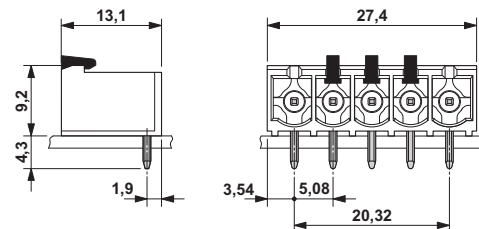
China RoHS	Environmentally friendly use period: unlimited = EFUP-e
	No hazardous substances above threshold values

Drawings

Drilling diagram



Dimensional drawing



Drilling diagram

MSTB contact insert

Classifications

eCl@ss

eCl@ss 10.0.1	27440206
eCl@ss 11.0	27440206
eCl@ss 4.0	27260700
eCl@ss 4.1	27260700
eCl@ss 5.0	27260700

Female insert - VS-MSTBAH 2,5/ 5-GB-5,08-RD-B - 1609549

Classifications

eCl@ss

eCl@ss 5.1	27260700
eCl@ss 6.0	27261200
eCl@ss 7.0	27440206
eCl@ss 9.0	27440206

ETIM

ETIM 3.0	EC000438
ETIM 4.0	EC000438
ETIM 6.0	EC002312
ETIM 7.0	EC002312

UNSPSC

UNSPSC 6.01	31261501
UNSPSC 7.0901	31261501
UNSPSC 11	31261501
UNSPSC 12.01	31261501
UNSPSC 13.2	31261501
UNSPSC 18.0	31261501
UNSPSC 19.0	31261501
UNSPSC 20.0	31261501
UNSPSC 21.0	31261501

Approvals


Approvals

Approvals

EAC / cULus Recognized


Ex Approvals

Approval details

EAC		B.01687
-----	---	---------

Female insert - VS-MSTBAH 2,5/ 5-GB-5,08-RD-B - 1609549

Approvals

cULus Recognized		http://database.ul.com/cgi-bin/XYV/template/LISEXT/1FRAME/index.htm	E118976-20080903
Nominal voltage UN		400 V	
Nominal current IN		16 A	