

# Flush-type connector - SACC-DSIV-MS-4CON-L180 SCO THR - 1439971


Please be informed that the data shown in this PDF Document is generated from our Online Catalog. Please find the complete data in the user's documentation. Our General Terms of Use for Downloads are valid  
(<http://phoenixcontact.com/download>)



Sensor/actuator flush-type connector, connector, 4-pos., M12 SPEEDCON, A-coded, rear/screw mounting with M12 thread, with straight THR solder connection



## Key Commercial Data

Packing unit	1 pc
Minimum order quantity	60 pc
GTIN	 4 046356 476676
GTIN	4046356476676
Weight per Piece (excluding packing)	10.670 g
Custom tariff number	85366990
Country of origin	Germany

## Technical data

### Ambient conditions

Ambient temperature (operation)	-25 °C ... 85 °C (Plug / socket)
	-25 °C ... 85 °C (Plug / socket)
Degree of protection	IP67

### General

Rated current at 40°C	4 A
Rated voltage	250 V
Number of positions	4
Insulation resistance	≥ 100 MΩ
Coding	A - standard

# Flush-type connector - SACC-DSIV-MS-4CON-L180 SCO THR - 1439971

## Technical data

### General

Status display	No
Overvoltage category	II
Degree of pollution	3
Connection method	THR solder connection
Mounting type	Rear mounting M12 x 1 With flat nut
Thread type	M12 x 1

### Material

Flammability rating according to UL 94	HB
Contact surface material	Au
Contact carrier material	PPA
Sealing material	FKM / EPDM

### Standards and Regulations

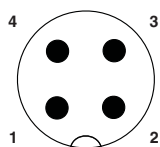
Flammability rating according to UL 94	HB
--	----

### Environmental Product Compliance

REACH SVHC	Lead 7439-92-1
China RoHS	Environmentally Friendly Use Period = 50 years
	For details about hazardous substances go to tab "Downloads", Category "Manufacturer's declaration"

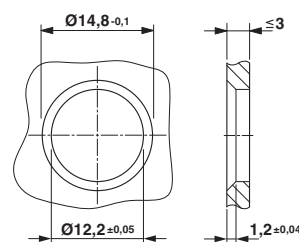
## Drawings

Schematic diagram



Pin assignment M12 plug, 4-pos., A-coded, view plug side

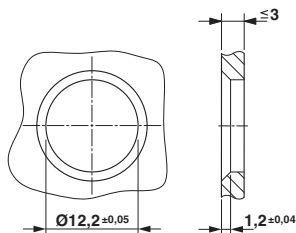
Dimensional drawing



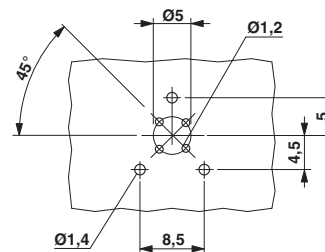
Housing cut-out for two-part M12 flush-type connectors with THR and wave soldering connection, version 1

## Flush-type connector - SACC-DSIV-MS-4CON-L180 SCO THR - 1439971

Dimensional drawing

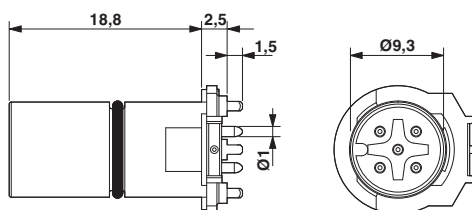


Drilling diagram

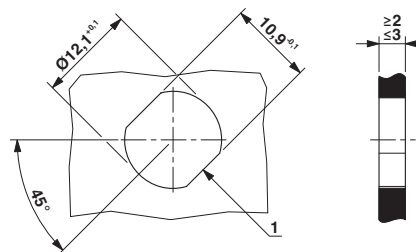


Housing cut-out for two-part M12 flush-type connectors with THR and wave soldering connection, version 2

Dimensional drawing



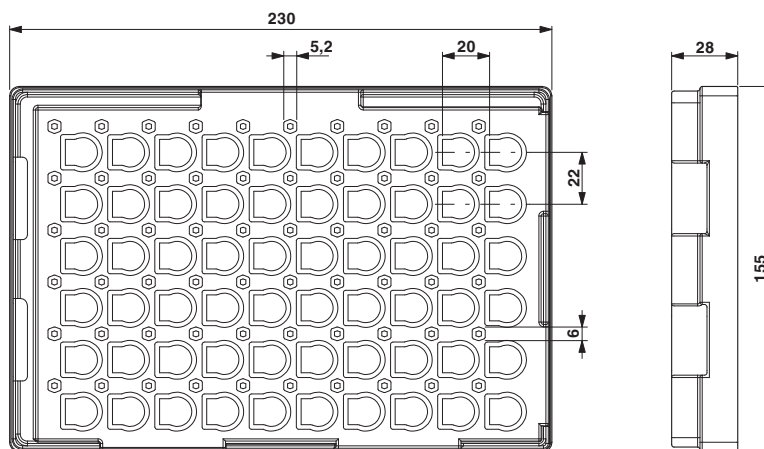
Dimensional drawing



M12 flush-type connector

Housing cutout for M12 fastening thread, mounting panel with feed-through hole (alternative with surface as protection against rotation)

Dimensional drawing



THR tray packaging

## Flush-type connector - SACC-DSIV-MS-4CON-L180 SCO THR - 1439971

### Classifications

#### eCl@ss

eCl@ss 10.0.1	27440102
eCl@ss 11.0	27440102
eCl@ss 4.0	27140800
eCl@ss 4.1	27140800
eCl@ss 5.0	27143400
eCl@ss 5.1	27143400
eCl@ss 6.0	27279200
eCl@ss 7.0	27440103
eCl@ss 9.0	27440102

#### ETIM

ETIM 3.0	EC002061
ETIM 4.0	EC002061
ETIM 6.0	EC002061

#### UNSPSC

UNSPSC 6.01	31251501
UNSPSC 7.0901	31251501
UNSPSC 11	31251501
UNSPSC 12.01	31251501
UNSPSC 13.2	39121413
UNSPSC 18.0	39121413
UNSPSC 19.0	39121413
UNSPSC 20.0	39121413
UNSPSC 21.0	39121413

### Approvals

#### Approvals

---

Approvals

EAC

---

Ex Approvals

#### Approval details

## Flush-type connector - SACC-DSIV-MS-4CON-L180 SCO THR - 1439971

### Approvals

EAC



B.01687