

# HC-EVO-B16PT-BWD-HH-M25ELC-AL - Connector set



1411489  
<https://www.phoenixcontact.com/us/products/1411489>

Please be informed that the data shown in this PDF document is generated from our online catalog. Please find the complete data in the user documentation. Our general terms of use for downloads are valid.



EVO connector set, B16 series, metal housing, consisting of: sleeve housing 1411460, panel mounting base 1411327, EVO screw connection 1411446, pin contact insert 1407732, socket contact insert 1407731

## Commercial data

|                                      |                     |
|--------------------------------------|---------------------|
| Item number                          | 1411489             |
| Packing unit                         | 1 pc                |
| Minimum order quantity               | 1 pc                |
| Sales key                            | BF63                |
| Product key                          | BF7AFX              |
| Catalog page                         | Page 637 (C-2-2017) |
| GTIN                                 | 4046356932899       |
| Weight per piece (including packing) | 629.3 g             |
| Weight per piece (excluding packing) | 622.5 g             |
| Customs tariff number                | 85366990            |
| Country of origin                    | CN                  |

# HC-EVO-B16PT-BWD-HH-M25ELC-AL - Connector set



1411489

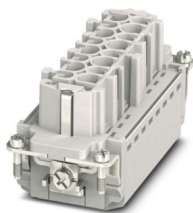
<https://www.phoenixcontact.com/us/products/1411489>

## Set consists of

### HC-B16-I-PT-F - Contact insert

1407731

<https://www.phoenixcontact.com/us/products/1407731>



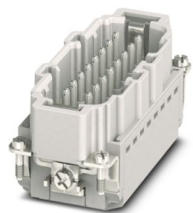
Contact insert, number of positions: 16+PE, size: B16, number of connections per position: 1, Socket, Push-in connection, 500 V, 16 A, 0.14 mm<sup>2</sup> ... 2.5 mm<sup>2</sup>, application: Power

---

### HC-B16-I-PT-M - Contact insert

1407732

<https://www.phoenixcontact.com/us/products/1407732>



Contact insert, number of positions: 16+PE, size: B16, number of connections per position: 1, Pin, Push-in connection, 500 V, 16 A, 0.14 mm<sup>2</sup> ... 2.5 mm<sup>2</sup>, application: Power

# HC-EVO-B16PT-BWD-HH-M25ELC-AL - Connector set



1411489

<https://www.phoenixcontact.com/us/products/1411489>

## HC-B-G-M25-EC-AL - Cable gland

1411446

<https://www.phoenixcontact.com/us/products/1411446>



EVO EMC cable gland with bayonet locking, B series, size M25, cable diameter: 11□...□16 mm

---

## HC-STA-B16-BWD-ELC-AL - Housing

1411327

<https://www.phoenixcontact.com/us/products/1411327>



HEAVYCON B16 panel mounting base, with double locking latch, with flat gasket, salt-water-resistant aluminum, conductive profile gasket

# HC-EVO-B16PT-BWD-HH-M25ELC-AL - Connector set



1411489

<https://www.phoenixcontact.com/us/products/1411489>

## HC-EVO-B16-HHFD-EL-AL - Housing

1411460

<https://www.phoenixcontact.com/us/products/1411460>



HEAVYCON EVO sleeve housing, EMC version, without powder coating, with bayonet flange for EVO screw connection, B16, for double locking latch, height: 88 mm, without EVO screw connection.

# HC-EVO-B16PT-BWD-HH-M25ELC-AL - Connector set



1411489

<https://www.phoenixcontact.com/us/products/1411489>

## Technical data

### Product properties

|                      |                  |
|----------------------|------------------|
| Type                 | B16              |
| Product type         | Connector set    |
| Number of positions  | 16               |
| Connection profile   | 16+PE            |
| Contact numbering    | 1 - 16           |
| No. of cable outlets | 1                |
| Housing type         | Complete housing |
| Seal present         | yes              |
| Protective cover     | no               |
| Series               | HC-B             |
| Cable outlet         | straight         |

### Insulation characteristics

|                      |     |
|----------------------|-----|
| Overvoltage category | III |
| Degree of pollution  | 3   |

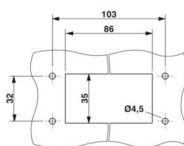
### Electrical properties

|                       |       |
|-----------------------|-------|
| Rated voltage (III/3) | 500 V |
| Rated surge voltage   | 6 kV  |
| Rated current         | 16 A  |

### Connection data

|                                  |  |
|----------------------------------|--|
| Connection method                | Push-in connection   |
| Connection technology            | Push-in connection   |
| Connection in acc. with standard | IEC / EN   |
| Conductor cross section          | 0.14 mm <sup>2</sup> ... 2.5 mm <sup>2</sup> (with ferrule)<br>0.14 mm <sup>2</sup> ... 2.5 mm <sup>2</sup> (with ferrule) |
| Connection cross section AWG     | 26 ... 14  |
| Tightening torque                | 0.8 Nm ... 1.2 Nm (PE connection)<br>0.5 Nm ... 0.8 Nm (Mounting screws for mounting in the HEAVYCON housing)              |
| Stripping length                 | 8 mm ... 10 mm   |

### Dimensions

|                     |  |
|---------------------|--|
| Dimensional drawing |  |
| Width               | 53 mm  |
| Height              | 118.5 mm   |

# HC-EVO-B16PT-BWD-HH-M25ELC-AL - Connector set



1411489

<https://www.phoenixcontact.com/us/products/1411489>

|                                 |         |
|---------------------------------|---------|
| Length                          | 93.5 mm |
| Drill hole distance, horizontal | 83 mm   |
| Drill hole distance, vertical   | 32 mm   |

## Installation dimensions

|                               |       |
|-------------------------------|-------|
| Width of the assembly cutout  | 35 mm |
| Length of the assembly cutout | 86 mm |

## Material specifications

|  |  |
|--|--|
| Material Housing                       | Die-cast aluminum, corrosion-resistant |
| Material Protective cover              | PA                                     |
| Flammability rating according to UL 94 | V0                                     |
| Seal material                          | NBR                                    |
|  | NBR                                    |
| Contact material                       | Copper alloy                           |
| Contact surface material               | Ag                                     |
| Contact carrier material               | PA                                     |
| Locking latch material                 | PA                                     |
| Impact strength                        | IK09                                   |

## Cable/line

|                             |                 |
|-----------------------------|-----------------|
| External cable diameter ( ) | 11 mm ... 16 mm |
|-----------------------------|-----------------|

## Mechanical properties

### Mechanical data

|                             |       |
|-----------------------------|-------|
| Locking type                | Latch |
| Insertion/withdrawal cycles | ≥ 500 |

## Environmental and real-life conditions

### Ambient conditions

|                                 |                   |
|---------------------------------|-------------------|
| Degree of protection            | IP66              |
|                                 | IP67              |
|                                 | IP66              |
| Enclosure rating (NEMA)         | 4 (UL 50e)        |
|                                 | 4X (UL 50e)       |
|                                 | 12 (UL 50e)       |
| Impact strength                 | IK09              |
| Ambient temperature (operation) | -40 °C ... 100 °C |

## Mounting

|                       |  |
|-----------------------|--|
| Mounting type         | Screw mounting   |
| Assembly instructions | Coding also using the CP-HC (1686478) coding profiles. HC-B6.. / HC-B10..for two coding profiles. HC-B16.. / HC-B24..for four coding profiles. |
|                       | Connectors may only be operated when there is no load/the  |

# HC-EVO-B16PT-BWD-HH-M25ELC-AL - Connector set



1411489

<https://www.phoenixcontact.com/us/products/1411489>

power is switched off. Can be used for solid wires and stranded wires with ferrule.

# HC-EVO-B16PT-BWD-HH-M25ELC-AL - Connector set



1411489

<https://www.phoenixcontact.com/us/products/1411489>

## Classifications

### ECLASS

|             |          |
|-------------|----------|
| ECLASS-11.0 | 27440101 |
| ECLASS-12.0 | 27440113 |
| ECLASS-13.0 | 27440113 |

### ETIM

|          |          |
|----------|----------|
| ETIM 9.0 | EC002636 |
|----------|----------|

### UNSPSC

|             |          |
|-------------|----------|
| UNSPSC 21.0 | 39121400 |
|-------------|----------|



# HC-EVO-B16PT-BWD-HH-M25ELC-AL - Connector set



1411489  
<https://www.phoenixcontact.com/us/products/1411489>

## Environmental product compliance

|            |  |
|------------|--|
| REACH SVHC | Lead 7439-92-1   |
| China RoHS | Environmentally Friendly Use Period = 50 years   |
|            | For information on hazardous substances, refer to the manufacturer's declaration available under "Downloads" |

Phoenix Contact 2024 © - all rights reserved  
<https://www.phoenixcontact.com>

Phoenix Contact USA  
586 Fulling Mill Road  
Middletown, PA 17057, United States  
(+717) 944-1300  
[info@phoenixcon.com](mailto:info@phoenixcon.com)