

LS-WMTB-AL (29X8) - Cable marker

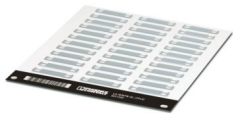


0831500

<https://www.phoenixcontact.com/us/products/0831500>

Please be informed that the data shown in this PDF document is generated from our online catalog. Please find the complete data in the user documentation. Our general terms of use for downloads are valid.

Cable marker, Aluminum label, aluminum color, unlabeled, can be labeled with: TOPMARK NEO, TOPMARK LASER, mounting type: Assembly with cable ties, cable diameter: > 2.9 mm, lettering field size: 29 x 8 mm, Number of individual labels: 36



Your advantages

- Aluminum cable marking for assembly with cable ties
- Suitable for large-surface marking of wires and cables, > 2.9 mm in diameter
- Identification made from metal, high strength in a lightweight design
- Increased durability due to the decoratively anodized surface

Commercial data

Item number	0831500
Packing unit	5 pc
Minimum order quantity	5 pc
Sales key	BG19
Product key	BG231D
Catalog page	Page 189 (C-3-2019)
GTIN	4046356924740
Weight per piece (including packing)	72.8 g
Weight per piece (excluding packing)	61.91 g
Customs tariff number	76169990
Country of origin	CN

LS-WMTB-AL (29X8) - Cable marker



0831500

<https://www.phoenixcontact.com/us/products/0831500>

Technical data

Product properties

Type	Rectangle
Product type	Conductor marking
Type	Laser sheet

Marking

Number of individual labels	36
Identification technology	Direct laser marking

Dimensions

Width	8.5 mm
Length	47 mm
Material strength	0.80 mm

External dimensions

Outside diameter	2.9 mm ... 136 mm
------------------	-------------------

Material specifications

RoHS compliant	yes
Color	aluminum color
Material	Aluminum
Components	free from silicone, halogen, and cadmium

Cable/line

External cable diameter	> 2.90 mm
-------------------------	-----------

Environmental and real-life conditions

Test for substances that would hinder coating with paint or varnish

Result	Test passed
--------	-------------

UV resistance

Specification	ISO 4892-2:2013-03 (following)
Result	Test passed
Test duration	96 h

Weathering-resistance

Specification	ISO 4892-2:2013-03 (following)
Result	Test passed
Test duration	500 h
Procedure	A
Specification	IEC 60068-1:1988-00
Result	Test passed
Duration	72 h

LS-WMTB-AL (29X8) - Cable marker



0831500

<https://www.phoenixcontact.com/us/products/0831500>

Temperature for testing	125 °C
Relative humidity	95
Specification	IEC 60068-1:1988-00
Result	Test passed
Duration	72 h
Temperature for testing	30 °C
Relative humidity	95 %

Wipe resistance of inscriptions

Specification	DIN EN 61010-1 (VDE 0411-1):2011-07 DIN EN 62208 (VDE 0660-511):2012-06 (in parts)
Isopropyl [CAS No. 67-63-0]	Test passed
n-Hexane [CAS No. 110-54-3]	Test passed
Water + Petroleum ether [CAS No. 64742-82-1]	Test passed
Specification	ISO 175:2010 (following)
Test duration	168 h
Specification	DIN EN 60464-2 (VDE 0360-2):2006-10 (following)
Result	Test passed
Test liquid	Acetone-water, Ethanol-water, n-hexane-water mixture

Testing in a condensation changing climate in the presence of sulfur dioxide

Specification	DIN 50018:2013-05
Result	Test passed
Climate level	AHT 1.0 S
Cycles	2

Salt spray test

Specification	DIN EN 60068-2-11:2000-02
Result	Test passed
Test duration	96 h

Salt spray test

Specification	ISO 9227:2012-05
Result	Test passed
Test duration	336 h

High pressure test

Specification	ISO 20653:2013-02
Result	Test passed

Ambient conditions

Ambient temperature (operation)	-25 °C ... 120 °C (At temperatures above 80 °C there might be a slight change to the material surface)
Recommended storage conditions	23 °C/50 % relative humidity. Storage in a dry and dark place in the original packaging is recommended.

LS-WMTB-AL (29X8) - Cable marker



0831500

<https://www.phoenixcontact.com/us/products/0831500>

Recommended ambient temperature (storage/transport)	23 °C
Recommended humidity (storage/transport)	50 %
Shelf life	2 years

Standards and regulations

Wipe resistance	DIN EN 61010-1 (VDE 0411-1)
-----------------	-----------------------------

Mounting

Mounting type	Assembly with cable ties
---------------	--------------------------

LS-WMTB-AL (29X8) - Cable marker



0831500

<https://www.phoenixcontact.com/us/products/0831500>

Classifications

ECLASS

ECLASS-11.0	27281102
ECLASS-12.0	27281102
ECLASS-13.0	27281102

ETIM

ETIM 9.0	EC001530
----------	----------

UNSPSC

UNSPSC 21.0	39131500
-------------	----------

Phoenix Contact 2024 © - all rights reserved
<https://www.phoenixcontact.com>

Phoenix Contact USA
586 Fulling Mill Road
Middletown, PA 17057, United States
(+717) 944-1300
info@phoenixcon.com