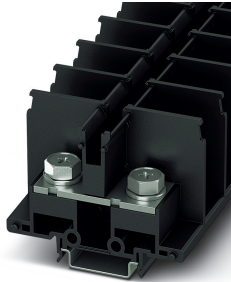


Feed-through modular terminal block - BTO 38 - 3281200

Please be informed that the data shown in this PDF Document is generated from our Online Catalog. Please find the complete data in the user's documentation. Our General Terms of Use for Downloads are valid (<http://phoenixcontact.com/download>)




Feed-through modular terminal block, nom. voltage: 690 V, nominal current: 125 A, connection method: Ring cable lug, number of connections: 2, width: 26 mm, height: 56 mm, color: black, mounting type: NS 35/7,5, NS 35/15

Your advantages

- ✓ Reduction in logistics costs with the uniform CLIPLINE complete system accessories
- ✓ Maximum overview thanks to extensive marking and labeling of every terminal point
- ✓ Convenient ring cable lug connection thanks to the screw connection principle with spring-guided screw; maintenance-free with integrated screw locking
- ✓ Safety for users thanks to integrated shock protection
- ✓ Easy potential distribution with time-saving jumper system



Key Commercial Data

Packing unit	1 pc
GTIN	 4 055626 406954
GTIN	4055626406954
Weight per Piece (excluding packing)	80.000 g
Custom tariff number	85369010
Country of origin	India

Technical data

General

Number of levels	1
Number of connections	2
Nominal cross section	35 mm ²
Color	black

Feed-through modular terminal block - BTO 38 - 3281200

Technical data

General

Insulating material	PC
Flammability rating according to UL 94	V0
Rated surge voltage	8 kV
Degree of pollution	3
Overvoltage category	III
Insulating material group	IIIa
Maximum power dissipation for nominal condition	4.06 W
Connection method	Ring cable lug
Connection in acc. with standard	IEC 60947-7-1
Maximum load current	125 A
Nominal current I_N	125 A
Nominal voltage U_N	690 V
Open side panel	Yes

Dimensions

Width	26 mm
Length	77.2 mm
Height	56 mm
Height NS 35/7,5	57.3 mm
Height NS 35/15	64.8 mm

Connection data

Connection method	Ring cable lug
Connection in acc. with standard	IEC 60947-7-1
Stripping length	The stripping length depends on the specification provided by the cable lug manufacturer.
Cable lug connection according to standard	DIN 46235:1983-07
Min. cross section for cable lug connection	1.5 mm ²
Max. cross section for cable lug connection	35 mm ²
AWG min	20
AWG max	2
Hole diameter, min.	8.4 mm
Cable lug width, max.	23.7 mm
Bolt diameter	8 mm
Screw thread	M8
Tightening torque, min	10 Nm
Tightening torque max	13.5 Nm
Connection in acc. with standard	JIS 8207-7-1
Cable lug connection according to standard	JIS 8207-7-1

Feed-through modular terminal block - BTO 38 - 3281200

Technical data

Connection data

Min. cross section for cable lug connection	1.25 mm ²
Max. cross section for cable lug connection	38 mm ²
Hole diameter, min.	8.4 mm
Cable lug width, max.	23.7 mm
Bolt diameter	8 mm
Screw thread	M8
Tightening torque, min	10 Nm
Tightening torque max	13.5 Nm
Nominal cross section	38 mm ²

Ambient conditions

Operating temperature	-60 °C ... 85 °C
Ambient temperature (storage/transport)	-25 °C ... 55 °C (for a short time, not exceeding 24 h, -60 °C to +70 °C)
Permissible humidity (storage/transport)	30 % ... 70 %
Ambient temperature (assembly)	-5 °C ... 70 °C
Ambient temperature (actuation)	-5 °C ... 70 °C

Standards and Regulations

Connection in acc. with standard	IEC 60947-7-1
	JIS 8207-7-1
Flammability rating according to UL 94	V0

Environmental Product Compliance

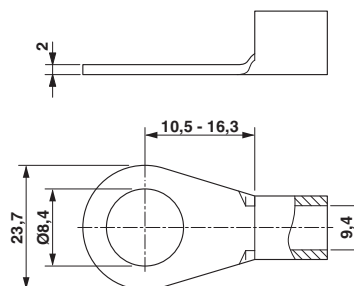
China RoHS	Environmentally friendly use period: unlimited = EFUP-e
	No hazardous substances above threshold values

Drawings

Circuit diagram

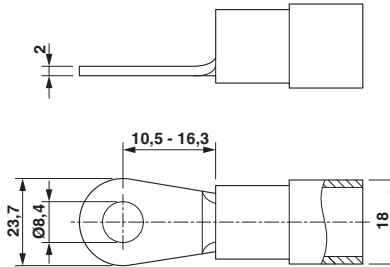


Dimensional drawing



Feed-through modular terminal block - BTO 38 - 3281200

Dimensional drawing



Classifications

eCl@ss

eCl@ss 10.0.1	27141120
eCl@ss 11.0	27141120
eCl@ss 4.0	27141120
eCl@ss 4.1	27141120
eCl@ss 5.0	27141120
eCl@ss 5.1	27141120
eCl@ss 6.0	27141100
eCl@ss 7.0	27141120
eCl@ss 9.0	27141120

ETIM

ETIM 2.0	EC000897
ETIM 3.0	EC000897
ETIM 4.0	EC000897
ETIM 6.0	EC000897
ETIM 7.0	EC000897

UNSPSC

UNSPSC 6.01	30211811
UNSPSC 7.0901	39121410
UNSPSC 11	39121410
UNSPSC 12.01	39121410
UNSPSC 13.2	39121410
UNSPSC 18.0	39121410
UNSPSC 19.0	39121410
UNSPSC 20.0	39121410
UNSPSC 21.0	39121410

Feed-through modular terminal block - BTO 38 - 3281200

Approvals

Approvals


Approvals


DNV GL / CSA / UL Recognized / cUL Recognized / EAC / cULus Recognized


Ex Approvals

Approval details

DNV GL		https://approvalfinder.dnvgl.com/	TAE00001S2
--------	---	---	------------

CSA		http://www.csagroup.org/services-industries/product-listing/	13631
	B	C	
Nominal voltage UN	600 V	600 V	
Nominal current IN	100 A	100 A	
mm ² /AWG/kcmil	20-2	20-2	

UL Recognized		http://database.ul.com/cgi-bin/XYV/template/LISEXT/1FRAME/index.htm	FILE E 60425
	B	C	
Nominal voltage UN	600 V	600 V	
Nominal current IN	100 A	100 A	
mm ² /AWG/kcmil	20-2	20-2	

cUL Recognized		http://database.ul.com/cgi-bin/XYV/template/LISEXT/1FRAME/index.htm	FILE E 60425
	B	C	
Nominal voltage UN	600 V	600 V	
Nominal current IN	100 A	100 A	
mm ² /AWG/kcmil	20-2	20-2	

Feed-through modular terminal block - BTO 38 - 3281200

Approvals

