

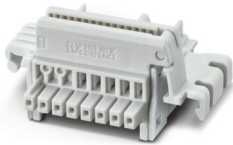
TBUS8-20,0-PPPPSS-7035 - DIN rail bus connectors



2202892

<https://www.phoenixcontact.com/us/products/2202892>

Please be informed that the data shown in this PDF document is generated from our online catalog. Please find the complete data in the user documentation. Our general terms of use for downloads are valid.



DIN rail connector, color: light grey, nominal current: 6 A, 4 A (parallel contacts) (Serial contacts), rated voltage (III/2): 32 V, number of positions: 8, pitch: 2.54 mm, mounting: DIN rail mounting, locking: without, mounting: without, type of packaging: packed in cardboard, Item with gold-plated contacts, bus connectors for connecting with electronics housings, 6 parallel contacts/2 serial contacts

Your advantages

- Space-saving installation under the housing in the DIN rail
- Contact design enables electronics modules to be easily snapped on
- Power supply and communication without additional wiring
- Parallel and serial contacts for efficient signal and data transmission
- Fast module-to-module communication without additional wiring effort
- Efficient connection between the individual housings of the ICS and ME-IO series

Commercial data

Item number	2202892
Packing unit	10 pc
Minimum order quantity	10 pc
Sales key	AC09
Product key	ACHAGA
GTIN	4055626382173
Weight per piece (including packing)	6.1 g
Weight per piece (excluding packing)	4.74 g
Customs tariff number	85366990
Country of origin	PL

TBUS8-20,0-PPPPSS-7035 - DIN rail bus connectors



2202892

<https://www.phoenixcontact.com/us/products/2202892>

Technical data

Notes

Recommendation	Material of contact pads for bus connector, galvanic gold (hard gold)
----------------	---

Product properties

Product type	DIN rail connector
Product family	TBUS-8-2...PS
Number of positions	8
Pitch	2.54 mm

Electrical properties

Nominal current I_N	6 A (parallel contacts)
Nominal voltage U_N	32 V
Degree of pollution	3
Rated voltage (III/2)	32 V
Rated surge voltage (III/2)	1.5 kV
Rated voltage (II/2)	32 V
Rated surge voltage (II/2)	1.5 kV

Dimensions

Pitch	2.54 mm
Width [w]	24.3 mm
Height [h]	37.15 mm
Length [l]	16.3 mm

Material specifications

Material data - contact

Contact material	Cu alloy
Surface characteristics	gold-plated

Material data - housing

Color (Housing)	light grey (7035)
Insulating material	PA
Insulating material group	I
CTI according to IEC 60112	600
Flammability rating according to UL 94	V0

Connector

Connection 1

Insulating material	PA
CTI according to IEC 60112	600

TBUS8-20,0-PPPPSS-7035 - DIN rail bus connectors



2202892

<https://www.phoenixcontact.com/us/products/2202892>

Electrical tests

Air clearances and creepage distances |

Specification	IEC 60664-1:2007-04
Insulating material group	I
Rated insulation voltage (III/2)	32 V
Rated surge voltage (III/2)	1.5 kV
minimum clearance value - non-homogenous field (III/2)	0.5 mm
minimum creepage distance (III/2)	0.53 mm
Rated insulation voltage (II/2)	32 V
Rated surge voltage (II/2)	1.5 kV
minimum clearance value - non-homogenous field (II/2)	0.5 mm
minimum creepage distance (II/2)	0.53 mm

Environmental and real-life conditions

Ambient conditions

Ambient temperature (operation)	-40 °C ... 105 °C (dependent on the derating curve)
Ambient temperature (storage/transport)	-40 °C ... 55 °C
Relative humidity (storage/transport)	30 % ... 70 %
Ambient temperature (assembly)	-5 °C ... 100 °C

Mounting

Mounting type	DIN rail mounting
---------------	-------------------

Packaging specifications

Type of packaging	packed in cardboard
Outer packaging type	Carton

TBUS8-20,0-PPPPSS-7035 - DIN rail bus connectors



2202892

<https://www.phoenixcontact.com/us/products/2202892>

Classifications

ECLASS

ECLASS-11.0	27460201
ECLASS-12.0	27460201
ECLASS-13.0	27460201

ETIM

ETIM 9.0	EC002637
----------	----------

UNSPSC

UNSPSC 21.0	39121400
-------------	----------

TBUS8-20,0-PPPPSS-7035 - DIN rail bus connectors



2202892

<https://www.phoenixcontact.com/us/products/2202892>

Environmental product compliance

China RoHS	Environmentally friendly use period: unlimited = EFUP-e
	No hazardous substances above threshold values

Phoenix Contact 2024 © - all rights reserved
<https://www.phoenixcontact.com>

Phoenix Contact USA
586 Fulling Mill Road
Middletown, PA 17057, United States
(+717) 944-1300
info@phoenixcon.com