

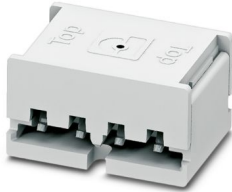
# PTF 0,3/ 4-BB-10-H - Printed-circuit board connector



1707563

<https://www.phoenixcontact.com/us/products/1707563>

Please be informed that the data shown in this PDF document is generated from our online catalog. Please find the complete data in the user documentation. Our general terms of use for downloads are valid.



PCB direct plug, nominal cross section:  $0.34 \text{ mm}^2$ , color: white, rated voltage (III/2): 25 V, contact surface: Tin, contact connection type: Socket, number of potentials: 4, number of rows: 1, number of positions: 4, number of connections: 4, product range: PTF 0,3/..-BB-H, pitch: 2.4 mm, mounting: Direct plug-in method, plug-in system: COMBICON PTF, type of packaging: packed in cardboard, For flexible PCBs with a width of 10 mm and a permissible PCB thickness in the contact zone of 0.15 mm ... 0.3 mm

## Your advantages

- Tool-free fast connection for flexible PCBs
- Small component size for applications where space is at a premium
- Reliable contacting of flexible PCBs, thanks to fixing pin
- Designed and tested according to IEC 60838-2-2

## Commercial data

Item number	1707563
Packing unit	25 pc
Minimum order quantity	25 pc
Sales key	AA08
Product key	AAHRAB
GTIN	4046356934190
Weight per piece (including packing)	2.048 g
Weight per piece (excluding packing)	2.048 g
Customs tariff number	85366930
Country of origin	PL

# PTF 0,3/ 4-BB-10-H - Printed-circuit board connector



1707563

<https://www.phoenixcontact.com/us/products/1707563>

## Technical data

### Product properties

Product line	COMBICON Connectors Special
Product type	PCB direct plug
Product family	PTF 0,3/..-BB-H
Number of positions	4
Pitch	2.4 mm
Number of connections	4
Number of rows	1
Number of potentials	4

### Electrical properties

Nominal voltage $U_N$	< 25 V
Degree of pollution	3
Rated voltage (III/3)	25 V
Rated voltage (III/2)	25 V

### Mounting

Mounting type	Direct plug-in method
---------------	-----------------------

### Material specifications

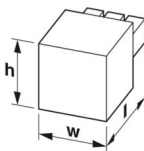
#### Material data - contact

Note	WEEE/RoHS-compliant, free of whiskers according to IEC 60068-2-82/JEDEC JESD 201
Contact material	Cu alloy
Surface characteristics	hot-dip tin-plated
Metal surface contact area (top layer)	Tin (4 - 8 $\mu\text{m}$ Sn)
Metal surface soldering area (top layer)	Tin (4 - 8 $\mu\text{m}$ Sn)

#### Material data - housing

Color (Housing)	white (9010)
Insulating material	PBT
Insulating material group	IIIa
CTI according to IEC 60112	275
Flammability rating according to UL 94	V0

### Dimensions

Dimensional drawing	
---------------------	--

# PTF 0,3/ 4-BB-10-H - Printed-circuit board connector



1707563

<https://www.phoenixcontact.com/us/products/1707563>

Pitch	2.4 mm
Width [w]	11.2 mm
Height [h]	4.8 mm
Length [l]	8 mm

## Electrical tests

### Temperature-rise test

Specification	IEC 60838-1:2004-10 + AMD 1:2008-07 + AMD 2:2011-03
Requirement temperature-rise test	Increase in temperature $\leq$ 45 K

### Insulation resistance

Specification	IEC 60838-1:2004-10 + AMD 1:2008-07 + AMD 2:2011-03
Insulation resistance, neighboring positions	$>$ 1 M $\Omega$

### Air clearances and creepage distances |

Specification	IEC 60838-1:2004-10 + AMD 1:2008-07 + AMD 2:2011-03
Insulating material group	IIIa
Rated insulation voltage (III/3)	25 V
Rated insulation voltage (III/2)	25 V

## Environmental and real-life conditions

### Vibration test

Specification	IEC 60068-2-6:2007-12
Frequency	10 - 500 - 10 Hz
Sweep speed	1 octave/min
Amplitude	0.35 mm (10 Hz ... 60.1 Hz)
Sweep speed	5g (60.1 Hz ... 150 Hz)
Test duration per axis	2 h

### Glow-wire test

Specification	IEC 60695-2-11:2000-10
Temperature	650 °C
Time of exposure	30 s

### Ambient conditions

Ambient temperature (operation)	-30 °C ... 100 °C (dependent on the derating curve)
Ambient temperature (storage/transport)	-40 °C ... 85 °C
Relative humidity (storage/transport)	30 % ... 70 %

## Packaging specifications

Type of packaging	packed in cardboard
-------------------	---------------------

# PTF 0,3/ 4-BB-10-H - Printed-circuit board connector



1707563

<https://www.phoenixcontact.com/us/products/1707563>

## Classifications

### ECLASS

ECLASS-11.0	27460202
ECLASS-12.0	27460202
ECLASS-13.0	27460202

### ETIM

ETIM 9.0	EC002638
----------	----------

### UNSPSC

UNSPSC 21.0	39121400
-------------	----------

# PTF 0,3/ 4-BB-10-H - Printed-circuit board connector



1707563

<https://www.phoenixcontact.com/us/products/1707563>

## Environmental product compliance

China RoHS	Environmentally friendly use period: unlimited = EFUP-e
	No hazardous substances above threshold values

Phoenix Contact 2024 © - all rights reserved  
<https://www.phoenixcontact.com>

Phoenix Contact USA  
586 Fulling Mill Road  
Middletown, PA 17057, United States  
(+717) 944-1300  
[info@phoenixcon.com](mailto:info@phoenixcon.com)