

AGK PT 8X6/M10 - Pick-off terminal block

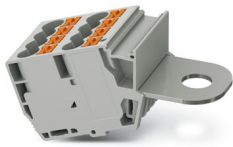


1017450

<https://www.phoenixcontact.com/us/products/1017450>

Please be informed that the data shown in this PDF document is generated from our online catalog. Please find the complete data in the user documentation. Our general terms of use for downloads are valid.

Pick-off terminal block, nom. voltage: 1000 V, nominal current: 41 A, number of connections: 9, connection method: Push-in connection, 1 level, Rated cross section: 6 mm², cross section: 0.5 mm² - 10 mm², Bolt connection, 1 level, mounting type: on base element, color: gray



Your advantages

- The fully insulated, optionally used pick-off terminal block enables voltage pick-off
- Large-surface marking

Commercial data

| | |
|--------------------------------------|---------------------|
| Item number | 1017450 |
| Packing unit | 10 pc |
| Minimum order quantity | 10 pc |
| Product key | BE2ZWX |
| Catalog page | Page 119 (C-1-2019) |
| GTIN | 4055626500539 |
| Weight per piece (including packing) | 65.83 g |
| Weight per piece (excluding packing) | 62.2 g |
| Country of origin | CN |

AGK PT 8X6/M10 - Pick-off terminal block



1017450

<https://www.phoenixcontact.com/us/products/1017450>

Technical data

Notes

General

| | |
|------|--|
| Note | For power distribution applications, IEC 60364-4-43.2008; modified + corrigendum Okt. 2008 (DIN VDE 0100-430:2010-10) section 433.2 ff must be observed! |
|------|--|

Product properties

| | |
|-----------------------|-------------------|
| Product type | Pick-off terminal |
| Number of connections | 9 |
| Number of rows | 1 |
| Potentials | 1 |

Insulation characteristics

| | |
|----------------------|-----|
| Overvoltage category | III |
|----------------------|-----|

Electrical properties

| | |
|---|--------|
| Rated surge voltage | 8 kV |
| Maximum power dissipation for nominal condition | 1.31 W |

Connection data

| | |
|---------------------------------|-------------------|
| Number of connections per level | 9 |
| Nominal cross section | 6 mm ² |
| Rated cross section AWG | 10 |

1 level

| | |
|---|---|
| Stripping length | 10 mm ... 12 mm |
| Internal cylindrical gage | A5 |
| Connection in acc. with standard | IEC 60947-7-1 |
| Conductor cross section rigid | 0.5 mm ² ... 10 mm ² |
| Cross section AWG | 20 ... 8 (converted acc. to IEC) |
| Conductor cross section flexible | 0.5 mm ² ... 6 mm ² |
| Conductor cross section, flexible [AWG] | 20 ... 10 (converted acc. to IEC) |
| Conductor cross-section flexible (ferrule without plastic sleeve) | 0.5 mm ² ... 6 mm ² |
| Flexible conductor cross section (ferrule with plastic sleeve) | 0.5 mm ² ... 6 mm ² |
| Conductor cross-section flexible (2 conductors with the same cross-section, with TWIN ferrule and plastic sleeve) | 0.5 mm ² ... 1.5 mm ² |
| Nominal current | 41 A |
| Maximum load current | 57 A |
| Maximum total current | 106 A (Bolt connection) |
| Nominal voltage | 1000 V |
| Nominal cross section | 6 mm ² |

1 level

AGK PT 8X6/M10 - Pick-off terminal block



1017450

<https://www.phoenixcontact.com/us/products/1017450>

| | |
|---|---|
| Screw thread | M10 |
| Note | Connection bolts |
| Tightening torque | 10 ... 20 Nm |
| Connection in acc. with standard | IEC 60947-7-1 |
| Conductor cross section flexible | 6 mm ² ... 120 mm ² |
| Conductor cross section, flexible [AWG] | 10 ... 250 kcmil (converted acc. to IEC) |
| Nominal current | 41 A |

Cable lug connection

| | |
|-------------------------|-------------------------|
| Cross section range AWG | (converted acc. to IEC) |
| Hole diameter | 10.4 mm |
| Width | 32 mm |
| Bolt diameter | 10 mm |
| Screw thread | M10 |

Dimensions

| | |
|---------------|---------|
| Width | 31 mm |
| Height | 72.6 mm |
| Depth | 32.3 mm |
| Hole diameter | 10.4 mm |

Material specifications

| | |
|---|-------------|
| Color | gray |
| Flammability rating according to UL 94 | V0 |
| Insulating material group | I |
| Insulating material | PA |
| Static insulating material application in cold | -60 °C |
| Temperature index of insulation material (DIN EN 60216-1 (VDE 0304-21)) | 130 °C |
| Relative insulation material temperature index (Elec., UL 746 B) | 130 °C |
| Fire protection for rail vehicles (DIN EN 45545-2) R22 | HL 1 - HL 3 |
| Fire protection for rail vehicles (DIN EN 45545-2) R23 | HL 1 - HL 3 |
| Fire protection for rail vehicles (DIN EN 45545-2) R24 | HL 1 - HL 3 |
| Fire protection for rail vehicles (DIN EN 45545-2) R26 | HL 1 - HL 3 |
| Calorimetric heat release NFPA 130 (ASTM E 1354) | 28 MJ/kg |
| Surface flammability NFPA 130 (ASTM E 162) | passed |
| Specific optical density of smoke NFPA 130 (ASTM E 662) | passed |
| Smoke gas toxicity NFPA 130 (SMP 800C) | passed |

Electrical tests

Surge voltage test

| | |
|-----------------------|-------------|
| Test voltage setpoint | 9.8 kV |
| Result | Test passed |

Temperature-rise test

AGK PT 8X6/M10 - Pick-off terminal block



1017450

<https://www.phoenixcontact.com/us/products/1017450>

| | |
|---|-------------------------------------|
| Requirement temperature-rise test | Increase in temperature ≤ 45 K |
| Result | Test passed |
| Short-time withstand current 6 mm ² | 0.72 kA |
| Short-time withstand current 10 mm ² | 1.2 kA |
| Result | Test passed |

Power-frequency withstand voltage

| | |
|-----------------------|-------------|
| Test voltage setpoint | 2.2 kV |
| Result | Test passed |

Mechanical properties

Mechanical data

| | |
|-----------------|----|
| Open side panel | No |
|-----------------|----|

Mechanical tests

Mechanical strength

| | |
|--------|-------------|
| Result | Test passed |
|--------|-------------|

Attachment on the carrier

| | |
|-------------------------|-------------|
| DIN rail/fixing support | NS 35 |
| Test force setpoint | 5 N |
| Result | Test passed |

Test for conductor damage and slackening

| | |
|--------------------------------|------------------------------|
| Rotation speed | 10 rpm |
| Revolutions | 135 |
| Conductor cross section/weight | 0.5 mm ² / 0.3 kg |
| | 6 mm ² / 1.4 kg |
| | 10 mm ² / 2 kg |
| Result | Test passed |

Environmental and real-life conditions

Aging

| | |
|--------------------|-------------|
| Temperature cycles | 192 |
| Result | Test passed |

Needle-flame test

| | |
|------------------|-------------|
| Time of exposure | 30 s |
| Result | Test passed |

Oscillation/broadband noise

| | |
|---------------|---|
| Specification | DIN EN 50155 (VDE 0115-200):2008-03 |
| Spectrum | Service life test category 2, bogie-mounted |
| Frequency | $f_1 = 5$ Hz to $f_2 = 250$ Hz |
| ASD level | 6.12 (m/s ²) ² /Hz |

AGK PT 8X6/M10 - Pick-off terminal block



1017450

<https://www.phoenixcontact.com/us/products/1017450>

| | |
|------------------------|-------------------|
| Acceleration | 3.12g |
| Test duration per axis | 5 h |
| Test directions | X-, Y- and Z-axis |
| Result | Test passed |

Shocks

| | |
|--------------------------------|-------------------------------------|
| Specification | DIN EN 50155 (VDE 0115-200):2008-03 |
| Pulse shape | Half-sine |
| Acceleration | 30g |
| Shock duration | 18 ms |
| Number of shocks per direction | 3 |
| Test directions | X-, Y- and Z-axis (pos. and neg.) |
| Result | Test passed |

Ambient conditions

| | |
|--|--|
| Ambient temperature (operation) | -60 °C ... 110 °C (Operating temperature range incl. self-heating; for max. short-term operating temperature, see RTI Elec.) |
| Ambient temperature (storage/transport) | -25 °C ... 60 °C (for a short time, not exceeding 24 h, -60 °C to +70 °C) |
| Ambient temperature (assembly) | -5 °C ... 70 °C |
| Ambient temperature (actuation) | -5 °C ... 70 °C |
| Permissible humidity (operation) | 20 % ... 90 % |
| Permissible humidity (storage/transport) | 30 % ... 70 % |

Standards and regulations

| | |
|----------------------------------|---------------|
| Connection in acc. with standard | IEC 60947-7-1 |
| | IEC 60947-7-1 |

Mounting

| | |
|---------------|-----------------|
| Mounting type | on base element |
|---------------|-----------------|

AGK PT 8X6/M10 - Pick-off terminal block



1017450

<https://www.phoenixcontact.com/us/products/1017450>

Classifications

ECLASS

| | |
|-------------|----------|
| ECLASS-11.0 | 27141120 |
| ECLASS-13.0 | 27250308 |

ETIM

| | |
|----------|----------|
| ETIM 9.0 | EC000897 |
|----------|----------|

UNSPSC

| | |
|-------------|----------|
| UNSPSC 21.0 | 39121400 |
|-------------|----------|

AGK PT 8X6/M10 - Pick-off terminal block



1017450

<https://www.phoenixcontact.com/us/products/1017450>

Environmental product compliance

| | |
|------------|---|
| China RoHS | Environmentally friendly use period: unlimited = EFUP-e |
| | No hazardous substances above threshold values |

Phoenix Contact 2024 © - all rights reserved
<https://www.phoenixcontact.com>

Phoenix Contact USA
586 Fulling Mill Road
Middletown, PA 17057, United States
(+717) 944-1300
info@phoenixcon.com