

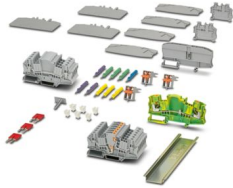
# UTME 6-SET POWER 1 - Starter kit



3036001

<https://www.phoenixcontact.com/us/products/3036001>

Please be informed that the data shown in this PDF document is generated from our online catalog. Please find the complete data in the user documentation. Our general terms of use for downloads are valid.



Starter kit - consisting of test disconnect terminal blocks with screw connection technology, marking material, bridging and test accessories. A terminal strip for a three-phase transformer circuit (current and voltage) can be configured individually.

## Commercial data

|                                      |               |
|--------------------------------------|---------------|
| Item number                          | 3036001       |
| Packing unit                         | 1 pc          |
| Minimum order quantity               | 1 pc          |
| Sales key                            | BE01          |
| Product key                          | BE1133        |
| GTIN                                 | 4055626345451 |
| Weight per piece (including packing) | 674.8 g       |
| Weight per piece (excluding packing) | 674 g         |
| Customs tariff number                | 85369010      |
| Country of origin                    | DE            |

# UTME 6-SET POWER 1 - Starter kit

3036001

<https://www.phoenixcontact.com/us/products/3036001>

## Set consists of

### UTME 6 - Test disconnect terminal block

3047400

<https://www.phoenixcontact.com/us/products/3047400>



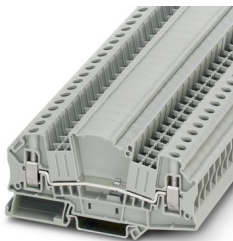
Test disconnect terminal block, nom. voltage: 500 V, nominal current: 30 A, 1 level, connection method: Screw connection, Rated cross section: 6 mm<sup>2</sup>, cross section: 0.2 mm<sup>2</sup> - 10 mm<sup>2</sup>, mounting: NS 35/7,5, NS 35/15, color: gray

---

### UTMED 6 - Feed-through terminal block

3047413

<https://www.phoenixcontact.com/us/products/3047413>



Feed-through terminal block, nom. voltage: 500 V, nominal current: 41 A, number of connections: 2, connection method: Screw connection, Rated cross section: 6 mm<sup>2</sup>, cross section: 0.2 mm<sup>2</sup> - 10 mm<sup>2</sup>, mounting type: NS 35/7,5, NS 35/15, color: gray

# UTME 6-SET POWER 1 - Starter kit



3036001

<https://www.phoenixcontact.com/us/products/3036001>

## UTMED 6-PE - Ground terminal

3047442

<https://www.phoenixcontact.com/us/products/3047442>



Ground terminal, number of connections: 2, connection method: Screw connection, cross section: 0.2 mm<sup>2</sup> - 10 mm<sup>2</sup>, mounting type: NS 35/7,5, NS 35/15, color: green-yellow

---

## D-UTME 6 - End cover

3047426

<https://www.phoenixcontact.com/us/products/3047426>

End cover, depth: 49.6 mm, width: 2.2 mm, height: 100.8 mm, color: gray



# UTME 6-SET POWER 1 - Starter kit

3036001

<https://www.phoenixcontact.com/us/products/3036001>



## ATP-URTK/SP - Partition plate

0311139

<https://www.phoenixcontact.com/us/products/0311139>

Partition plate, depth: 64 mm, width: 2 mm, height: 99 mm, color: gray



---

## CARRIER 35-8 - Partition plate

3034387

<https://www.phoenixcontact.com/us/products/3034387>

Partition plate, With storage option for FBS...-8 and PAI 4-FIX, material: PA, color: gray



# UTME 6-SET POWER 1 - Starter kit



3036001

<https://www.phoenixcontact.com/us/products/3036001>

## SB-ME 2-8 - Switching jumper

3034468

<https://www.phoenixcontact.com/us/products/3034468>



Switching jumper, pitch: 8.2 mm, number of positions: 2, length: 25 mm, color: gray/orange

---

## FBS 2-8 - Plug-in bridge

3030284

<https://www.phoenixcontact.com/us/products/3030284>



Plug-in bridge, pitch: 8.2 mm, number of positions: 2, color: red

# UTME 6-SET POWER 1 - Starter kit



3036001

<https://www.phoenixcontact.com/us/products/3036001>

## PAI-4-FIX YE - Test adapter

3032745

<https://www.phoenixcontact.com/us/products/3032745>



Test adapter, Touch proof against unintentional direct contact according to DIN EN 50274 when plugged in, for 4 mm test plug and terminal blocks with 8.2 mm pitch, number of positions: 1, color: yellow

---

## PAI-4-FIX GN - Test adapter

3032758

<https://www.phoenixcontact.com/us/products/3032758>



Test adapter, Touch proof against unintentional direct contact according to DIN EN 50274 when plugged in, for 4 mm test plug and terminal blocks with 8.2 mm pitch, number of positions: 1, color: green

# UTME 6-SET POWER 1 - Starter kit



3036001

<https://www.phoenixcontact.com/us/products/3036001>

## PAI-4-FIX VT - Test adapter

3032761

<https://www.phoenixcontact.com/us/products/3032761>



Test adapter, Touch proof against unintentional direct contact according to DIN EN 50274 when plugged in, for 4 mm test plug and terminal blocks with 8.2 mm pitch, number of positions: 1, color: violet

---

## PAI-4-FIX BU - Test adapter

3032729

<https://www.phoenixcontact.com/us/products/3032729>



Test adapter, Touch proof against unintentional direct contact according to DIN EN 50274 when plugged in, for 4 mm test plug and terminal blocks with 8.2 mm pitch, number of positions: 1, color: blue

# UTME 6-SET POWER 1 - Starter kit

3036001

<https://www.phoenixcontact.com/us/products/3036001>



## S-ME 6 - Switching lock

3034439

<https://www.phoenixcontact.com/us/products/3034439>

Switching lock, width: 8.2 mm, height: 12 mm, color: white



---

## CLIPFIX 35-5 - End bracket

3022276

<https://www.phoenixcontact.com/us/products/3022276>

Quick mounting end clamp for NS 35/7,5 DIN rail or NS 35/15 DIN rail, with marking option, with parking option for FBS...5, FBS...6, KSS 5, KSS 6, width: 5.15 mm, color: gray





# UTME 6-SET POWER 1 - Starter kit



3036001

<https://www.phoenixcontact.com/us/products/3036001>

## KLM 3 - Terminal strip marker carrier

0811969

<https://www.phoenixcontact.com/us/products/0811969>



Terminal strip marker carrier, adjustable height, for CLIPFIX 15, CLIPFIX 35, and CLIPFIX 35-5 end brackets, can be marked using labels in 20 x 8 mm format

---

## UC-TM 8 - Marker for terminal blocks

0818072

<https://www.phoenixcontact.com/us/products/0818072>



Marker for terminal blocks, Sheet, white, unlabeled, can be labeled with: BLUEMARK ID COLOR, BLUEMARK ID, BLUEMARK CLED, PLOTMARK, CMS-P1-PLOTTER, mounting type: snapped, for terminal block width: 8.2 mm, lettering field size: 7.6 x 10.5 mm, Number of individual labels: 56

# UTME 6-SET POWER 1 - Starter kit



3036001

<https://www.phoenixcontact.com/us/products/3036001>

## Technical data

### Notes

|         |   |
|---------|---|
| General | Quantity specifications on the set contents under downloads |
|---------|---|

### Product properties

|              |             |
|--------------|-------------|
| Product type | Starter kit |
|--------------|-------------|

### Dimensions

|        |        |
|--------|--------|
| Width  | 225 mm |
| Height | 315 mm |
| Depth  | 65 mm  |

### Material specifications

|  |             |
|--|-------------|
| Static insulating material application in cold                   | -60 °C      |
| Relative insulation material temperature index (Elec., UL 746 B) | 130 °C      |
| Fire protection for rail vehicles (DIN EN 45545-2) R22           | HL 1 - HL 3 |
| Fire protection for rail vehicles (DIN EN 45545-2) R23           | HL 1 - HL 3 |
| Fire protection for rail vehicles (DIN EN 45545-2) R24           | HL 1 - HL 3 |
| Fire protection for rail vehicles (DIN EN 45545-2) R26           | HL 1 - HL 3 |
| Surface flammability NFPA 130 (ASTM E 162)                       | passed      |
| Specific optical density of smoke NFPA 130 (ASTM E 662)          | passed      |
| Smoke gas toxicity NFPA 130 (SMP 800C)                           | passed      |

### Environmental and real-life conditions

#### Ambient conditions

|  |  |
|--|--|
| Ambient temperature (operation)          | -60 °C ... 110 °C (Operating temperature range incl. self-heating; for max. short-term operating temperature, see RTI Elec.) |
| Ambient temperature (storage/transport)  | -25 °C ... 60 °C (for a short time, no longer than 24 h, -60°C to +70°C)   |
| Ambient temperature (assembly)           | -5 °C ... 70 °C  |
| Ambient temperature (actuation)          | -5 °C ... 70 °C  |
| Permissible humidity (operation)         | 20 % ... 90 %  |
| Permissible humidity (storage/transport) | 30 % ... 70 %  |

### Mounting

|               |           |
|---------------|-----------|
| Mounting type | NS 35/7,5 |
|               | NS 35/15  |

# UTME 6-SET POWER 1 - Starter kit



3036001

<https://www.phoenixcontact.com/us/products/3036001>

## Classifications

### ECLASS

|             |          |
|-------------|----------|
| ECLASS-11.0 | 27141190 |
| ECLASS-13.0 | 27141190 |
| ECLASS-12.0 | 27141190 |

### ETIM

|          |          |
|----------|----------|
| ETIM 9.0 | EC002848 |
|----------|----------|

### UNSPSC

|             |          |
|-------------|----------|
| UNSPSC 21.0 | 39121400 |
|-------------|----------|

# UTME 6-SET POWER 1 - Starter kit



3036001

<https://www.phoenixcontact.com/us/products/3036001>

## Environmental product compliance

|            |   |
|------------|---|
| China RoHS | Environmentally friendly use period: unlimited = EFUP-e<br>No hazardous substances above threshold values |
|------------|---|

Phoenix Contact 2024 © - all rights reserved  
<https://www.phoenixcontact.com>

Phoenix Contact USA  
586 Fulling Mill Road  
Middletown, PA 17057, United States  
(+717) 944-1300  
[info@phoenixcon.com](mailto:info@phoenixcon.com)