

## Solid-state relay module - PLC-OSC-120UC/V8C/SEN - 2908175


Please be informed that the data shown in this PDF Document is generated from our Online Catalog. Please find the complete data in the user's documentation. Our General Terms of Use for Downloads are valid (<http://phoenixcontact.com/download>)



PLC-INTERFACE for input functions with PLC logic, with screw connection and plug-in miniature solid-state relay, for mounting on a DIN rail, 1 N/O contact, input: 120 V AC/110 V DC



### Key Commercial Data

|                                      |   |
|--------------------------------------|---|
| Packing unit                         | 1 pc  |
| Minimum order quantity               | 10 pc   |
| GTIN                                 | <br>4 055626 287362 |
| GTIN                                 | 4055626287362   |
| Weight per Piece (excluding packing) | 52.000 g  |
| Custom tariff number                 | 85364900  |
| Country of origin                    | Germany   |

### Technical data

#### Note

|                         |   |
|-------------------------|---|
| Utilization restriction | EMC: class A product, see manufacturer's declaration in the download area |
|-------------------------|---|

#### Dimensions

|        |        |
|--------|--------|
| Width  | 6.2 mm |
| Height | 80 mm  |
| Depth  | 94 mm  |

#### Ambient conditions

|   |                  |
|---|------------------|
| Ambient temperature (operation)         | -25 °C ... 60 °C |
| Ambient temperature (storage/transport) | -25 °C ... 70 °C |

## Solid-state relay module - PLC-OSC-120UC/V8C/SEN - 2908175

### Technical data

#### Input data

|  |                      |
|--|----------------------|
| Nominal input voltage $U_N$                          | 120 V AC (110 V DC)  |
|  | 110 V DC             |
| Input voltage range in reference to $U_N$            | 0.8 ... 1.1          |
| Input voltage range                                  | 96 V AC ... 132 V AC |
|  | 88 V DC ... 121 V DC |
| Switching threshold "0" signal in reference to $U_N$ | $\leq 0.3$           |
| Switching threshold "1" signal in reference to $U_N$ | $\geq 0.8$           |
| Typical input current at $U_N$                       | 3.5 mA               |
| Typical response time                                | 6 ms (at $U_N$ )     |
| Typical turn-off time                                | 10 ms (at $U_N$ )    |
| Operating voltage display                            | Yellow LED           |
| Type of protection                                   | Bridge rectifier     |
| Transmission frequency                               | 10 Hz                |
| Power dissipation for nominal condition              | 0.42 W               |

#### Output data

|  |                             |
|--|-----------------------------|
| Output voltage range                             | 5 V DC ... 30 V DC          |
| Limiting continuous current                      | 3 mA                        |
| Surge voltage protection                         | $> 56$ V                    |
| Voltage drop at max. limiting continuous current | $\leq 1$ V                  |
| Output circuit                                   | 2-conductor, floating       |
| Type of protection                               | Reverse polarity protection |
|  | Surge protection            |
| Protective circuit/component                     | Polarity protection diode   |

#### General

|  |                                      |
|--|--------------------------------------|
| Test voltage                           | 2.5 kV (50 Hz, 1 min., input/output) |
| Mounting position                      | any                                  |
| Assembly instructions                  | In rows with zero spacing            |
| Operating mode                         | 100% operating factor                |
| Flammability rating according to UL 94 | V0 (Housing)                         |

#### Connection data

|                               |  |
|-------------------------------|--|
| Connection name               | Input side                                   |
| Connection method             | Screw connection                             |
| Stripping length              | 8 mm   |
| Screw thread                  | M3   |
| Conductor cross section solid | 0.14 mm <sup>2</sup> ... 2.5 mm <sup>2</sup> |

# Solid-state relay module - PLC-OSC-120UC/V8C/SEN - 2908175

## Technical data

### Connection data

|                                  |  |
|----------------------------------|--|
| Conductor cross section flexible | 0.14 mm <sup>2</sup> ... 2.5 mm <sup>2</sup> |
| Conductor cross section AWG      | 26 ... 14                                    |

### Connection data 2

|                                  |  |
|----------------------------------|--|
| Connection name                  | Output side                                  |
| Connection method                | Screw connection                             |
| Stripping length                 | 8 mm   |
| Screw thread                     | M3   |
| Conductor cross section solid    | 0.14 mm <sup>2</sup> ... 2.5 mm <sup>2</sup> |
| Conductor cross section flexible | 0.14 mm <sup>2</sup> ... 2.5 mm <sup>2</sup> |
| Conductor cross section AWG      | 26 ... 14                                    |

### Standards and Regulations

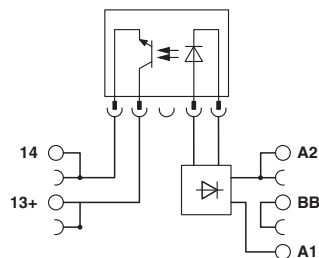
|                       |                       |
|-----------------------|-----------------------|
| Designation           | Standards/regulations |
| Standards/regulations | IEC 60664             |
|                       | EN 50178              |
| Insulation            | Basic insulation      |
| Pollution degree      | 2                     |
| Overvoltage category  | III                   |

### Environmental Product Compliance

|            |   |
|------------|---|
| REACH SVHC | Lead 7439-92-1  |
| China RoHS | Environmentally Friendly Use Period = 50 years  |
|            | For details about hazardous substances go to tab "Downloads", Category "Manufacturer's declaration" |

## Drawings

Circuit diagram



# Solid-state relay module - PLC-OSC-120UC/V8C/SEN - 2908175

## Classifications

eCl@ss

|               |          |
|---------------|----------|
| eCl@ss 10.0.1 | 27371604 |
| eCl@ss 11.0   | 27371604 |
| eCl@ss 5.0    | 27371001 |
| eCl@ss 5.1    | 27371001 |
| eCl@ss 6.0    | 27371600 |
| eCl@ss 7.0    | 27371604 |
| eCl@ss 9.0    | 27371604 |

ETIM

|          |          |
|----------|----------|
| ETIM 2.0 | EC001504 |
| ETIM 3.0 | EC001504 |
| ETIM 4.0 | EC001504 |
| ETIM 6.0 | EC001504 |
| ETIM 7.0 | EC001504 |

## Approvals

Approvals

---

Approvals

EAC / EAC

---

Ex Approvals

### Approval details

|     |   |                 |
|-----|---|-----------------|
| EAC |  | TR_TS_D_00573_c |
|-----|---|-----------------|

|     |   |                         |
|-----|---|-------------------------|
| EAC |  | RU*C-<br>DE.*08.B.00010 |
|-----|---|-------------------------|