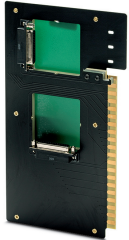


Interface card - 1771-CARDEDGE40/2XD25F - 2906297

Please be informed that the data shown in this PDF Document is generated from our Online Catalog. Please find the complete data in the user's documentation. Our General Terms of Use for Downloads are valid (<http://phoenixcontact.com/download>)




Allen-Bradley® PLC-5 migration board used to convert 1771 I/O and pre-wired 40-position swing arm (1771-WN) to 25-position (female) D-SUB sockets.

Your advantages

- ✓ Durable PCB designed to easily mount within 1771 chassis
- ✓ Card edge connection with locking tab
- ✓ Quick cable connection via two D-SUB 25 female connectors



Key Commercial Data

Packing unit	1 pc
GTIN	 4 055626 365602
GTIN	4055626365602
Weight per Piece (excluding packing)	550.000 g
Custom tariff number	85366990
Country of origin	United States

Technical data

Dimensions

Width	254 mm
Height	143.5 mm
Depth	21.3 mm

Ambient conditions

Ambient temperature (operation)	-40 °C ... 70 °C
Ambient temperature (storage/transport)	-40 °C ... 70 °C

Interface card - 1771-CARDEDGE40/2XD25F - 2906297

Technical data

General

Nominal voltage U_N	max. 125 V AC/DC
Max. perm. current (per branch)	2 A
Number of positions	40
Status display	No

Connection data

Connection name	PCB edge contact
Number of positions	40

Connection data 2

Connection name	Controller level
Connection method	D-SUB-25 female connector
Number of connections	2
Number of positions	25

Supported controller

Controller	Allen-Bradley® 1771 (PLC5)
- suitable I/O card	1771-IAN
	1771-IBN
	1771-ID16
	1771-IQ16
	1771-IVN
	1771-OBN
	1771-OD16
	1771-ODD
	1771-OQ16
	1771-OVN
	1771-OW16
	1771-OWN
	1771-OWNA
	1771-VHSC

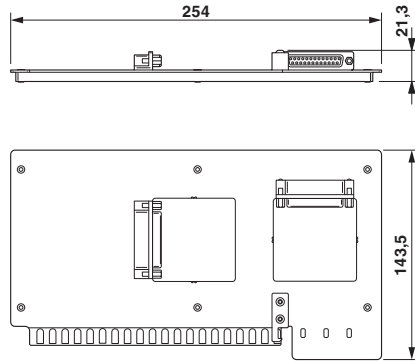
Environmental Product Compliance

REACH SVHC	Lead 7439-92-1
China RoHS	Environmentally Friendly Use Period = 50 years
	For details about hazardous substances go to tab "Downloads", Category "Manufacturer's declaration"

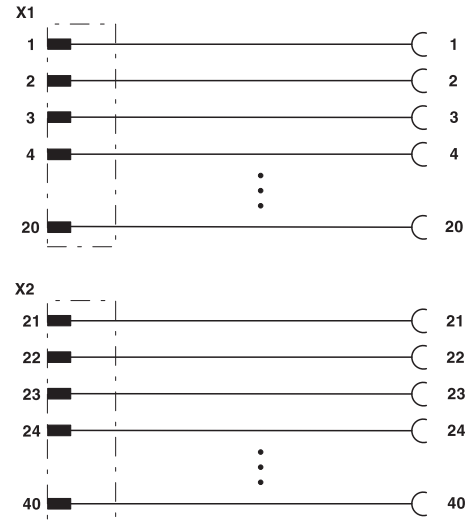
Drawings

Interface card - 1771-CARDEDGE40/2XD25F - 2906297

Dimensional drawing



Circuit diagram



Classifications

eCl@ss

eCl@ss 10.0.1	27141152
eCl@ss 11.0	27141152
eCl@ss 4.0	27250313
eCl@ss 4.1	27250313
eCl@ss 5.0	27250313
eCl@ss 5.1	27250313
eCl@ss 7.0	27141152
eCl@ss 9.0	27141152

ETIM

ETIM 4.0	EC002780
ETIM 6.0	EC002780
ETIM 7.0	EC002780