

TC-2KS40-AO16-EX-PR-CS - Module carrier



2905201

<https://www.phoenixcontact.com/us/products/2905201>

Please be informed that the data shown in this PDF document is generated from our online catalog. Please find the complete data in the user documentation. Our general terms of use for downloads are valid.



Termination carrier for redundantly connecting 16 MACX Analog Ex i signal conditioners to analog output cards of the Yokogawa Centum VP controller, via two KS40 connectors, 40-pos. Suitable for Yokogawa card AAI543.

Your advantages

- Mechanically decoupled, passive PCB
- Redundant system connection, 40-pos. (KS/AKB-compatible)
- Simple or redundant supply (decoupled from diode, protected against polarity reversal) and monitoring function implemented via separate DIN rail module
- Robust aluminum profile with integrated DIN rail
- Side parts with integrated end clamps
- Cable sets for signal connection are supplied as standard and do not have to be ordered separately

Commercial data

Item number	2905201
Packing unit	1 pc
Minimum order quantity	1 pc
Note	Made to order (non-returnable)
Product key	CK271C
Catalog page	Page 525 (C-5-2017)
GTIN	4046356951395
Weight per piece (including packing)	1.696 g
Weight per piece (excluding packing)	1.696 g
Country of origin	DE

TC-2KS40-AO16-EX-PR-CS - Module carrier



2905201

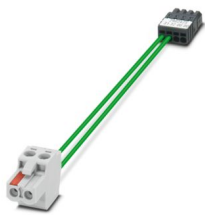
<https://www.phoenixcontact.com/us/products/2905201>

Set consists of

TC-C-MAX2-SC-31320000 - Cable set

2902425

<https://www.phoenixcontact.com/us/products/2902425>



Cable set for signal transmission on the Termination Carrier for modules from the MACX Analog Ex series. Connection of terminal points 3.1 and 3.2 (signal transmission) to the signal PCB.

TC-C-PTB3-SC-SET1 - Cable set

2905216

<https://www.phoenixcontact.com/us/products/2905216>



Cable set for TC-MACX-MCR-PTB power and fault signaling module (Item No. 2904673), for use on the Termination Carrier for signal conditioners from the MACX Analog Ex series.

TC-2KS40-AO16-EX-PR-CS - Module carrier

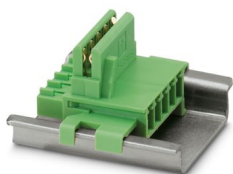
2905201

<https://www.phoenixcontact.com/us/products/2905201>

ME 17,5 TBUS 1,5/ 5-ST-3,81 GN - DIN rail bus connectors

2709561

<https://www.phoenixcontact.com/us/products/2709561>

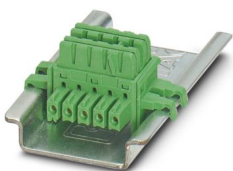


DIN rail connector for DIN rail mounting. Universal for TBUS housing. Gold-plated contacts, 5-pos.

ME 6,2 TBUS-2 1,5/5-ST-3,81 GN - DIN rail bus connectors

2869728

<https://www.phoenixcontact.com/us/products/2869728>



DIN rail connector for DIN rail mounting. Universal for TBUS housing. Gold-plated contacts, 5-pos.

Technical data

Notes

General	For proper use, the specifications of the installation directive (see Downloads) must be observed. For applications or use with third-party products, the specifications, and the safety and warning instructions of the respective third-party manufacturer must also be met.
---------	--------------------------------------------------------------------------------------------------------------------------------------------------------------------------------------------------------------------------------------------------------------------------------

Product properties

Product type	Module carrier
--------------	----------------

Insulation characteristics

Insulation	Basic insulation
------------	------------------

Insulation characteristics: Air clearances and creepage distances

Insulation	Basic insulation
Overvoltage category	II
Pollution degree	2

Electrical properties

Max. permissible current	1 A (Signal/channel)
Nominal voltage U_N	< 30 V DC (Per signal/channel)

Air clearances and creepage distances

Rated insulation voltage	50 V
Rated surge voltage	0.5 kV

Supported controller YOKOGAWA CENTUM VP

Suitable I/O card	AAI543
-------------------	--------

Supply

Designation	Power module
Note	Power supply via 2904673 TC-MACX-MCR-PTB power supply and error signaling module.
Fuse	2x 2.5 A on PCB, slow-blow (replaceable)
Input voltage	24 V DC
Input voltage range	19.2 V DC ... 30 V DC
Input current	≤ 2 A
Redundant supply	yes, decoupled from diodes
Polarization and surge protection	Yes
Output name	Switching output
Contact switching type	1 N/C contact (alarm = open)
Maximum switching voltage	30 V DC (2 A)
	33 V AC (2 A)
	33 V AC (2 A)

2905201

<https://www.phoenixcontact.com/us/products/2905201>

Connection data

Power supply

Connection method	Screw connection
Stripping length	7 mm
Number of connections	1
Number of positions	6
Conductor cross section rigid	0.14 mm ² ... 2.5 mm ²
Conductor cross section flexible	0.14 mm ² ... 2.5 mm ²
Conductor cross section AWG	24 ... 12

Controller level

Connection method	Yokogawa KS-compatible
Number of connections	2
Number of positions	40

Signaling

Status display	1 x red LED (error)
	2x green LEDs (PWR1 and PWR2)

Dimensions

Width	242 mm
Height	170 mm
Depth	159.5 mm

Material specifications

Flammability rating according to UL 94	V0
----------------------------------------	----

Environmental and real-life conditions

Ambient conditions

Degree of protection	IP00
Ambient temperature (operation)	-20 °C ... 60 °C (Please observe module specifications)
Ambient temperature (storage/transport)	-40 °C ... 80 °C
Altitude	≤ 2000 m
Permissible humidity (operation)	5 % ... 95 % (non-condensing)
Shock	15g, according to IEC 60068-2-27
Vibration (operation)	2g, according to IEC 60068-2-6

Approvals

UL, USA/Canada

Identification	UL 61010 Listed
	Class I, Div. 2, Groups A, B, C, D T4
	Class I, Zone 2, Group IIC

TC-2KS40-AO16-EX-PR-CS - Module carrier



2905201

<https://www.phoenixcontact.com/us/products/2905201>

Standards and regulations

Air clearances and creepage distances

Standards/regulations	DIN EN 50178
-----------------------	--------------

Mounting

Mounting type	DIN rail mounting
Assembly instructions	No end clamp
Mounting position	vertical, horizontal

TC-2KS40-AO16-EX-PR-CS - Module carrier



2905201

<https://www.phoenixcontact.com/us/products/2905201>

Classifications

ECLASS

ECLASS-11.0	27141152
ECLASS-13.0	27141152
ECLASS-12.0	27141152

ETIM

ETIM 9.0	EC002780
----------	----------

UNSPSC

UNSPSC 21.0	39121400
-------------	----------

TC-2KS40-AO16-EX-PR-CS - Module carrier



2905201

<https://www.phoenixcontact.com/us/products/2905201>

Environmental product compliance

REACH SVHC	Lead 7439-92-1
China RoHS	Environmentally Friendly Use Period = 50 years
	For information on hazardous substances, refer to the manufacturer's declaration available under "Downloads"

Phoenix Contact 2024 © - all rights reserved

<https://www.phoenixcontact.com>

Phoenix Contact USA
586 Fulling Mill Road
Middletown, PA 17057, United States
(+717) 944-1300
info@phoenixcon.com