

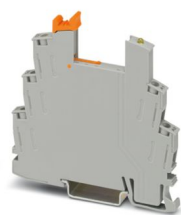
# RIF-0-BSC/21 - Relay base



2900957

<https://www.phoenixcontact.com/us/products/2900957>

Please be informed that the data shown in this PDF document is generated from our online catalog. Please find the complete data in the user documentation. Our general terms of use for downloads are valid.



RIF-0... relay base, for miniature power relay with 1 changeover contact or identical solid-state relays, screw connection, for mounting on NS 35/7,5

## Commercial data

Item number	2900957
Packing unit	10 pc
Minimum order quantity	10 pc
Sales key	C465
Product key	CK6511
Catalog page	Page 283 (C-5-2019)
GTIN	4046356733007
Weight per piece (including packing)	25.54 g
Weight per piece (excluding packing)	25 g
Customs tariff number	85366990
Country of origin	CN

# RIF-0-BSC/21 - Relay base

2900957

<https://www.phoenixcontact.com/us/products/2900957>



## Technical data

### Product properties

Product type	Relay socket
Product family	RIFLINE complete

### Electrical properties

Nominal voltage $U_N$	250 V AC/DC (Contact side)
Nominal current $I_N$	max. 8 A (Depends on application/assembly)
Protective circuit	Freewheeling diode

### Input data

Input voltage range	12 V DC ... 24 V DC
---------------------	---------------------

### Connection data

Connection method	Screw connection
Stripping length	7 mm
Conductor cross section rigid	0.5 mm <sup>2</sup> ... 4 mm <sup>2</sup>
Conductor cross-section rigid (2 conductors with same cross section)	0.5 mm <sup>2</sup> ... 1.5 mm <sup>2</sup>
Conductor cross section flexible	0.5 mm <sup>2</sup> ... 2.5 mm <sup>2</sup>
	0.5 mm <sup>2</sup> ... 2.5 mm <sup>2</sup> (Ferrules without plastic sleeve)
	0.5 mm <sup>2</sup> ... 1.5 mm <sup>2</sup> (Ferrule with plastic sleeve)
Conductor cross section flexible (2 conductors with same cross section)	0.5 mm <sup>2</sup> ... 1.5 mm <sup>2</sup>
	0.5 mm <sup>2</sup> ... 1 mm <sup>2</sup> (TWIN ferrule with plastic sleeve)
Conductor cross section AWG	20 ... 12 (solid)
	20 ... 14 (flexible)
Tightening torque	0.5 Nm ... 0.6 Nm

### Dimensions

Width	6.2 mm
Height	84 mm
Depth	82 mm

### Material specifications

Color	gray (RAL 7042)
Flammability rating according to UL 94	V2 (Housing)

### Environmental and real-life conditions

#### Ambient conditions

Ambient temperature (operation)	-40 °C ... 85 °C (Depends on application/assembly)
Ambient temperature (storage/transport)	-40 °C ... 85 °C

### Approvals

# RIF-0-BSC/21 - Relay base



2900957

<https://www.phoenixcontact.com/us/products/2900957>

## Corrosive gas test

Identification	ISA-S71.04. G3 Harsh Group
	EN 60068-2-60

## Mounting

Mounting type	DIN rail mounting
Assembly instructions	in rows with zero spacing
Mounting position	any

# RIF-0-BSC/21 - Relay base

2900957

<https://www.phoenixcontact.com/us/products/2900957>



## Classifications

### ECLASS

ECLASS-11.0	27371603
ECLASS-12.0	27371603
ECLASS-13.0	27371603

### ETIM

ETIM 9.0	EC001456
----------	----------

### UNSPSC

UNSPSC 21.0	39122300
-------------	----------

# RIF-0-BSC/21 - Relay base

2900957

<https://www.phoenixcontact.com/us/products/2900957>



## Environmental product compliance

REACH SVHC	Lead 7439-92-1
China RoHS	Environmentally Friendly Use Period = 50 years
	For information on hazardous substances, refer to the manufacturer's declaration available under "Downloads"

Phoenix Contact 2024 © - all rights reserved  
<https://www.phoenixcontact.com>

Phoenix Contact USA  
586 Fulling Mill Road  
Middletown, PA 17057, United States  
(+717) 944-1300  
[info@phoenixcon.com](mailto:info@phoenixcon.com)