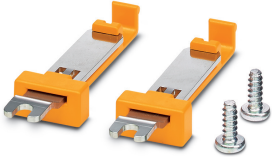



Mounting material - PLD E 608-ME SM - 2702316

Please be informed that the data shown in this PDF Document is generated from our Online Catalog. Please find the complete data in the user's documentation. Our General Terms of Use for Downloads are valid (<http://phoenixcontact.com/download>)

Set for screw mounting of class 600 PLD enclosure lights, including screws



Key Commercial Data

Packing unit	1 pc
GTIN	 4 0 5 5 6 2 6 1 2 4 8 5 8
GTIN	4055626124858
Weight per Piece (excluding packing)	30.000 g
Custom tariff number	94059900
Country of origin	Germany

Technical data

Dimensions

Width	25.4 mm
Height	12.4 mm
Depth	94.2 mm

Ambient conditions

Ambient temperature (operation)	-25 °C ... 60 °C
---------------------------------	------------------

General

Color	orange
Net weight	46.8 g

Environmental Product Compliance

Mounting material - PLD E 608-ME SM - 2702316

Technical data

Environmental Product Compliance

China RoHS	Environmentally friendly use period: unlimited = EFUP-e
	No hazardous substances above threshold values

Classifications

eCl@ss

eCl@ss 10.0.1	27111126
eCl@ss 11.0	27111126
eCl@ss 4.0	27142500
eCl@ss 4.1	27142500
eCl@ss 5.0	27142500
eCl@ss 5.1	27142500
eCl@ss 7.0	27119220
eCl@ss 9.0	27111126

ETIM

ETIM 6.0	EC002557
ETIM 7.0	EC002557

UNSPSC

UNSPSC 13.2	39121311
UNSPSC 18.0	39121311
UNSPSC 19.0	39121311
UNSPSC 20.0	39121311
UNSPSC 21.0	39121311