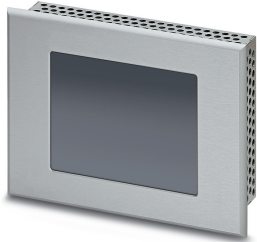


## Touch panel - TP35AM/702000 S00001 - 2401032


Please be informed that the data shown in this PDF Document is generated from our Online Catalog. Please find the complete data in the user's documentation. Our General Terms of Use for Downloads are valid (<http://phoenixcontact.com/download>)



Touch panel with 8,9 cm / 3,5"-FSTN-display (analog resistive (polyester)), 320 x 240 pixel(s) (QVGA), 256-step grayscale, Arm9™, 200 MHz, 2x USB host 2.0, 1 x Ethernet (10/100 Mbps), RJ45, Windows CE 5.0 and user software: TSvisRT. (bus system: without)



### Key Commercial Data

Packing unit	1
GTIN	 4 055626 096926
GTIN	4055626096926
Custom tariff number	84714100

### Technical data

#### Note

Utilization restriction	EMC: class A product, see manufacturer's declaration in the download area
-------------------------	---

#### Dimensions

Outer dimensions: width, height, depth	120 mm x 90 mm x 5 mm (Dimensions of the front plate)
Installation dimensions: width, height, depth	112 mm x 82 mm x 47 mm (Mounting cutout, depth with bus if bus system present in the device)

#### Display

Display type	8,9 cm / 3,5"-FSTN
Screen resolution	320 x 240 Pixel(s) (QVGA)
Touch technology	analog resistive (polyester)
Brightness	350 cd/m <sup>2</sup> , typical (adjustable)
Backlighting	LED

# Touch panel - TP35AM/702000 S00001 - 2401032

## Technical data

### Display

Display backlight MTBF	40000 h
Colors	256-step grayscale
Reading angle left	75 °
Reading angle right	75 °
Reading angle top	55 °
Reading angle bottom	75 °

### Computer data

Processor	Arm9™, 200 MHz
Operating system	Windows® CE 5.0
User software	TSvisRT
RAM	64 MB SDRAM 512 KB SRAM
Mass storage	NOR-Flash, 32 MB
Network	1 x Ethernet (10/100 Mbps), RJ45
Interfaces	2x USB Host 2.0
Bus system	without
Optional interfaces	none
Realtime clock	Yes
Service life of battery	5 years (typical)

### General

Material front plate	Aluminum (natural anodized)
Housing material	Steel sheet, zinc-plated
Mounting type	Front installation
Weight	1700 g

### Ambient conditions

Degree of protection	IP65 (front), IP20 (back) NEMA 4X
Ambient temperature (operation)	0 °C ... 50 °C
Ambient temperature (storage/transport)	-25 °C ... 70 °C
Permissible humidity (operation)	20 % ... 85 %
Vibration (operation)	1g, according to EN 60068-2-6
Shock	15g, according to IEC 60068-2-27

### Device supply

Typical current consumption	0.25 A
Power supply unit	24 V DC +/- 20 %

# Touch panel - TP35AM/702000 S00001 - 2401032

## Technical data

### Standards and Regulations

Shock	15g, according to IEC 60068-2-27
Vibration (operation)	1g, according to EN 60068-2-6

### Environmental Product Compliance

REACH SVHC	Lead 7439-92-1
China RoHS	Environmentally Friendly Use Period = 15;
	For details about hazardous substances go to tab "Downloads", Category "Manufacturer's declaration"

## Classifications

### eCl@ss

eCl@ss 10.0.1	27330201
eCl@ss 11.0	27330201
eCl@ss 4.0	27330200
eCl@ss 4.1	27330200
eCl@ss 5.0	27330200
eCl@ss 5.1	27330200
eCl@ss 6.0	27242300
eCl@ss 7.0	27242302
eCl@ss 9.0	27330201

### ETIM

ETIM 4.0	EC001412
ETIM 6.0	EC001412
ETIM 7.0	EC001412

### UNSPSC

UNSPSC 13.2	43211904
UNSPSC 18.0	43211904
UNSPSC 19.0	43211904
UNSPSC 20.0	43211904
UNSPSC 21.0	43211904

## Approvals

### Approvals

---

# Touch panel - TP35AM/702000 S00001 - 2401032

## Approvals

Approvals




UL Listed / cUL Listed / cULus Listed

---

Ex Approvals

---

### Approval details

UL Listed		<a href="http://database.ul.com/cgi-bin/XYVV/template/LISEXT/1FRAME/index.htm">http://database.ul.com/cgi-bin/XYVV/template/LISEXT/1FRAME/index.htm</a>	FILE E 205795
cUL Listed		<a href="http://database.ul.com/cgi-bin/XYVV/template/LISEXT/1FRAME/index.htm">http://database.ul.com/cgi-bin/XYVV/template/LISEXT/1FRAME/index.htm</a>	FILE E 205795
cULus Listed			

---