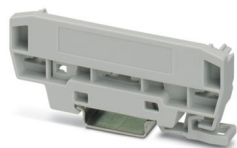


Please be informed that the data shown in this PDF document is generated from our online catalog. Please find the complete data in the user documentation. Our general terms of use for downloads are valid.

Lateral element (left) with mounting foot for DIN rails for UM-BASIC profiles with a PCB width of 72 mm



Your advantages

- Different base profiles, each with three PCB levels
- Module covers of different geometries can be positioned in any way
- Compatibility with many standard connection technologies
- Easy device mounting thanks to snap-mount principle (the sides are fixed without the aid of tools)
- High degree of flexibility, thanks to freely positionable covering hoods

Commercial data

Item number	2202018
Packing unit	10 pc
Minimum order quantity	10 pc
Sales key	AC13
Product key	ACHDAC
GTIN	4055626004594
Weight per piece (including packing)	14.86 g
Weight per piece (excluding packing)	14.36 g
Customs tariff number	39269097
Country of origin	PL

Technical data

Notes

General	Refer to the data sheet for the range in the download area.
---------	---

Product properties

Product type	Panel mounting base side part
Housing series	UM-BASIC
Product family	UM-BASIC/PRO 72
Type	Side element (left) with mounting foot for the DIN rail
Housing type	Press-drawn section housings

Dimensions

Width	19.5 mm
Height	92.3 mm
Depth	39.45 mm
Depth from top edge of DIN rail	32.45 mm

PCB design

PCB thickness	1.4 mm ... 1.8 mm
---------------	-------------------

Material specifications

Color (Housing)	light grey (RAL 7035)
Flammability rating according to UL 94	V0
Housing material	Polyamide

Environmental and real-life conditions

Glow-wire test

Specification	IEC 60695-2-11:2014-02
Temperature	850 °C
Time of exposure	30 s

Thermal stability / ball thrust test

Specification	IEC 60695-10-2:2014-02
Temperature	125 °C
Test duration	1 h
Force	20 N

Mechanical strength / tumbling barrel

Specification	IEC 60068-2-31:2008-05
Height of fall	50 cm
Frequency	50

Degree of protection (IP code)

Specification	IEC 60529:1989-11 + AMD 1:1999-11 + AMD 2:2013-08
---------------	---

2202018

<https://www.phoenixcontact.com/us/products/2202018>

Ambient conditions

Max. IP code to attain	IP20
Ambient temperature (operation)	-40 °C ... 105 °C (depending on power dissipation)
Ambient temperature (storage/transport)	-40 °C ... 55 °C
Ambient temperature (assembly)	-5 °C ... 100 °C
Relative humidity (storage/transport)	80 %

PCB data

Number of PCB holders	3
Type of PCB mount	Insertion/securing with additional elements
PCB surface	700 mm ² ... 1200 mm ² (per basic profile cm)
Thickness of the PCB	1.4 mm ... 1.8 mm

Mounting

Mounting type	DIN rail mounting/wall mounting (with optional mounting flange)
---------------	---

Packaging specifications

Type of packaging	packed in cardboard
Outer packaging type	Carton



Classifications

ECLASS

ECLASS-11.0	27182701
ECLASS-13.0	27190602

ETIM

ETIM 9.0	EC002779
----------	----------

UNSPSC

UNSPSC 21.0	31261500
-------------	----------



Environmental product compliance

China RoHS	Environmentally friendly use period: unlimited = EFUP-e
	No hazardous substances above threshold values

Phoenix Contact 2024 © - all rights reserved
<https://www.phoenixcontact.com>

Phoenix Contact USA
586 Fulling Mill Road
Middletown, PA 17057, United States
(+717) 944-1300
info@phoenixcon.com