

Screw - CUC-DST-AM/DSBP - 1419796


Please be informed that the data shown in this PDF Document is generated from our Online Catalog. Please find the complete data in the user's documentation. Our General Terms of Use for Downloads are valid (<http://phoenixcontact.com/download>)



Latch screw, 4-40 UNC thread, for rear mounting, max. housing panel thickness 1.5 mm



Key Commercial Data

Packing unit	1
GTIN	 4 055626 188256
GTIN	4055626188256
Custom tariff number	73181562

Technical data

Mechanical characteristics

Weight	1.1 g
--------	-------

Material data

Cable gland material	Steel, tin-plated
Width	6.5 mm
Height	6.5 mm
Length	12.7 mm
Depth	17.2 mm
Mounting type	M3

Environmental Product Compliance

REACH SVHC	Lead 7439-92-1
China RoHS	Environmentally friendly use period: unlimited = EFUP-e

Screw - CUC-DST-AM/DSBP - 1419796

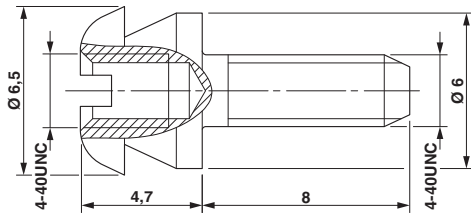
Technical data

Environmental Product Compliance

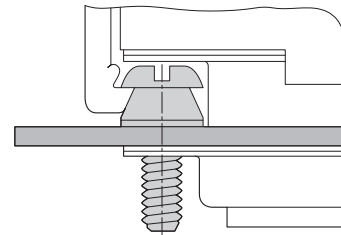
	No hazardous substances above threshold values
--	--

Drawings

Dimensional drawing



Schematic diagram



Screw

Assembly instruction: rear mounting with latch screw

Classifications

eCl@ss

eCl@ss 10.0.1	27440302
eCl@ss 11.0	27440302
eCl@ss 4.0	27260700
eCl@ss 4.1	27260700
eCl@ss 5.0	27260700
eCl@ss 5.1	27261200
eCl@ss 6.0	27261200
eCl@ss 7.0	27440302
eCl@ss 9.0	27440302

ETIM

ETIM 2.0	EC000437
ETIM 3.0	EC000437
ETIM 4.0	EC000437
ETIM 6.0	EC001132
ETIM 7.0	EC001132

UNSPSC

UNSPSC 6.01	31261501
UNSPSC 7.0901	31261501
UNSPSC 11	31261501

Screw - CUC-DST-AM/DSBP - 1419796

Classifications

UNSPSC

UNSPSC 12.01	31261501
UNSPSC 13.2	39121522
UNSPSC 18.0	39121522
UNSPSC 19.0	39121522
UNSPSC 20.0	39121522
UNSPSC 21.0	39121522

Approvals

Approvals

Approvals

EAC

Ex Approvals

Approval details

EAC		B.01742
-----	---	---------
