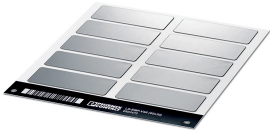



Equipment marking - LS-EMP-V4A (80X30) - 0803475

Please be informed that the data shown in this PDF Document is generated from our Online Catalog. Please find the complete data in the user's documentation. Our General Terms of Use for Downloads are valid (<http://phoenixcontact.com/download>)

Equipment marking, Stainless steel label, not polished, silver, unlabeled, can be labeled with: TOPMARK NEO, TOPMARK LASER, mounting type: snapped into marker carrier, lettering field size: 80 x 30 mm, Number of individual labels: 10



Key Commercial Data

| | |
|--------------------------------------|---|
| Packing unit | 1 pc |
| Minimum order quantity | 5 pc |
| GTIN |  4 055626 077918 |
| GTIN | 4055626077918 |
| Weight per Piece (excluding packing) | 144.000 g |
| Custom tariff number | 73269098 |
| Country of origin | Germany |

Technical data

Dimensions

| | |
|------------|-------|
| Length (b) | 30 mm |
| Width (a) | 80 mm |

Ambient conditions

| | |
|---------------------------------|---|
| Ambient temperature (operation) | -80 °C ... 400 °C |
| Recommended storage conditions | 23 °C/50 % relative humidity. Storage in a dry and dark place in the original packaging is recommended. |

General

| | |
|------------|--|
| Color | silver |
| Components | free from silicone, halogen, and cadmium |

Equipment marking - LS-EMP-V4A (80X30) - 0803475

Technical data

General

| | |
|-------------------------------------|-----------------------------|
| Material | V4A |
| Wipe resistance | DIN EN 61010-1 (VDE 0411-1) |
| Number of individual labels | 10 |
| Number of individual labels per row | 2 |
| Marking mounting type | snapped into marker carrier |

Standards and Regulations

| | |
|-----------------|-----------------------------|
| Wipe resistance | DIN EN 61010-1 (VDE 0411-1) |
|-----------------|-----------------------------|

Classifications

eCl@ss

| | |
|---------------|----------|
| eCl@ss 10.0.1 | 27400629 |
| eCl@ss 11.0 | 27281103 |
| eCl@ss 5.0 | 27149100 |
| eCl@ss 5.1 | 27141100 |
| eCl@ss 6.0 | 27149100 |
| eCl@ss 7.0 | 27149129 |
| eCl@ss 9.0 | 27400629 |

ETIM

| | |
|----------|----------|
| ETIM 6.0 | EC001288 |
| ETIM 7.0 | EC001288 |

UNSPSC

| | |
|-------------|----------|
| UNSPSC 13.2 | 39131504 |
| UNSPSC 18.0 | 39131504 |
| UNSPSC 19.0 | 39131504 |
| UNSPSC 20.0 | 39131504 |
| UNSPSC 21.0 | 39131504 |