

PLD M-ME MB/D40 - Mounting bracket

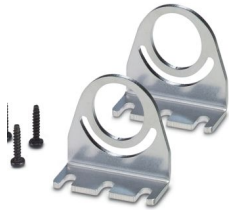


2702527

<https://www.phoenixcontact.com/us/products/2702527>

Please be informed that the data shown in this PDF document is generated from our online catalog. Please find the complete data in the user documentation. Our general terms of use for downloads are valid.

Mounting bracket, for machine lights PLD M 260 .../D40, Swiveling range $\pm 45^\circ$



Commercial data

Item number	2702527
Packing unit	1 pc
Minimum order quantity	1 pc
Sales key	DR08
Product key	DRL22Z
Catalog page	Page 504 (C-6-2019)
GTIN	4055626217079
Weight per piece (including packing)	44 g
Weight per piece (excluding packing)	43.4 g
Customs tariff number	94059900
Country of origin	DE

PLD M-ME MB/D40 - Mounting bracket



2702527

<https://www.phoenixcontact.com/us/products/2702527>

Technical data

Product properties

Product type	Assembly element
Special properties	for machine lights PLD M 260 .../D40
	Swiveling range $\pm 45^\circ$

Material specifications

Color	Bare metallic
Material ()	Steel (stainless, 2A (X5CrNi-18-10))

Mounting

Mounting type	PLD machine light
---------------	-------------------

PLD M-ME MB/D40 - Mounting bracket



2702527

<https://www.phoenixcontact.com/us/products/2702527>

Classifications

ECLASS

ECLASS-11.0	27111126
ECLASS-12.0	27111126
ECLASS-13.0	27111126

ETIM

ETIM 9.0	EC002557
----------	----------

UNSPSC

UNSPSC 21.0	39111500
-------------	----------

PLD M-ME MB/D40 - Mounting bracket



2702527

<https://www.phoenixcontact.com/us/products/2702527>

Environmental product compliance

REACH SVHC	Lead 7439-92-1
China RoHS	Environmentally Friendly Use Period = 50 years
	For information on hazardous substances, refer to the manufacturer's declaration available under "Downloads"

Phoenix Contact 2024 © - all rights reserved

<https://www.phoenixcontact.com>

Phoenix Contact USA
586 Fulling Mill Road
Middletown, PA 17057, United States
(+717) 944-1300
info@phoenixcon.com