

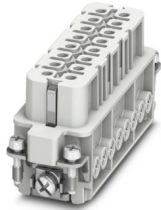
HC-A16-I-UT-F - Contact insert



1585320

<https://www.phoenixcontact.com/us/products/1585320>

Please be informed that the data shown in this PDF document is generated from our online catalog. Please find the complete data in the user documentation. Our general terms of use for downloads are valid.



Contact insert, number of positions: 16+PE, size: D25, number of connections per position: 1, Socket, Screw connection, 250 V, 16 A, 0.5 mm² ... 2.5 mm²

Your advantages

- Can be coded with plastic coding profile (order number 1410916)
- For a test pin 2 mm in diameter

Commercial data

| | |
|--------------------------------------|---------------------|
| Item number | 1585320 |
| Packing unit | 1 pc |
| Minimum order quantity | 1 pc |
| Sales key | BF61 |
| Product key | BF7ABB |
| Catalog page | Page 521 (C-2-2019) |
| GTIN | 4046356285056 |
| Weight per piece (including packing) | 65.26 g |
| Weight per piece (excluding packing) | 64.016 g |
| Customs tariff number | 85366990 |
| Country of origin | CN |

HC-A16-I-UT-F - Contact insert



1585320

<https://www.phoenixcontact.com/us/products/1585320>

Technical data

Notes

| | |
|---------|--|
| General | for flexible conductors with or without ferrules |
| General | Connectors may be operated only when there is no load/voltage. |
| General | for HC-D25 / HC-D 50 housing |

Mounting

| | |
|-----------------------|--|
| Assembly instructions | To ensure correct use, installation in housing with IP54 protection or better is required for plastic coding profiles: 4 pcs. |
|-----------------------|--|

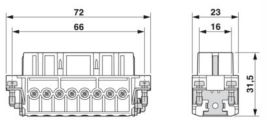
Product properties

| | |
|------------------------------------|--|
| Type | D25 D50 |
| Product type | Contact insert with a fixed no. of positions |
| Number of positions | 16 |
| Connection profile | 16+PE |
| Contact numbering | 1 - 16 |
| Number of connections per position | 1 |
| Contact material type | turned |
| Series | HC-A |
| Screwdriver blade | 0.5 x 3.5 mm |

Insulation characteristics

| | |
|----------------------|-----|
| Overvoltage category | III |
| Degree of pollution | 3 |

Dimensions

| | |
|---------------------------------|--|
| Dimensional drawing |  |
| Width | 23 mm |
| Height | 33 mm |
| Length | 72 mm |
| Drill hole distance, horizontal | 66 mm |
| Drill hole distance, vertical | 16 mm |

Mechanical characteristics

| | |
|------------------|--------|
| Contact diameter | 2.5 mm |
|------------------|--------|

Connection data

Connection technology

HC-A16-I-UT-F - Contact insert



1585320

<https://www.phoenixcontact.com/us/products/1585320>

| | |
|------------------------------------|------------------|
| Connection technology | Screw connection |
| Number of connections per position | 1 |
| Connection in acc. with standard | IEC / EN |

Conductor connection

| | |
|---|--|
| Conductor cross section | 0.5 mm ² ... 2.5 mm ² |
| Connection cross section AWG | 20 ... 14 |
| Tightening torque | 0.7 Nm ... 1 Nm (PE connection) |
| | 0.5 Nm ... 0.8 Nm (Mounting screws for mounting in the HEAVYCON housing) |
| | 0.5 Nm |
| Stripping length of the individual wire | 7 mm |

Electrical properties

| | |
|-----------------------|----------------|
| Rated voltage (III/3) | 250 V |
| Rated surge voltage | 4 kV |
| | 4 kV |
| Rated current | 16 A |
| SCCR | 5 kA (UL 2237) |

Mechanical properties

Mechanical data

| | |
|-----------------------------|-------|
| Insertion/withdrawal cycles | ≥ 500 |
|-----------------------------|-------|

Material specifications

| | |
|--|---|
| Flammability rating according to UL 94 | V0 |
| Contact material | Copper alloy |
| Contact surface material | Ag |
| Contact carrier material | PC |
| Standards/regulations | PC: Fire protection in rail vehicles - requirement sets R22, R23, and R24 acc. to DIN EN 45545-2 (Risk level HL1 - HL3) |

Environmental and real-life conditions

Ambient conditions

| | |
|---------------------------------|--|
| Ambient temperature (operation) | -40 °C ... 125 °C (including heating up of contacts) |
|---------------------------------|--|

Standards and regulations

Testing

| | |
|-----------------------|---|
| Standards/regulations | PC: Fire protection in rail vehicles - requirement sets R22, R23, and R24 acc. to DIN EN 45545-2 (Risk level HL1 - HL3) |
|-----------------------|---|

HC-A16-I-UT-F - Contact insert



1585320

<https://www.phoenixcontact.com/us/products/1585320>

Classifications

ECLASS

| | |
|-------------|----------|
| ECLASS-11.0 | 27440205 |
| ECLASS-12.0 | 27440205 |
| ECLASS-13.0 | 27440205 |

ETIM

| | |
|----------|----------|
| ETIM 9.0 | EC000438 |
|----------|----------|

UNSPSC

| | |
|-------------|----------|
| UNSPSC 21.0 | 39121500 |
|-------------|----------|

HC-A16-I-UT-F - Contact insert



1585320

<https://www.phoenixcontact.com/us/products/1585320>

Environmental product compliance

| | |
|------------|--|
| REACH SVHC | Lead 7439-92-1 |
| China RoHS | Environmentally Friendly Use Period = 50 years |
| | For information on hazardous substances, refer to the manufacturer's declaration available under "Downloads" |

Phoenix Contact 2024 © - all rights reserved

<https://www.phoenixcontact.com>

Phoenix Contact USA
586 Fulling Mill Road
Middletown, PA 17057, United States
(+717) 944-1300
info@phoenixcon.com