

HC-STA-B10PT-BWSC-LT-M25-ELCAL - Connector set



1416345

<https://www.phoenixcontact.com/us/products/1416345>

Please be informed that the data shown in this PDF document is generated from our online catalog. Please find the complete data in the user documentation. Our general terms of use for downloads are valid.

Connector set, number of positions: 10, connection method: Push-in connection, connection cross section: AWG 26- 14



Commercial data

| | |
|--------------------------------------|---------------------|
| Item number | 1416345 |
| Packing unit | 1 pc |
| Minimum order quantity | 1 pc |
| Sales key | BF63 |
| Product key | BF7AFX |
| Catalog page | Page 638 (C-2-2017) |
| GTIN | 4055626069883 |
| Weight per piece (including packing) | 505.3 g |
| Weight per piece (excluding packing) | 491.9 g |
| Customs tariff number | 85366990 |
| Country of origin | CN |

HC-STA-B10PT-BWSC-LT-M25-ELCAL - Connector set



1416345

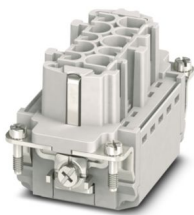
<https://www.phoenixcontact.com/us/products/1416345>

Set consists of

HC-B10-I-PT-F - Contact insert

1407729

<https://www.phoenixcontact.com/us/products/1407729>

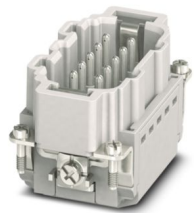


Contact insert, number of positions: 10+PE, size: B10, number of connections per position: 1, Socket, Push-in connection, 500 V, 16 A, 0.14 mm² ... 2.5 mm², application: Power

HC-B10-I-PT-M - Contact insert

1407730

<https://www.phoenixcontact.com/us/products/1407730>



Contact insert, number of positions: 10+PE, size: B10, number of connections per position: 1, Pin, Push-in connection, 500 V, 16 A, 0.14 mm² ... 2.5 mm², application: Power

HC-STA-B10PT-BWSC-LT-M25-ELCAL - Connector set



1416345

<https://www.phoenixcontact.com/us/products/1416345>

HC-STA-B10-BWSC-ELC-AL - Housing

1411321

<https://www.phoenixcontact.com/us/products/1411321>



Panel mounting base B10, with single locking latch, material: Die-cast aluminum, salt water resistant, protective cover material: PC, height: 30.5 mm, cable gland: none, protective cover: yes, Standard, with flat gasket

HC-STA-B10-HLFS-1TTM25-EL-AL - Housing

1412630

<https://www.phoenixcontact.com/us/products/1412630>



Sleeve housing B10, for single locking latch, material: Die-cast aluminum, salt water resistant, cable outlets: 1, straight, 1x M25, height: 57 mm, cable gland: none, Standard

HC-STA-B10PT-BWSC-LT-M25-ELCAL - Connector set

1416345

<https://www.phoenixcontact.com/us/products/1416345>

G-INS-M25-M68N-NNES-S - Cable gland

1411165

<https://www.phoenixcontact.com/us/products/1411165>



Cable gland, material for screw connection: Brass, nickel-plated, external cable diameter 11 mm ... 17 mm, shielding: no, connecting thread: M25 x 1.5, color: silver, with O-ring

HC-STA-B10PT-BWSC-LT-M25-ELCAL - Connector set



1416345

<https://www.phoenixcontact.com/us/products/1416345>

Technical data

Product properties

| | |
|----------------------|------------------|
| Type | B10 |
| Product type | Connector set |
| Number of positions | 10 |
| Connection profile | 10+PE |
| Application | Standard |
| No. of cable outlets | 1 |
| Housing type | Complete housing |
| Seal present | yes |
| Protective cover | yes |
| Series | HC-B |

Insulation characteristics

| | |
|----------------------|-----|
| Overvoltage category | III |
| Degree of pollution | 3 |

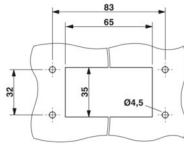
Electrical properties

| | |
|-----------------------|-------|
| Rated voltage (III/3) | 500 V |
| Rated surge voltage | 6 kV |
| Rated current | 16 A |

Connection data

| | |
|------------------------------|--|
| Connection method | Push-in connection |
| Connection technology | Push-in connection |
| Conductor cross section | 0.14 mm ² ... 2.5 mm ² (with ferrule) 0.14 mm ² ... 2.5 mm ² (with ferrule) |
| Connection cross section AWG | 26 ... 14 |
| Stripping length | 8 mm ... 10 mm |

Dimensions

| | |
|---------------------------------|--|
| Dimensional drawing |  |
| Width | 53 mm |
| Height | 87.5 mm |
| Length | 93.5 mm |
| Drill hole distance, horizontal | 83 mm |
| Drill hole distance, vertical | 32 mm |
| Hole diameter | 4.5 mm |

HC-STA-B10PT-BWSC-LT-M25-ELCAL - Connector set



1416345

<https://www.phoenixcontact.com/us/products/1416345>

Installation dimensions

| | |
|-------------------------------|-------|
| Width of the assembly cutout | 35 mm |
| Length of the assembly cutout | 65 mm |

Material specifications

| | |
|--|--|
| Material Housing | Die-cast aluminum, saltwater-resistant |
| Material Protective cover | PA |
| Flammability rating according to UL 94 | V0 |
| Seal material Profile gasket | NBR |
| Seal material Flat gasket | NBR |
| Contact material | Copper alloy |
| Contact surface material | Ag |
| Contact carrier material | PC |
| Locking latch material | PA |
| Impact strength | IK08 |

Cable/line

| | |
|-----------------------------|--------------------------------|
| External cable diameter () | 11 mm ... 17 mm |
| | 14 mm ... 17 mm (for UL 514 B) |

Mechanical properties

Mechanical data

| | |
|-----------------------------|-------|
| Locking type | Latch |
| Insertion/withdrawal cycles | ≥ 500 |

Environmental and real-life conditions

Ambient conditions

| | |
|---------------------------------|-------------------|
| Degree of protection | IP66 |
| | IP67 |
| Impact strength | IK08 |
| Ambient temperature (operation) | -40 °C ... 100 °C |

Mounting

| | |
|-----------------------|--|
| Mounting type | Screw mounting |
| Assembly instructions | Coding also using the CP-HC (1686478) coding profiles. HC-B6.. / HC-B10..for two coding profiles. HC-B16.. / HC-B24..for four coding profiles. |
| | Connectors may only be operated when there is no load/the power is switched off. Can be used for solid wires and stranded wires with ferrule. |

HC-STA-B10PT-BWSC-LT-M25-ELCAL - Connector set



1416345

<https://www.phoenixcontact.com/us/products/1416345>

Classifications

ECLASS

| | |
|-------------|----------|
| ECLASS-11.0 | 27440101 |
| ECLASS-12.0 | 27440113 |
| ECLASS-13.0 | 27440113 |

ETIM

| | |
|----------|----------|
| ETIM 9.0 | EC002636 |
|----------|----------|

UNSPSC

| | |
|-------------|----------|
| UNSPSC 21.0 | 39121400 |
|-------------|----------|

HC-STA-B10PT-BWSC-LT-M25-ELCAL - Connector set



1416345

<https://www.phoenixcontact.com/us/products/1416345>

Environmental product compliance

| | |
|------------|--|
| REACH SVHC | Lead 7439-92-1 |
| China RoHS | Environmentally Friendly Use Period = 50 years |
| | For information on hazardous substances, refer to the manufacturer's declaration available under "Downloads" |

Phoenix Contact 2024 © - all rights reserved

<https://www.phoenixcontact.com>

Phoenix Contact USA
586 Fulling Mill Road
Middletown, PA 17057, United States
(+717) 944-1300
info@phoenixcon.com