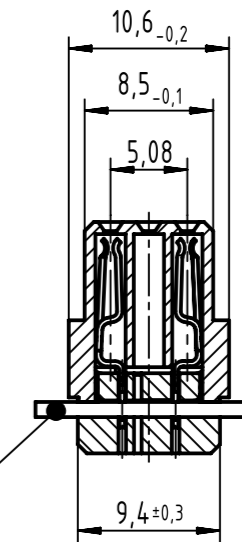


64 contacts

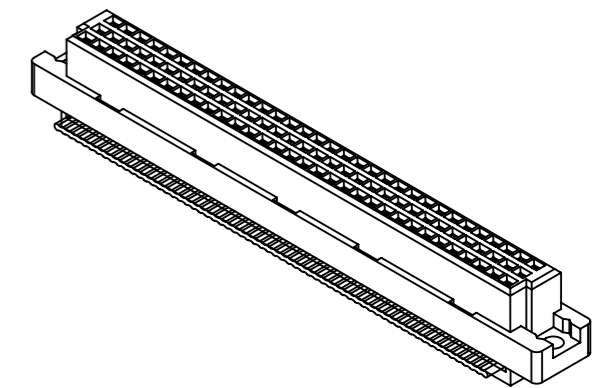
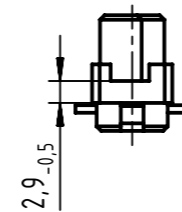
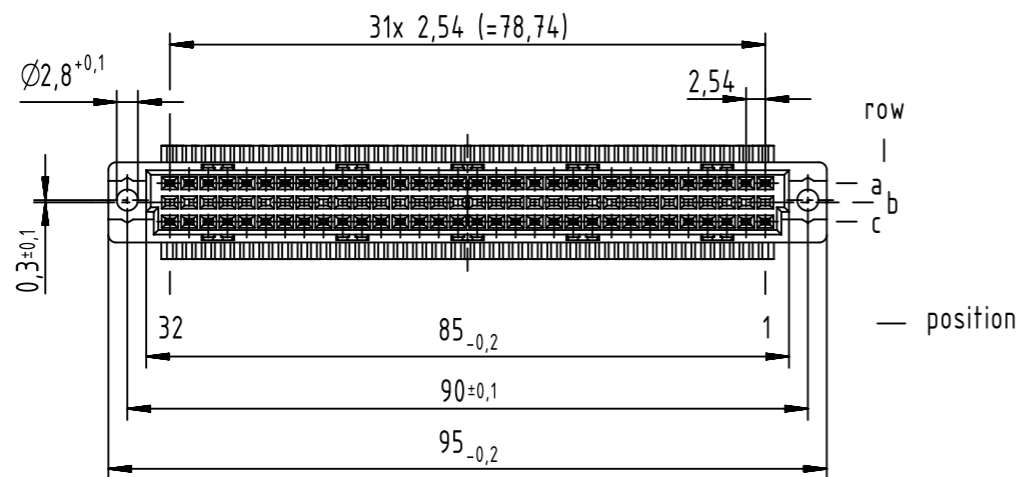
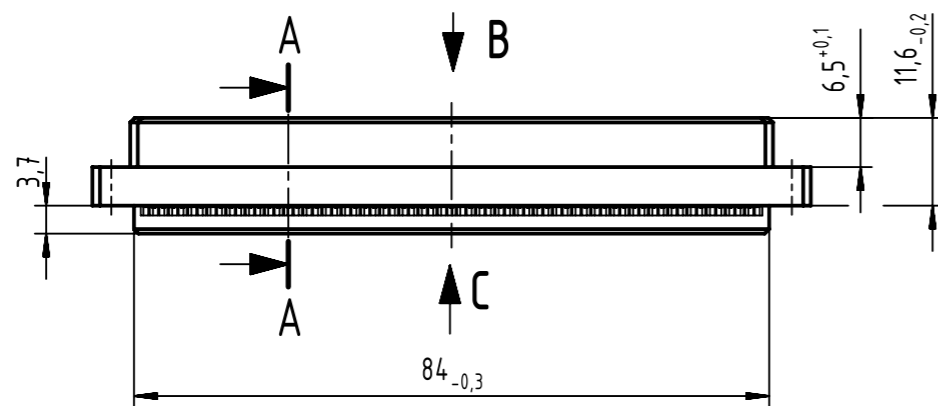
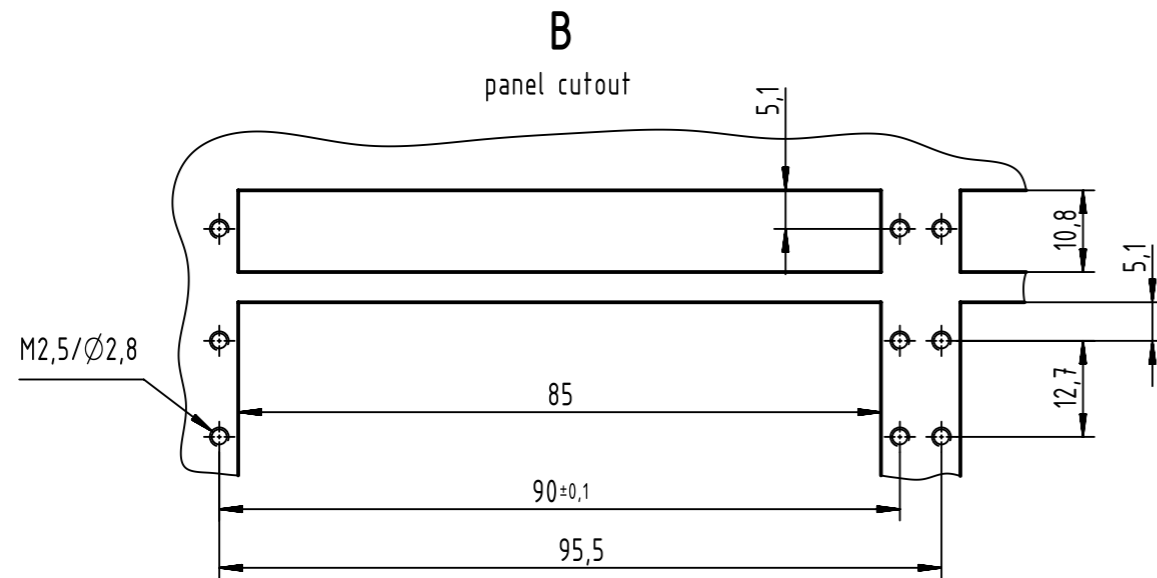
■ = position with contact

□ = position without contact

A-A (2:1)



flat cable AWG 28/7
pitch 1,27mm
(is not in scope of delivery)



lead number 1 of flat cable on contact 1c

1 further information see: DS 09032000601

09 03 264 7828	3
09 03 264 6828	2
part no.	performance level 1

	All Dimensions in mm Original Size DIN A3	Scale 1:1	Free size tol. IEC 60603-2	Ref. Sub. TB 09 03 264 x828 / Mod. 36419 / 03.08.2011		
	All rights reserved Department EC PD - DE	Created by STORCK	Inspected by LEHNERT	Standardisation KOHLER	Date 2015-05-06	State Final Release
HARTING Electronics GmbH D-32339 Espelkamp		Title DIN signal type C female for insulation displacement			Doc-Key / ECM-Nr. 100177370/UGD/003/B 50000088551	
		Type TB	Number 0903264X828		Rev. B	Page 1/1